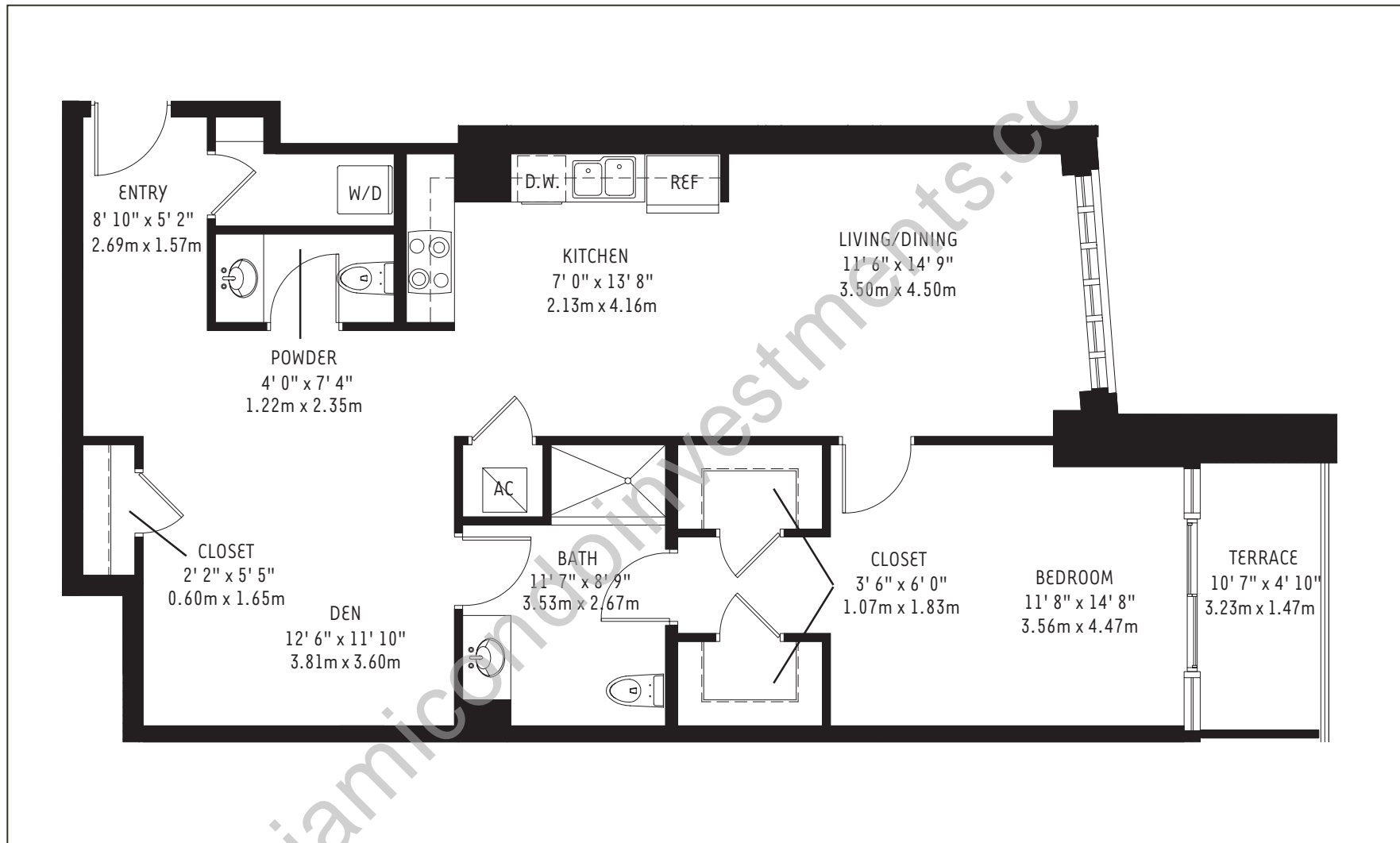


# THE MEWS AT 4 MIDTOWN - UNIT F 1



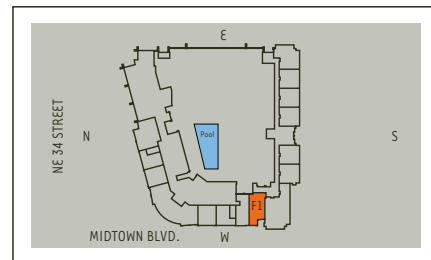
4 Midtown



## The Mews at 4 Midtown Unit F 1 (L0208)

**2 Bedroom / Den / 1-1/2 Bath**

Residence	1075 sq. ft.	100 m <sup>2</sup>
Terrace	66 sq. ft.	6 m <sup>2</sup>
<b>TOTAL</b>	<b>1141 sq. ft.</b>	<b>106 m<sup>2</sup></b>



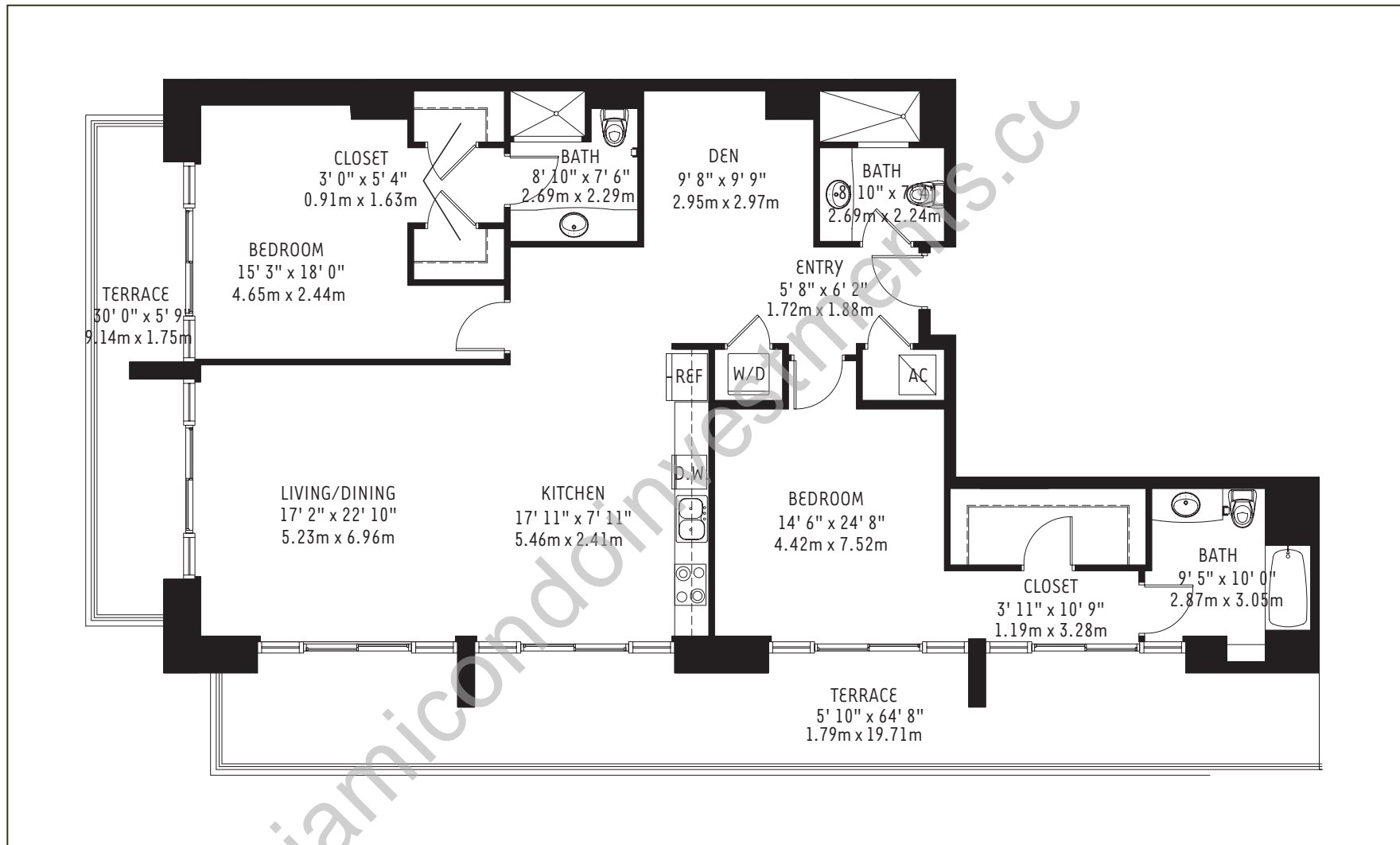
There are various methods for calculating the square footage of a condominium unit and depending upon the method of calculation, the quoted square footage of a condominium unit may vary. The square footages of the Unit shown herein are based upon the "Architectural Method" of measurement and stated dimensions are measured to the exterior boundaries of the exterior walls and the centerline of interior demising walls and in fact vary from the dimensions that would be determined by using the description and boundaries of the Unit set forth in the Declaration (which only includes the interior airspace between the perimeter walls and excludes interior structural components). Accordingly, the square footages stated herein are greater than those which would be derived by measuring only the interior area space for the Unit as the Unit is described in the Declaration. Seller does not make, and specifically disclaims, any representation or warranty as to the actual size, dimensions or square footage of the Unit. Purchaser should refer to the description and boundaries of the Unit set forth in the recorded Declaration and make its own determination as to the area and dimensions of the Unit. These drawings are conceptual only and are for the convenience of reference.

ORAL REPRESENTATIONS CANNOT BE RELIED UPON AS CORRECTLY STATING REPRESENTATIONS OF THE DEVELOPER. FOR CORRECT REPRESENTATIONS, MAKE REFERENCE TO THIS BROCHURE AND TO THE DOCUMENTS REQUIRED BY SECTION 718.503, FLORIDA STATUTES, TO BE FURNISHED BY A DEVELOPER TO A BUYER OR LESSEE.

# THE MEWS AT 4 MIDTOWN - UNIT F 6



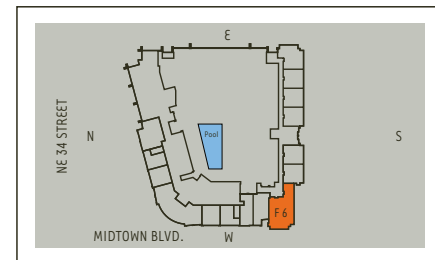
4 Midtown



## The Mews at 4 Midtown Unit F 6 (L0207, L0307)

**2 Bedroom / Den / 3 Bath**

Residence	1767 sq. ft.	164 m <sup>2</sup>
Terrace	568 sq. ft.	53 m <sup>2</sup>
<b>TOTAL</b>	<b>2335 sq. ft.</b>	<b>217 m<sup>2</sup></b>



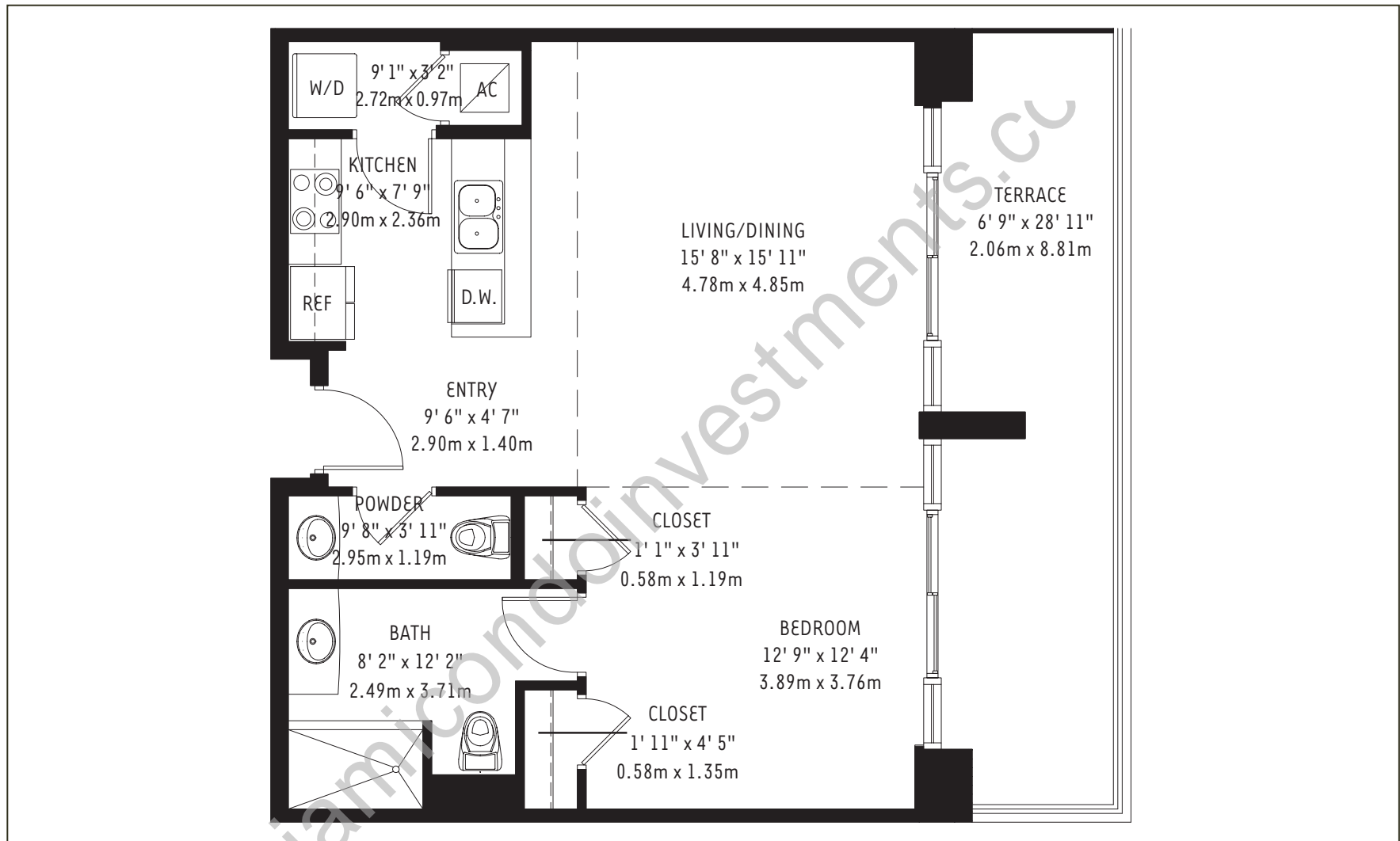
There are various methods for calculating the square footage of a condominium unit and depending upon the method of calculation, the quoted square footage of a condominium unit may vary. The square footages of the Unit shown herein are based upon the "Architectural Method" of measurement and stated dimensions are measured to the exterior boundaries of the exterior walls and the centerline of interior demising walls and in fact vary from the dimensions that would be determined by using the description and boundaries of the Unit set forth in the Declaration (which only includes the interior airspace between the perimeter walls and excludes interior structural components). Accordingly, the square footages stated herein are greater than those which would be derived by measuring only the interior area space for the Unit as the Unit is described in the Declaration. Seller does not make, and specifically disclaims, any representation or warranty as to the actual size, dimensions or square footage of the Unit. Purchaser should refer to the description and boundaries of the Unit set forth in the recorded Declaration and make its own determination as to the area and dimensions of the Unit. These drawings are conceptual only and are for the convenience of reference.

ORAL REPRESENTATIONS CANNOT BE RELIED UPON AS CORRECTLY STATING REPRESENTATIONS OF THE DEVELOPER. FOR CORRECT REPRESENTATIONS, MAKE REFERENCE TO THIS BROCHURE AND TO THE DOCUMENTS REQUIRED BY SECTION 718.503, FLORIDA STATUTES, TO BE FURNISHED BY A DEVELOPER TO A BUYER OR LESSEE.

# THE MEWS AT 4 MIDTOWN - UNIT F 7

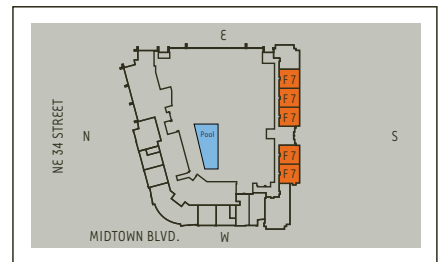


4 Midtown



## The Mews at 4 Midtown Unit F7 (L0203, L0204, L0205, L0206, L0302, L0304, L0305) 1 Bedroom / 1-1/2 Bath

Residence	767 sq. ft.	71 m <sup>2</sup>
Terrace	207 sq. ft.	19 m <sup>2</sup>
<b>TOTAL</b>	<b>974 sq. ft.</b>	<b>90 m<sup>2</sup></b>



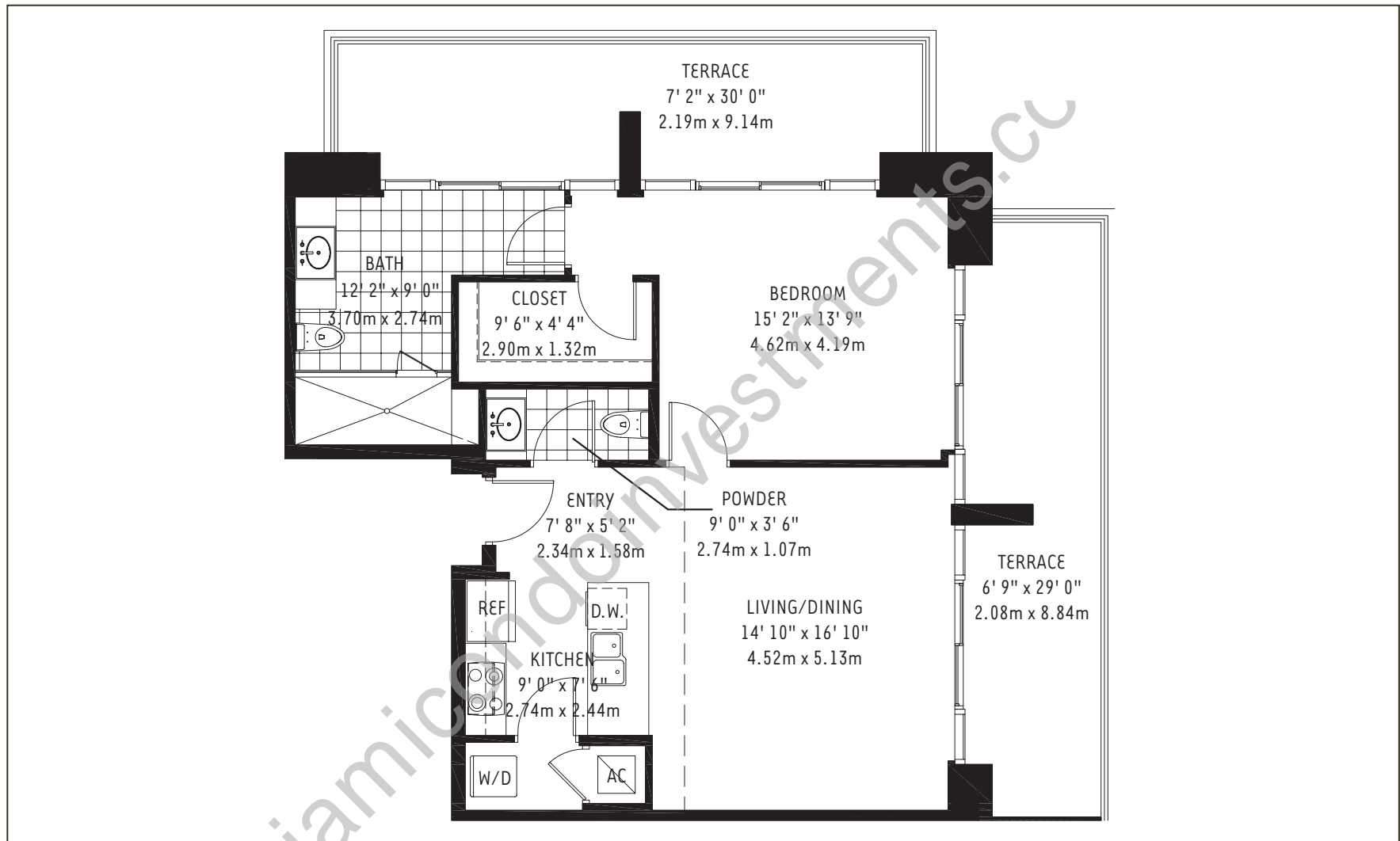
There are various methods for calculating the square footage of a condominium unit and depending upon the method of calculation, the quoted square footage of a condominium unit may vary. The square footages of the Unit shown herein are based upon the "Architectural Method" of measurement and stated dimensions are measured to the exterior boundaries of the exterior walls and the centerline of interior demising walls and in fact vary from the dimensions that would be determined by using the description and boundaries of the Unit set forth in the Declaration (which only includes the interior airspace between the perimeter walls and excludes interior structural components). Accordingly, the square footages stated herein are greater than those which would be derived by measuring only the interior area space for the Unit as the Unit is described in the Declaration. Seller does not make, and specifically disclaims, any representation or warranty as to the actual size, dimensions or square footage of the Unit. Purchaser should refer to the description and boundaries of the Unit set forth in the recorded Declaration and make its own determination as to the area and dimensions of the Unit. These drawings are conceptual only and are for the convenience of reference.

ORAL REPRESENTATIONS CANNOT BE RELIED UPON AS CORRECTLY STATING REPRESENTATIONS OF THE DEVELOPER. FOR CORRECT REPRESENTATIONS, MAKE REFERENCE TO THIS BROCHURE AND TO THE DOCUMENTS REQUIRED BY SECTION 718.503, FLORIDA STATUTES, TO BE FURNISHED BY A DEVELOPER TO A BUYER OR LESSEE.

# THE MEWS AT 4 MIDTOWN - UNIT F 8



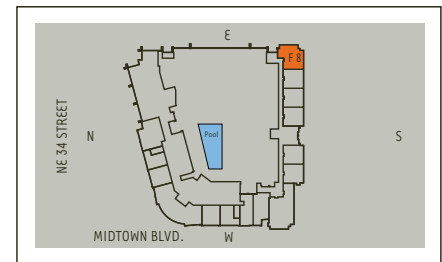
4 Midtown



## The Mews at 4 Midtown Unit F 8 (L0301)

1 Bedroom / 1-1/2 Bath

Residence	935 sq. ft.	87 m <sup>2</sup>
Terrace	440 sq. ft.	41 m <sup>2</sup>
<b>TOTAL</b>	<b>1375 sq. ft.</b>	<b>128 m<sup>2</sup></b>



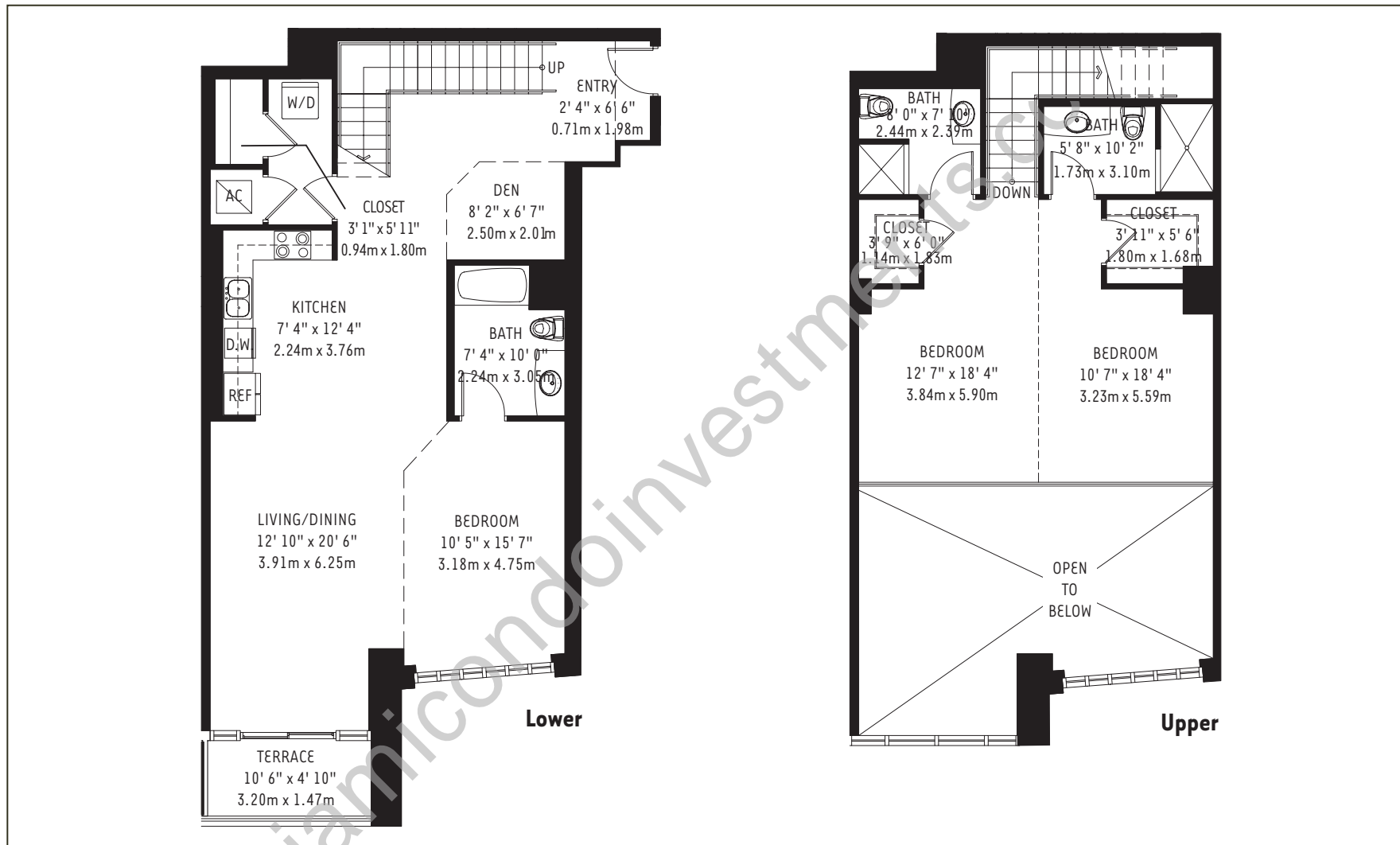
There are various methods for calculating the square footage of a condominium unit and depending upon the method of calculation, the quoted square footage of a condominium unit may vary. The square footages of the Unit shown herein are based upon the "Architectural Method" of measurement and stated dimensions are measured to the exterior boundaries of the exterior walls and the centerline of interior demising walls and in fact vary from the dimensions that would be determined by using the description and boundaries of the Unit set forth in the Declaration (which only includes the interior airspace between the perimeter walls and excludes interior structural components). Accordingly, the square footages stated herein are greater than those which would be derived by measuring only the interior area space for the Unit as the Unit is described in the Declaration. Seller does not make, and specifically disclaims, any representation or warranty as to the actual size, dimensions or square footage of the Unit. Purchaser should refer to the description and boundaries of the Unit set forth in the recorded Declaration and make its own determination as to the area and dimensions of the Unit. These drawings are conceptual only and are for the convenience of reference.

ORAL REPRESENTATIONS CANNOT BE RELIED UPON AS CORRECTLY STATING REPRESENTATIONS OF THE DEVELOPER. FOR CORRECT REPRESENTATIONS, MAKE REFERENCE TO THIS BROCHURE AND TO THE DOCUMENTS REQUIRED BY SECTION 718.503, FLORIDA STATUTES, TO BE FURNISHED BY A DEVELOPER TO A BUYER OR LESSEE.

# THE MEWS AT 4 MIDTOWN - UNIT L 1



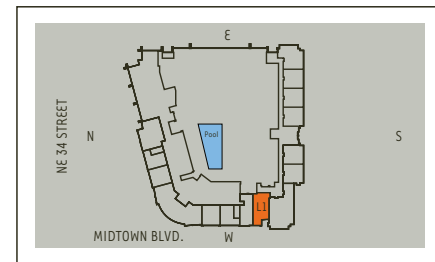
4 Midtown



## The Mews at 4 Midtown Unit L 1 (L0308)

**3 Bedroom / Den / 3 Bath**

Lower	1089 sq. ft.	101 m <sup>2</sup>
Upper	648 sq. ft.	60 m <sup>2</sup>
<b>Residence Total</b>	<b>1737 sq. ft.</b>	<b>161 m<sup>2</sup></b>
<b>Terrace</b>	<b>67 sq. ft.</b>	<b>6 m<sup>2</sup></b>
<b>TOTAL</b>	<b>1804 sq. ft.</b>	<b>167 m<sup>2</sup></b>



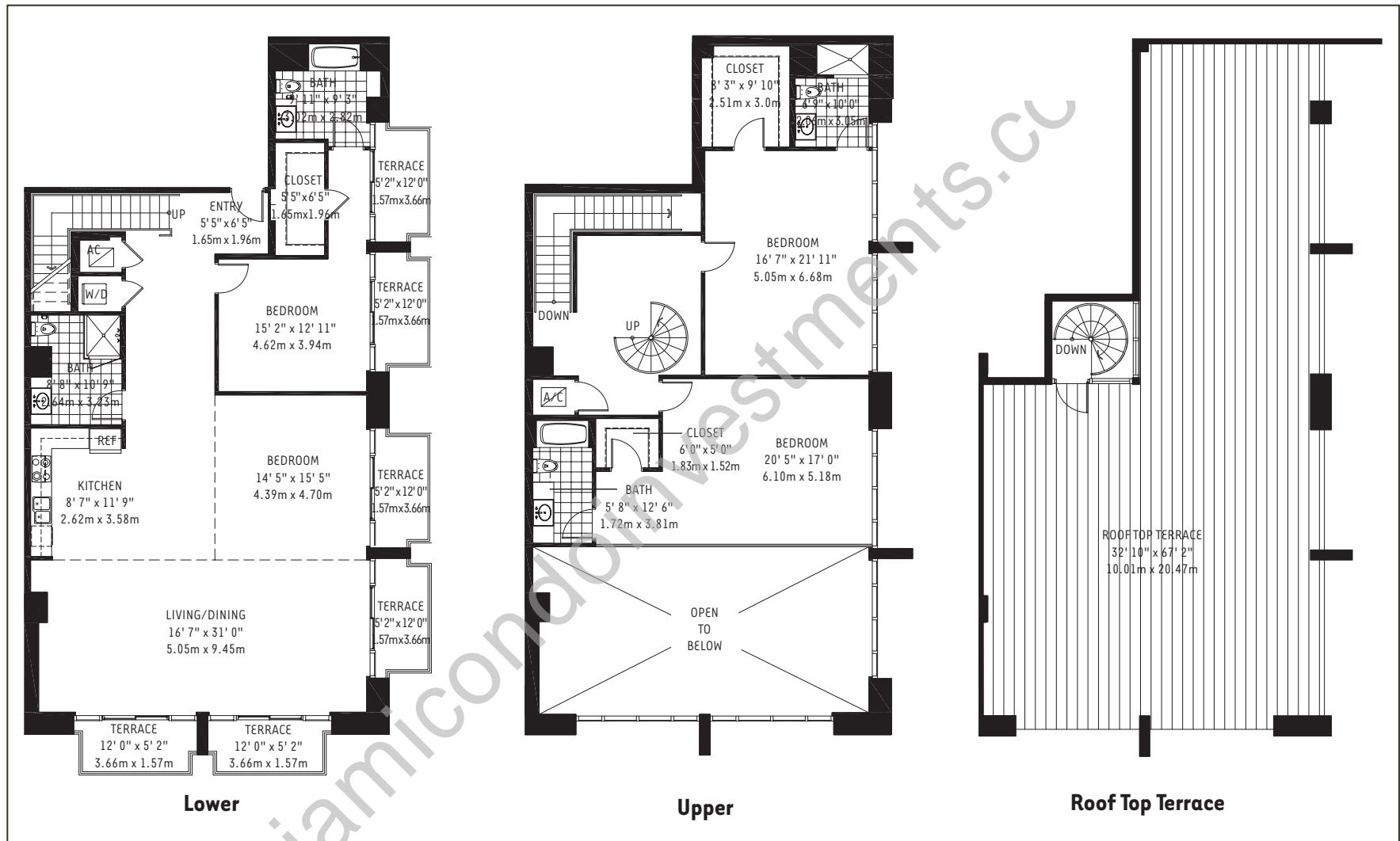
There are various methods for calculating the square footage of a condominium unit and depending upon the method of calculation, the quoted square footage of a condominium unit may vary. The square footages of the Unit shown herein are based upon the "Architectural Method" of measurement and stated dimensions are measured to the exterior boundaries of the exterior walls and the centerline of interior demising walls and in fact vary from the dimensions that would be determined by using the description and boundaries of the Unit set forth in the Declaration (which only includes the interior airspace between the perimeter walls and excludes interior structural components). Accordingly, the square footages stated herein are greater than those which would be derived by measuring only the interior area space for the Unit as the Unit is described in the Declaration. Seller does not make, and specifically disclaims, any representation or warranty as to the actual size, dimensions or square footage of the Unit. Purchaser should refer to the description and boundaries of the Unit set forth in the recorded Declaration and make its own determination as to the area and dimensions of the Unit. These drawings are conceptual only and are for the convenience of reference.

ORAL REPRESENTATIONS CANNOT BE RELIED UPON AS CORRECTLY STATING REPRESENTATIONS OF THE DEVELOPER. FOR CORRECT REPRESENTATIONS, MAKE REFERENCE TO THIS BROCHURE AND TO THE DOCUMENTS REQUIRED BY SECTION 718.503, FLORIDA STATUTES, TO BE FURNISHED BY A DEVELOPER TO A BUYER OR LESSEE.

# THE MEWS AT 4 MIDTOWN - UNIT L 10



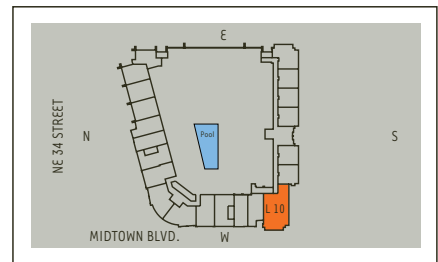
4 Midtown



## The Mews at 4 Midtown Unit L 10 (L04PH7)

**4 Bedroom / 4 Bath / Roof Top Terrace**

Lower	1930 sq. ft.	179 m <sup>2</sup>
Upper	1409 sq. ft.	131 m <sup>2</sup>
<b>Residence Total</b>	<b>3339 sq. ft.</b>	<b>310 m<sup>2</sup></b>
<b>Terrace</b>	<b>470 sq. ft.</b>	<b>44 m<sup>2</sup></b>
<b>Roof Top Terrace</b>	<b>1855 sq. ft.</b>	<b>172 m<sup>2</sup></b>
<b>TOTAL</b>	<b>5664 sq. ft.</b>	<b>526 m<sup>2</sup></b>



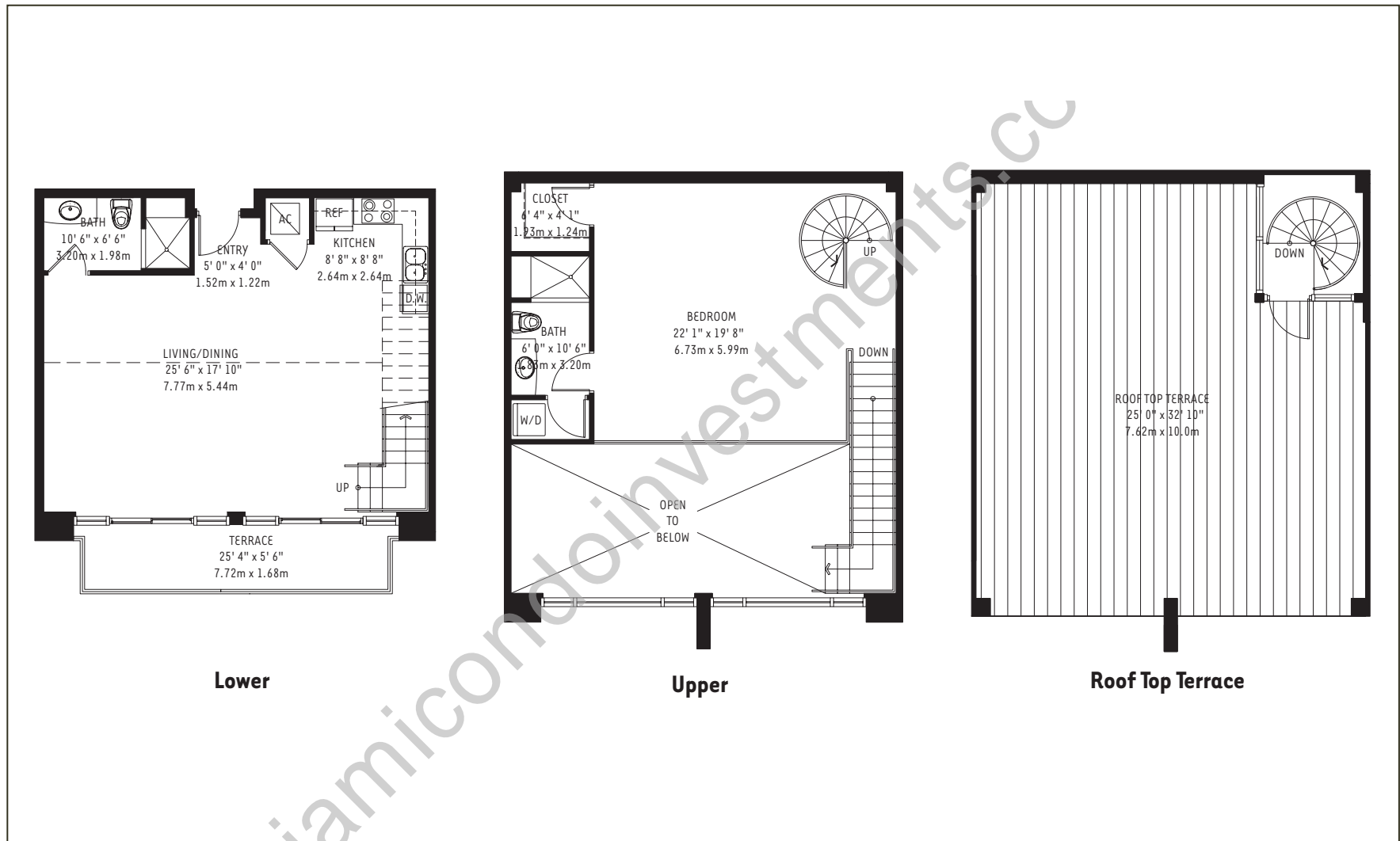
There are various methods for calculating the square footage of a condominium unit and depending upon the method of calculation, the quoted square footage of a condominium unit may vary. The square footages of the Unit shown herein are based upon the "Architectural Method" of measurement and stated dimensions are measured to the exterior boundaries of the exterior walls and the centerline of interior demising walls and in fact vary from the dimensions that would be determined by using the description and boundaries of the Unit set forth in the Declaration (which only includes the interior airspace between the perimeter walls and excludes interior structural components). Accordingly, the square footages stated herein are greater than those which would be derived by measuring only the interior area space for the Unit as the Unit is described in the Declaration. Seller does not make, and specifically disclaims, any representation or warranty as to the actual size, dimensions or square footage of the Unit. Purchaser should refer to the description and boundaries of the Unit set forth in the recorded Declaration and make its own determination as to the area and dimensions of the Unit. These drawings are conceptual only and are for the convenience of reference.

ORAL REPRESENTATIONS CANNOT BE RELIED UPON AS CORRECTLY STATING REPRESENTATIONS OF THE DEVELOPER. FOR CORRECT REPRESENTATIONS, MAKE REFERENCE TO THIS BROCHURE AND TO THE DOCUMENTS REQUIRED BY SECTION 718.503, FLORIDA STATUTES, TO BE FURNISHED BY A DEVELOPER TO A BUYER OR LESSEE.

# THE MEWS AT 4 MIDTOWN - UNIT L 11



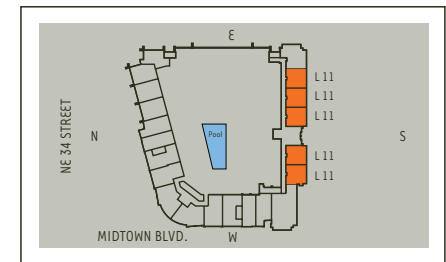
4 Midtown



## The Mews at 4 Midtown Unit L 11 (L04PH2 to L04PH6)

**1 Bedroom / 2 Bath / Roof Top Terrace**

Lower	769 sq. ft.	71 m <sup>2</sup>
Upper	586 sq. ft.	54 m <sup>2</sup>
<b>Residence Total</b>	<b>1355 sq. ft.</b>	<b>126 m<sup>2</sup></b>
<b>Terrace</b>	<b>156 sq. ft.</b>	<b>14 m<sup>2</sup></b>
<b>Roof Top Terrace</b>	<b>850 sq. ft.</b>	<b>79 m<sup>2</sup></b>
<b>TOTAL</b>	<b>2361 sq. ft.</b>	<b>219 m<sup>2</sup></b>



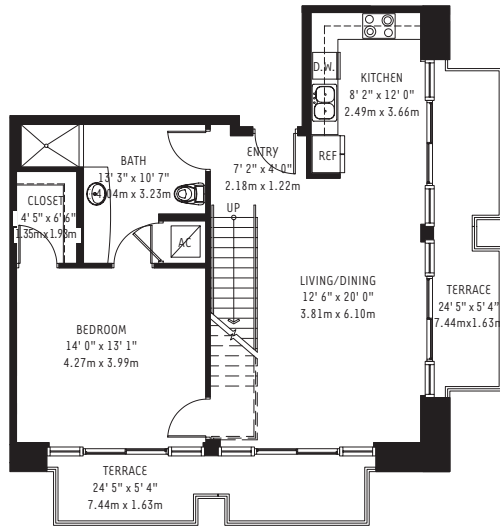
There are various methods for calculating the square footage of a condominium unit and depending upon the method of calculation, the quoted square footage of a condominium unit may vary. The square footages of the Unit shown herein are based upon the "Architectural Method" of measurement and stated dimensions are measured to the exterior boundaries of the exterior walls and the centerline of interior demising walls and in fact vary from the dimensions that would be determined by using the description and boundaries of the Unit set forth in the Declaration (which only includes the interior airspace between the perimeter walls and excludes interior structural components). Accordingly, the square footages stated herein are greater than those which would be derived by measuring only the interior area space for the Unit as the Unit is described in the Declaration. Seller does not make, and specifically disclaims, any representation or warranty as to the actual size, dimensions or square footage of the Unit. Purchaser should refer to the description and boundaries of the Unit set forth in the recorded Declaration and make its own determination as to the area and dimensions of the Unit. These drawings are conceptual only and are for the convenience of reference.

ORAL REPRESENTATIONS CANNOT BE RELIED UPON AS CORRECTLY STATING REPRESENTATIONS OF THE DEVELOPER. FOR CORRECT REPRESENTATIONS, MAKE REFERENCE TO THIS BROCHURE AND TO THE DOCUMENTS REQUIRED BY SECTION 718.503, FLORIDA STATUTES, TO BE FURNISHED BY A DEVELOPER TO A BUYER OR LESSEE.

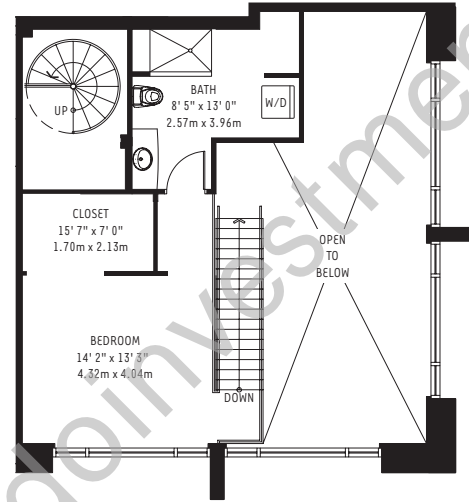
# THE MEWS AT 4 MIDTOWN - UNIT L 12



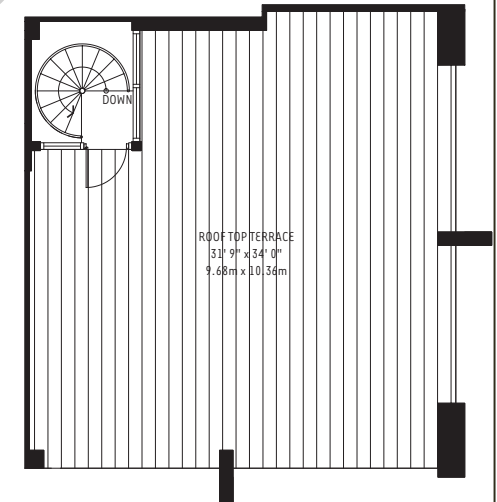
4 Midtown



Lower



Upper

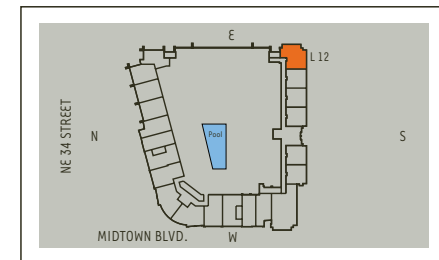


Roof Top Terrace

## The Mews at 4 Midtown Unit L 12 (L04PH1)

2 Bedroom / 2 Bath / Roof Top Terrace

Lower	891 sq. ft.	83 m <sup>2</sup>
Upper	577 sq. ft.	54 m <sup>2</sup>
<b>Residence Total</b>	<b>1468 sq. ft.</b>	<b>137 m<sup>2</sup></b>
<b>Terrace</b>	<b>313 sq. ft.</b>	<b>29 m<sup>2</sup></b>
<b>Roof Top Terrace</b>	<b>1070 sq. ft.</b>	<b>99 m<sup>2</sup></b>
<b>TOTAL</b>	<b>2851 sq. ft.</b>	<b>265 m<sup>2</sup></b>



There are various methods for calculating the square footage of a condominium unit and depending upon the method of calculation, the quoted square footage of a condominium unit may vary. The square footages of the Unit shown herein are based upon the "Architectural Method" of measurement and stated dimensions are measured to the exterior boundaries of the exterior walls and the centerline of interior demising walls and in fact vary from the dimensions that would be determined by using the description and boundaries of the Unit set forth in the Declaration (which only includes the interior airspace between the perimeter walls and excludes interior structural components). Accordingly, the square footages stated herein are greater than those which would be derived by measuring only the interior area space for the Unit as the Unit is described in the Declaration. Seller does not make, and specifically disclaims, any representation or warranty as to the actual size, dimensions or square footage of the Unit. Purchaser should refer to the description and boundaries of the Unit set forth in the recorded Declaration and make its own determination as to the area and dimensions of the Unit. These drawings are conceptual only and are for the convenience of reference.

ORAL REPRESENTATIONS CANNOT BE RELIED UPON AS CORRECTLY STATING REPRESENTATIONS OF THE DEVELOPER. FOR CORRECT REPRESENTATIONS, MAKE REFERENCE TO THIS BROCHURE AND TO THE DOCUMENTS REQUIRED BY SECTION 718.503, FLORIDA STATUTES, TO BE FURNISHED BY A DEVELOPER TO A BUYER OR LESSEE.