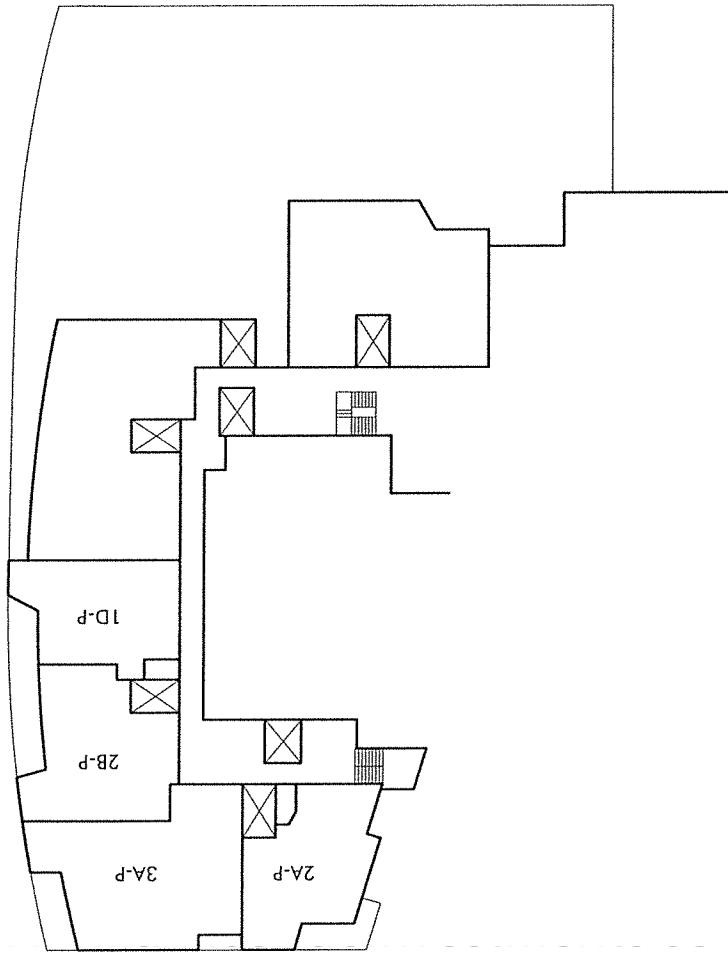
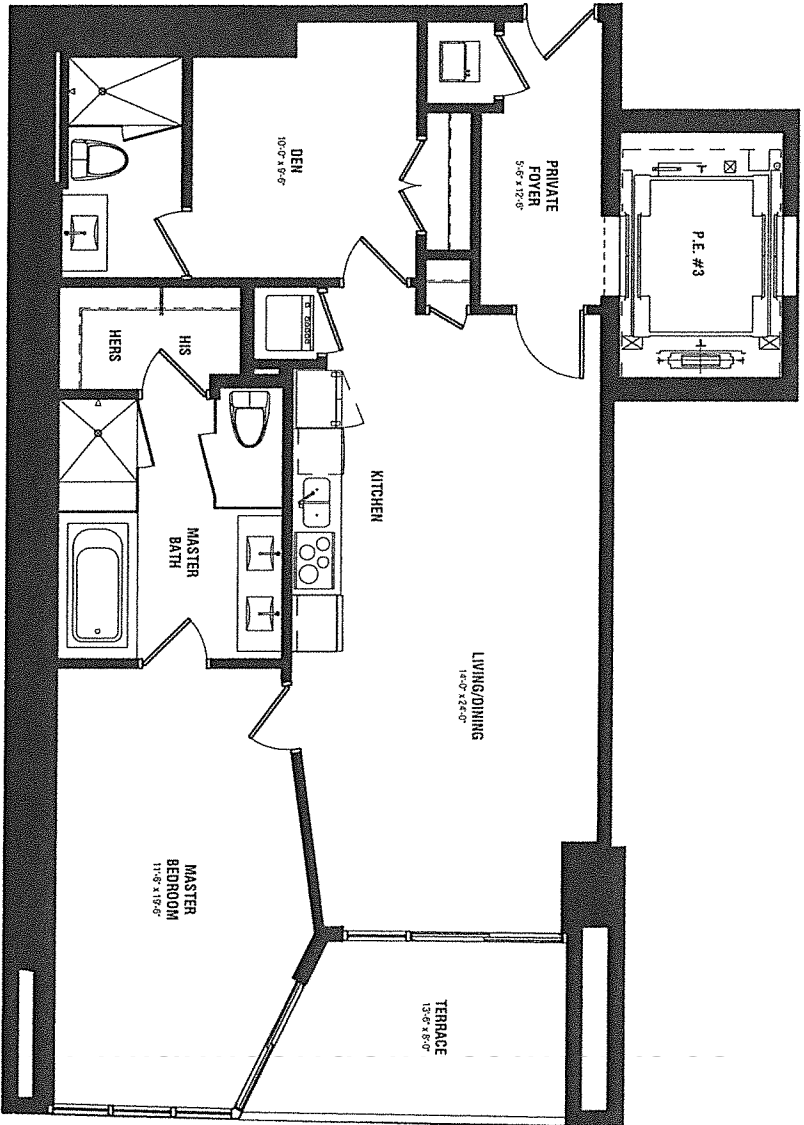
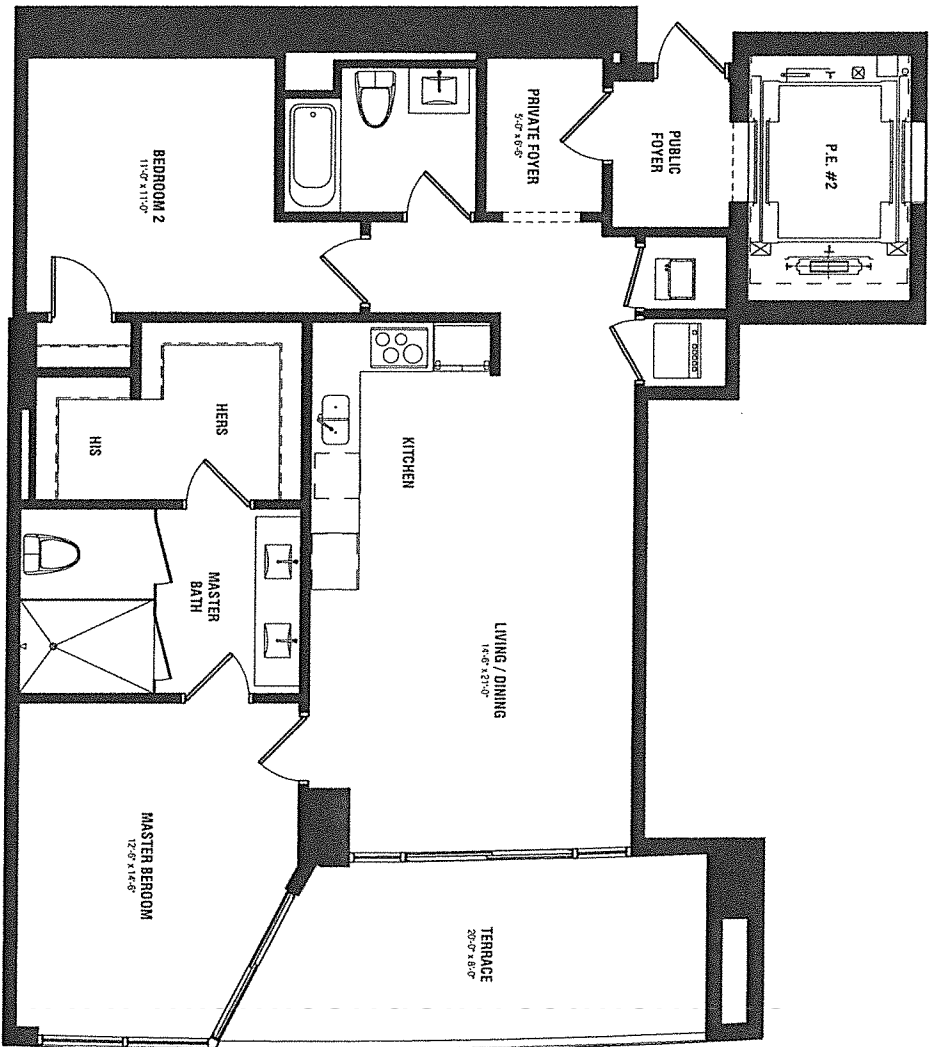


AMENITY UNITS (6)

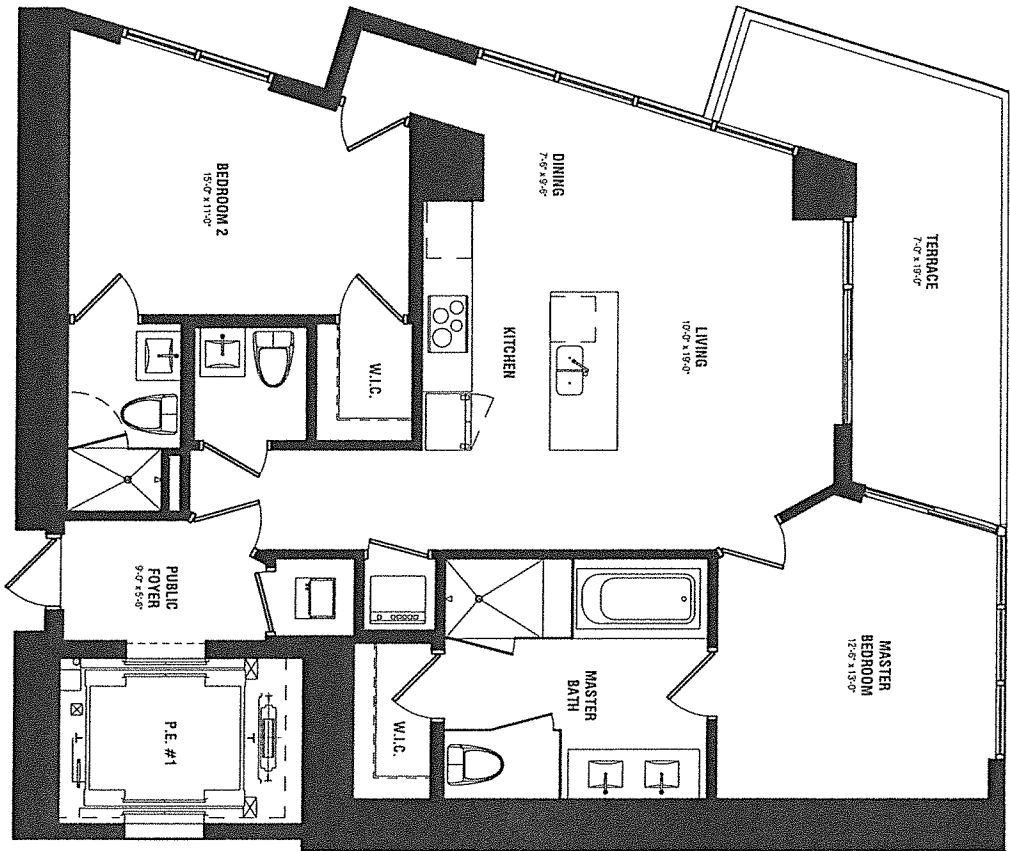




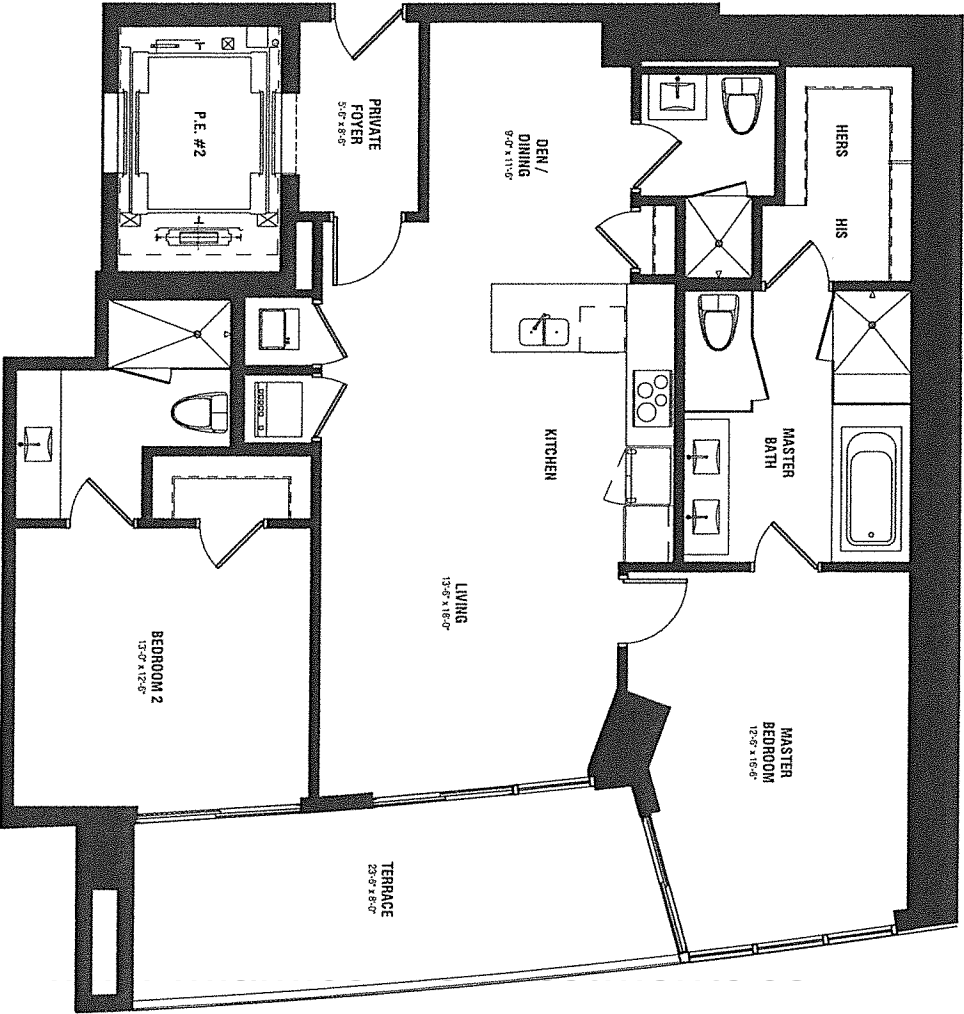
UNIT 1C-P
 AC: 1136 SF - TERRACE: 110 SF - TOTAL: 1246 SF



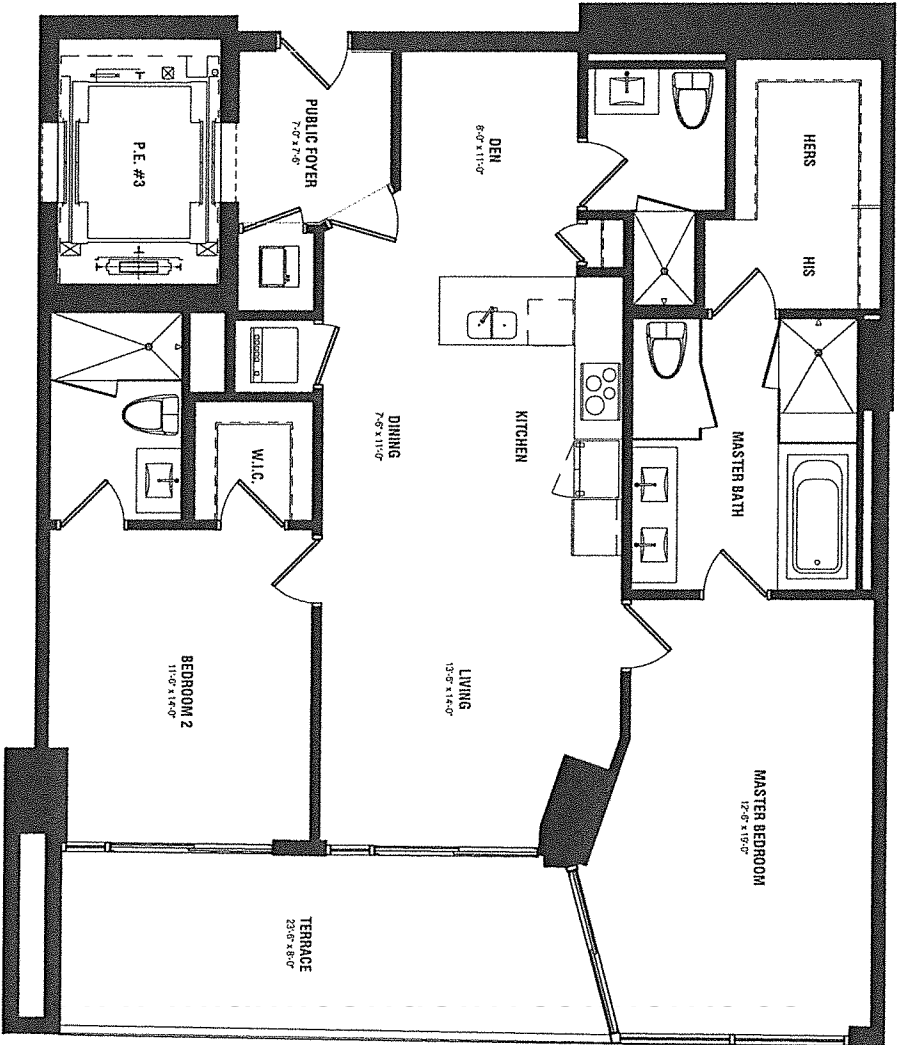
UNIT 1D-P
 AC: 1154 SF · TERRACE: 171 SF · TOTAL: 1325 SF



UNIT 2A-P
 A.C. 1167 SF - TERRACE: 164 SF - TOTAL: 1331 SF

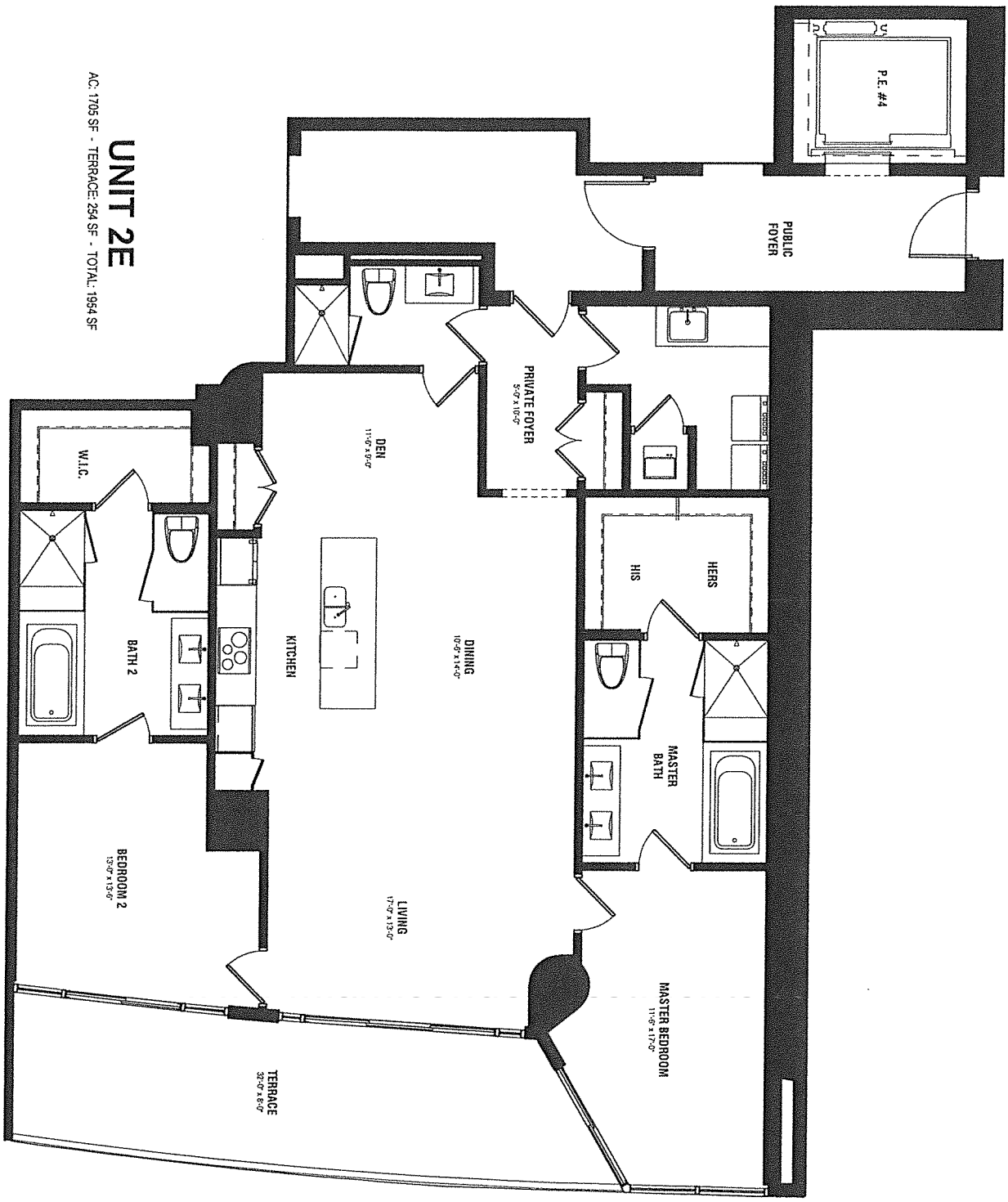


UNIT 2B-P
 AC: 1383 SF - TERRACE: 197 SF - TOTAL: 1580 SF

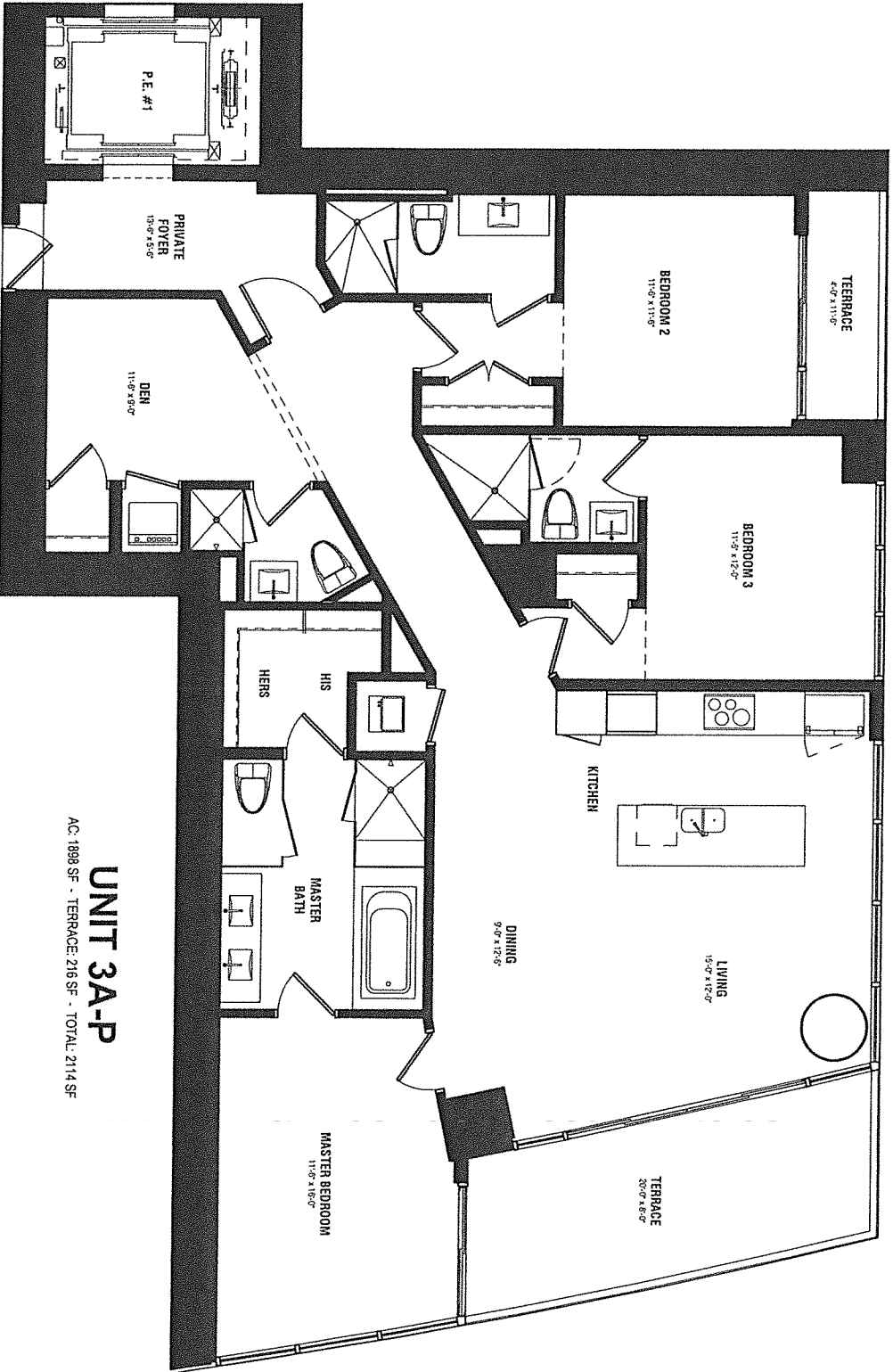


UNIT 2C-P

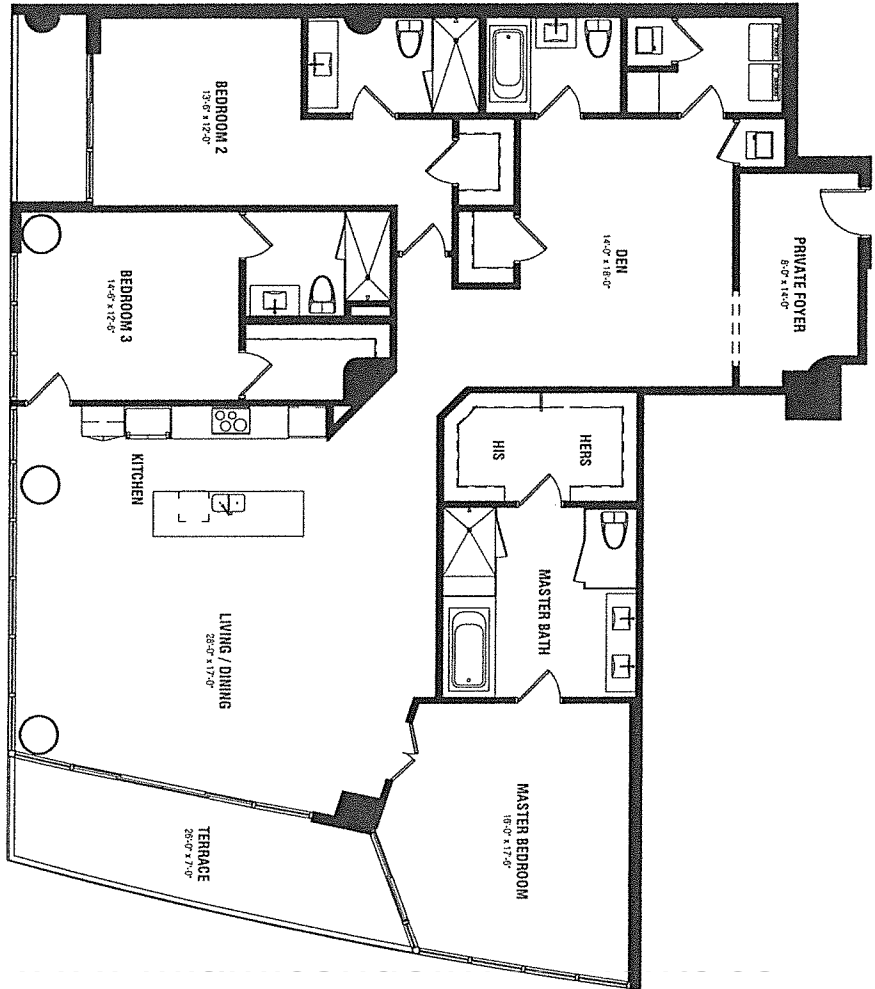
AC: 1328 SF - TERRACE: 198 SF - TOTAL: 1524 SF



UNIT 2E
 A.C. 1705 SF - TERRACE: 254 SF - TOTAL: 1954 SF

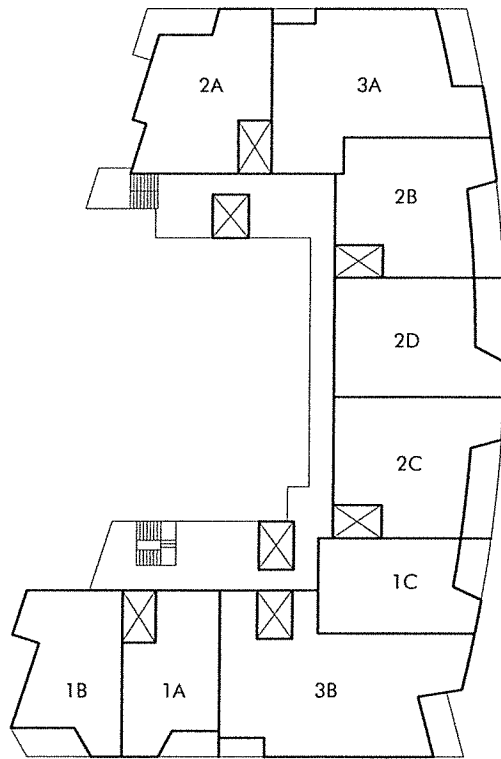


UNIT 3A-P
 A.C. 1898 SF - TERRACE: 216 SF - TOTAL: 2114 SF

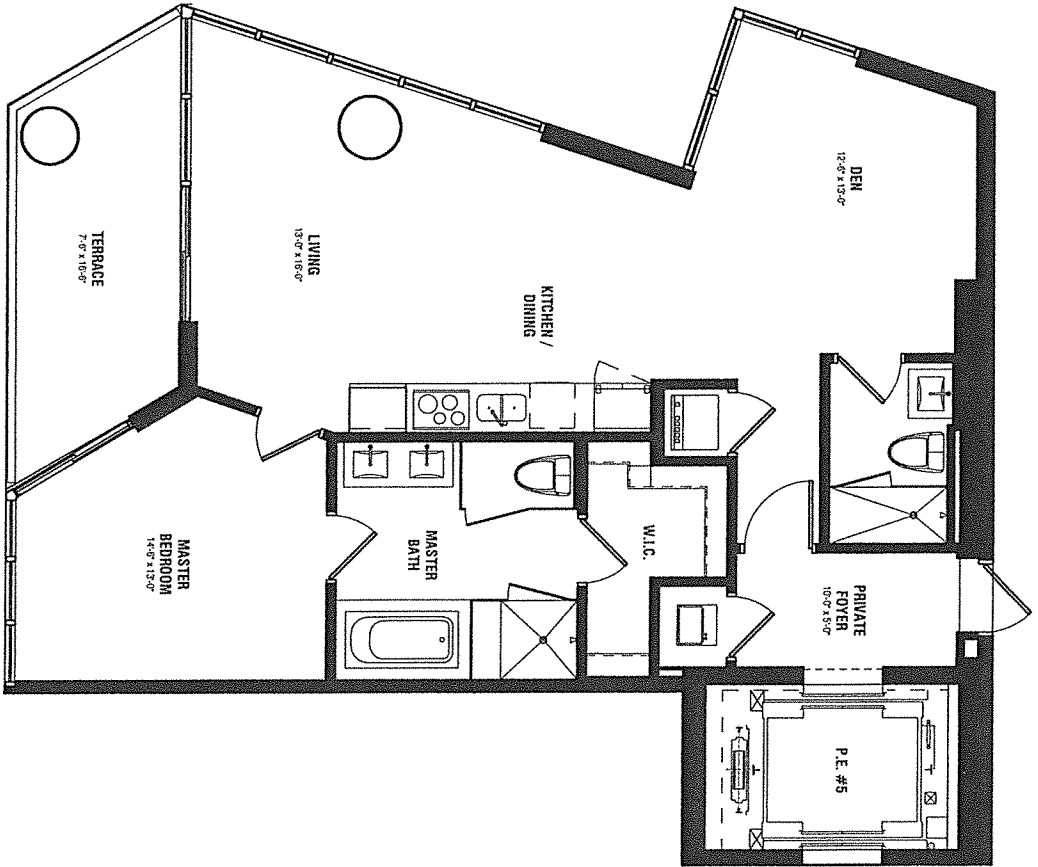


UNIT 3C

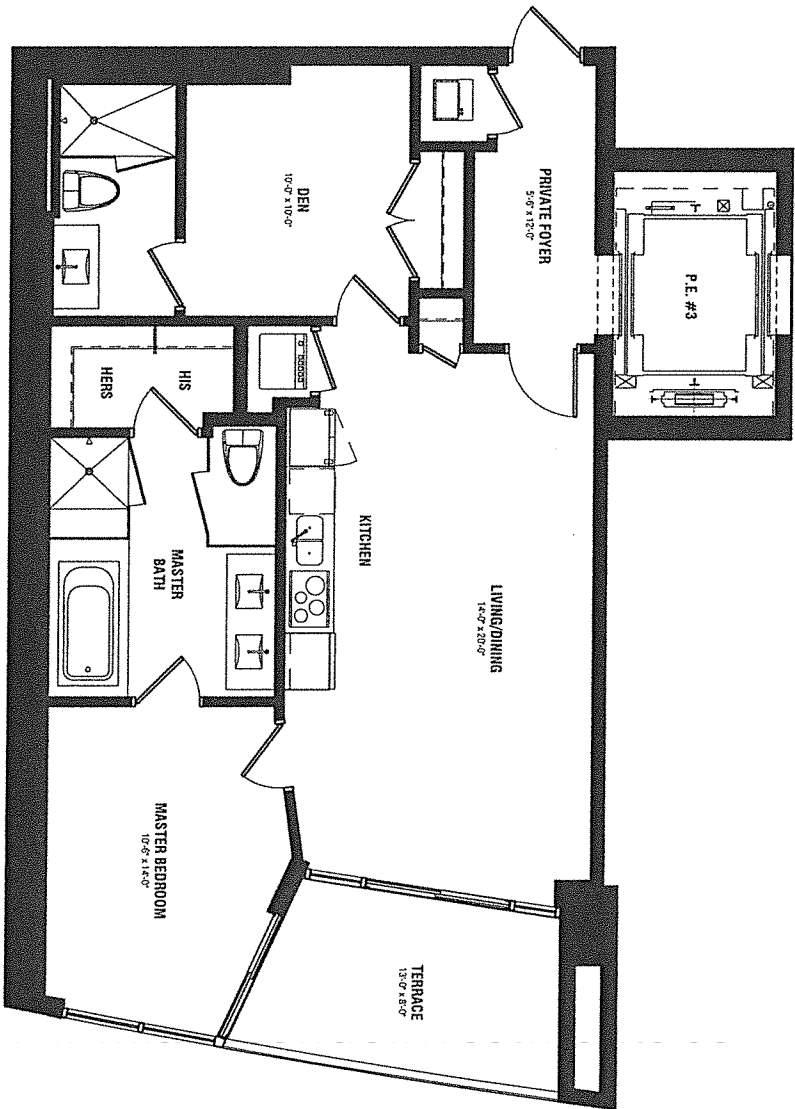
AC: 2643 SF - TERRACE: 249 SF - TOTAL: 2892 SF



TOWER UNITS (7-46)

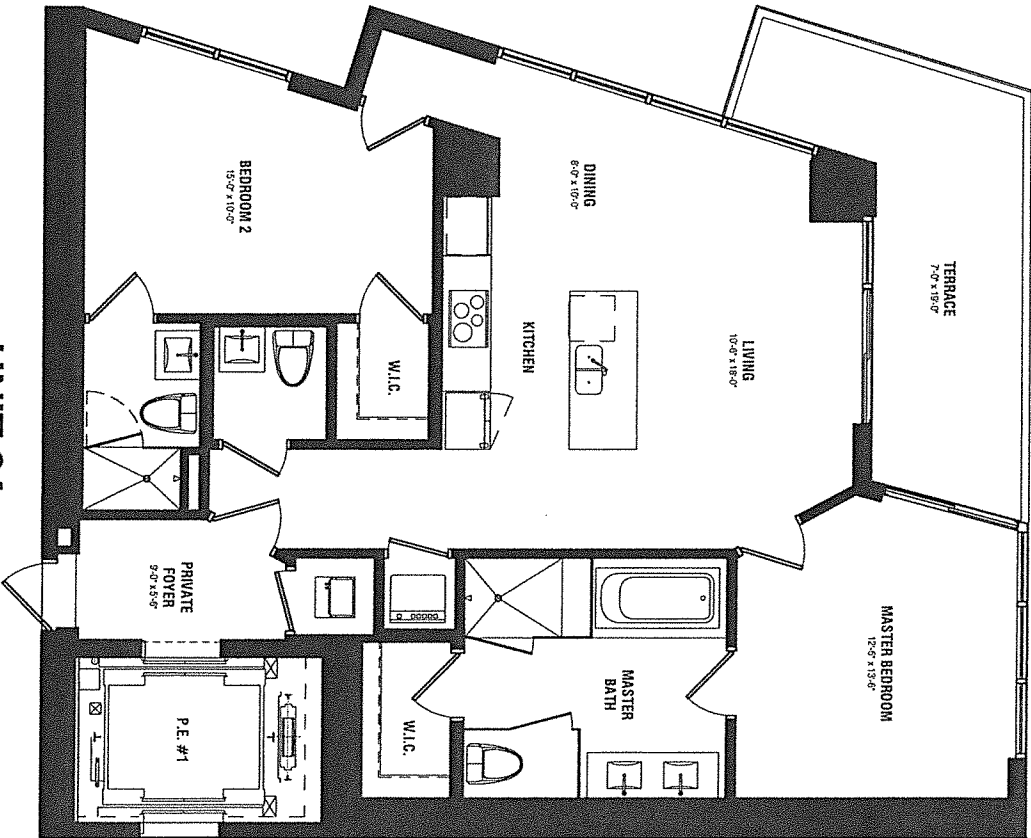


UNIT 1B
 AC. 1097 SF - TERRACE: 117 SF - TOTAL: 1174 SF

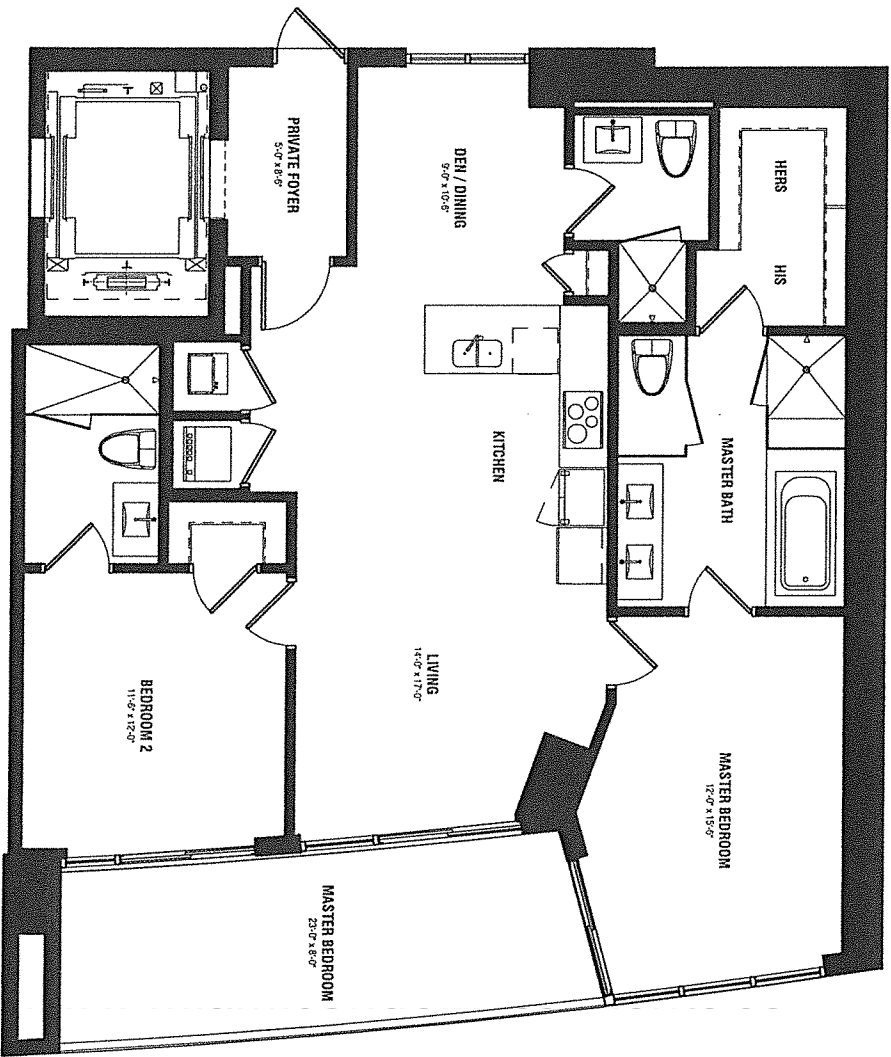


AC: 1014 SF - TERRACE: 120 SF - TOTAL: 1134 SF

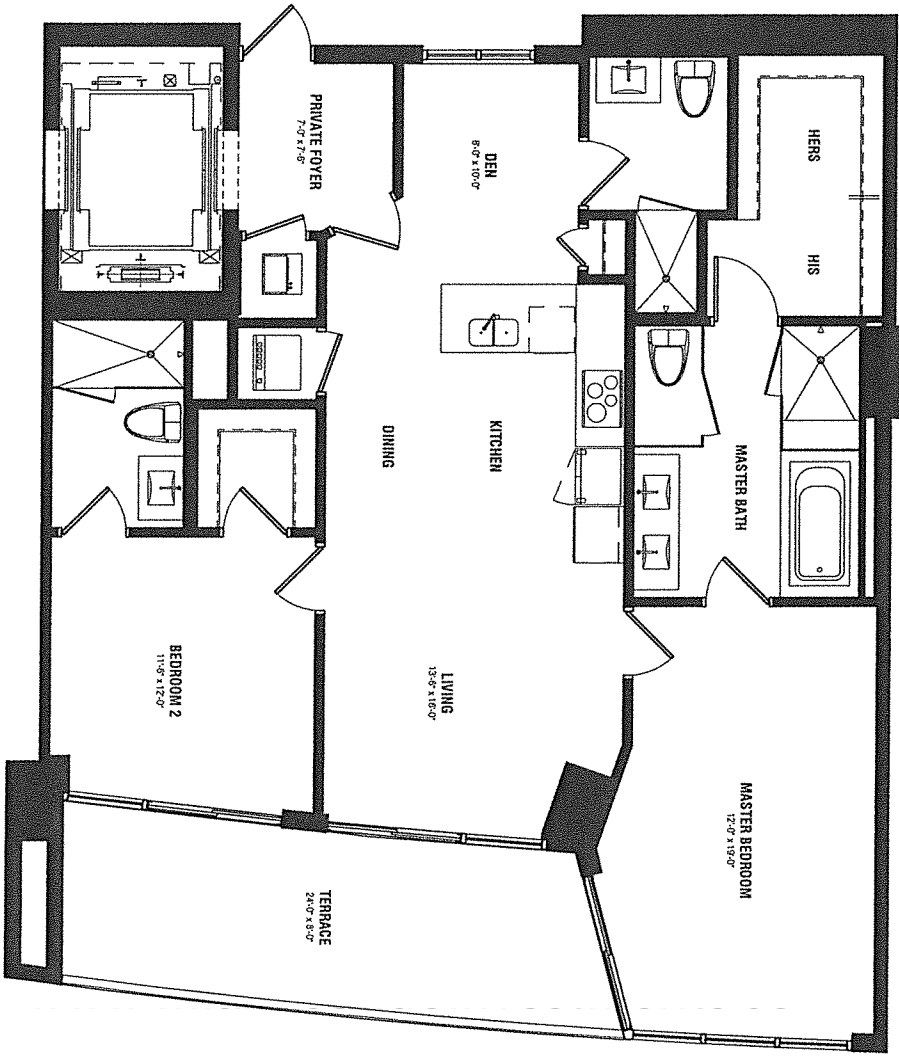
UNIT 1C



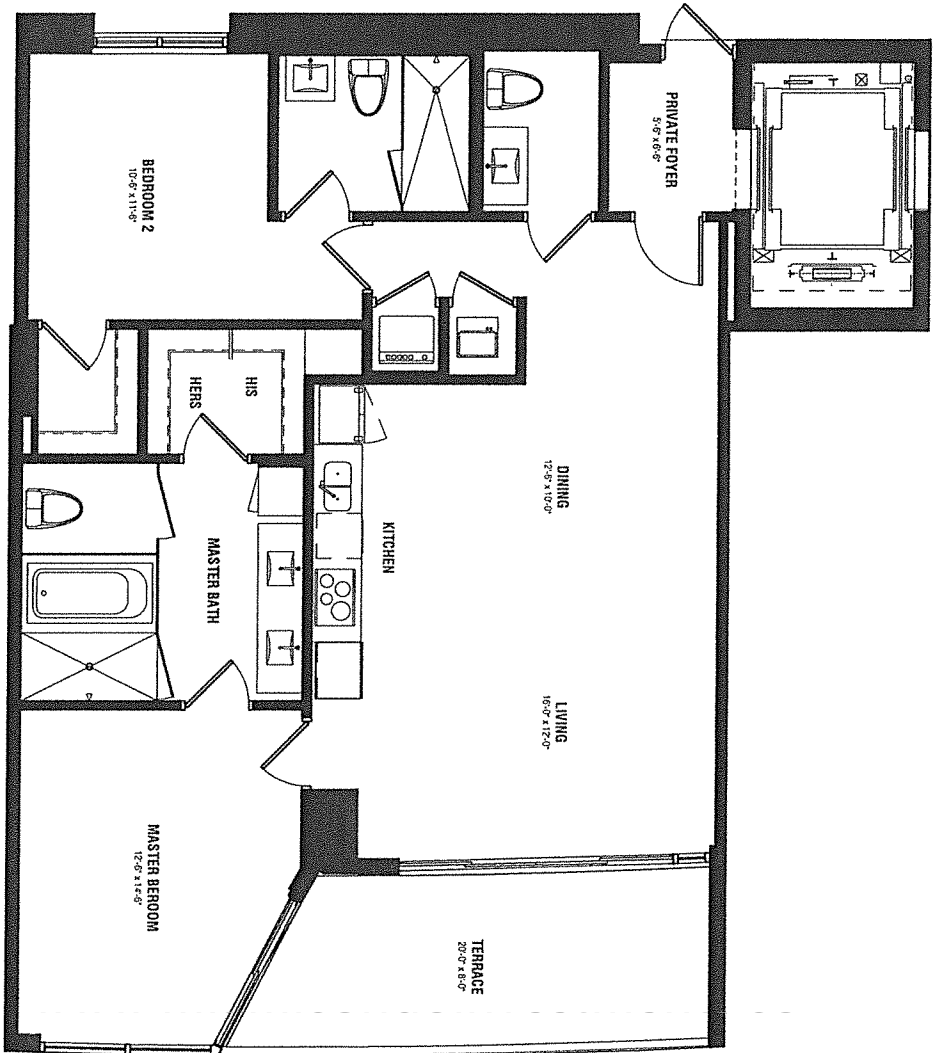
UNIT 2A
 AC: 1229 SF - TERRACE: 164 SF - TOTAL: 1393 SF



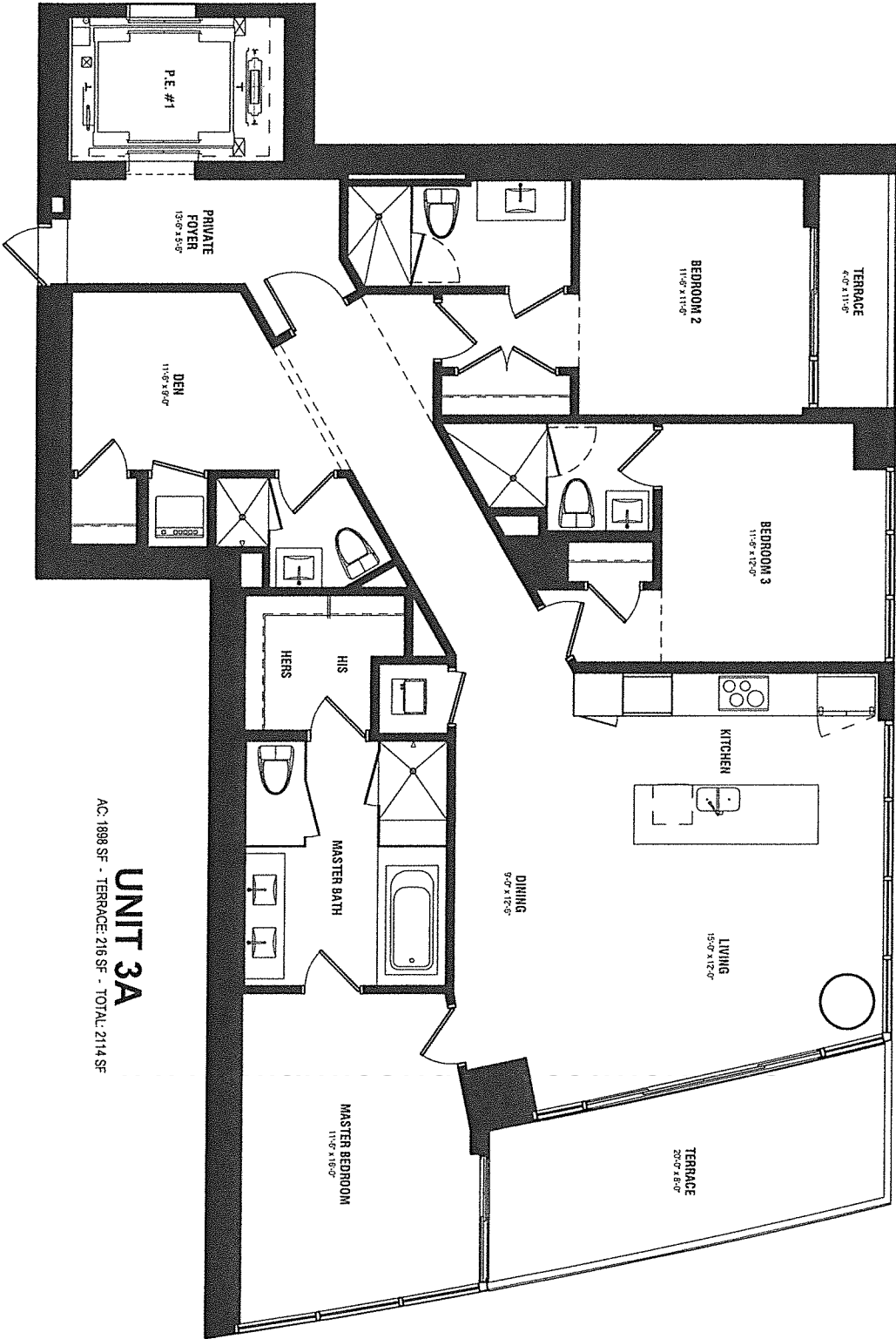
UNIT 2B
 AC: 1279 SF - TERRACE: 196 SF - TOTAL: 1489 SF



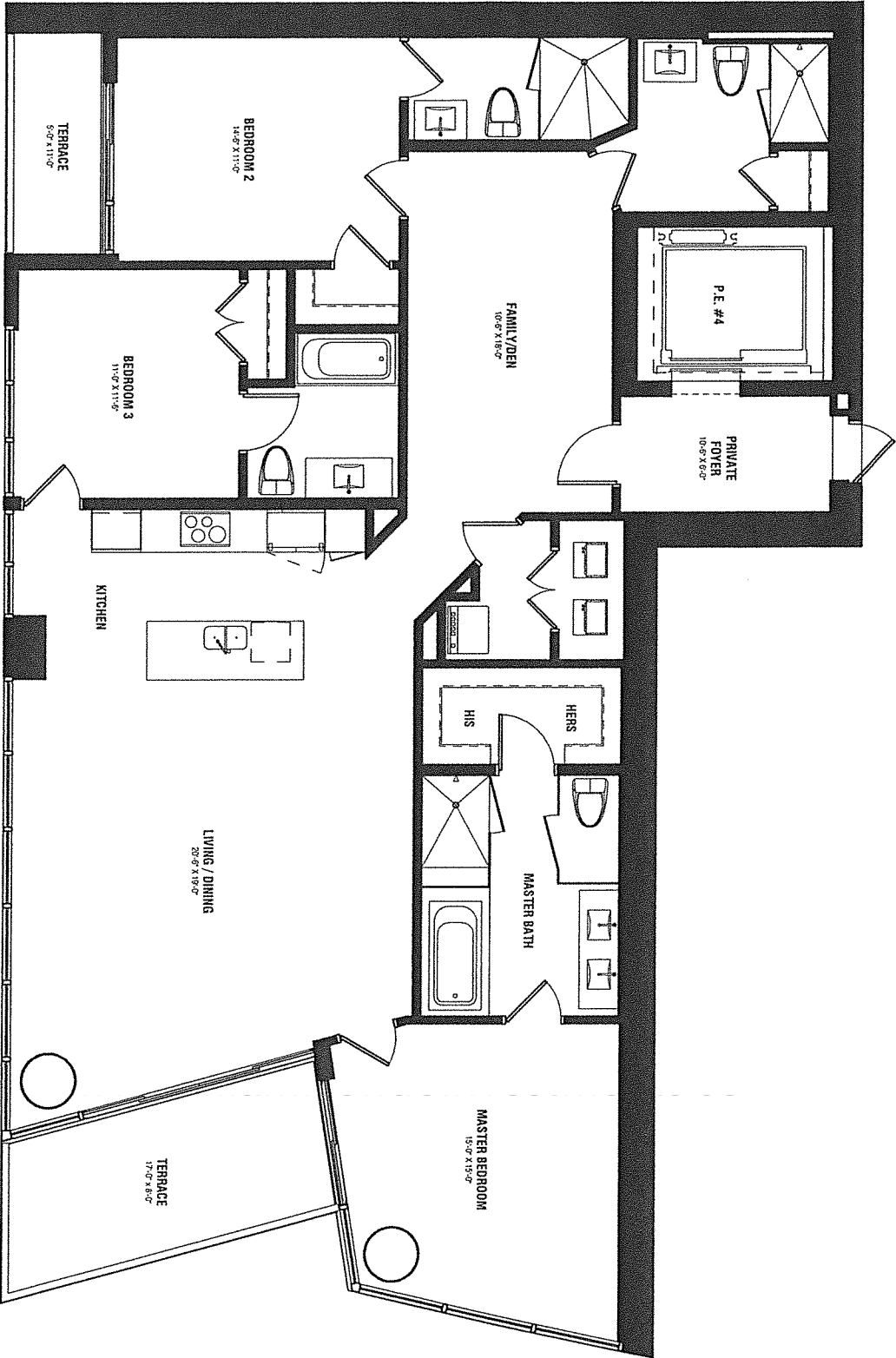
UNIT 2C
AC. 1337 SF. - TERRACE: 200 SF. - TOTAL: 1537 SF



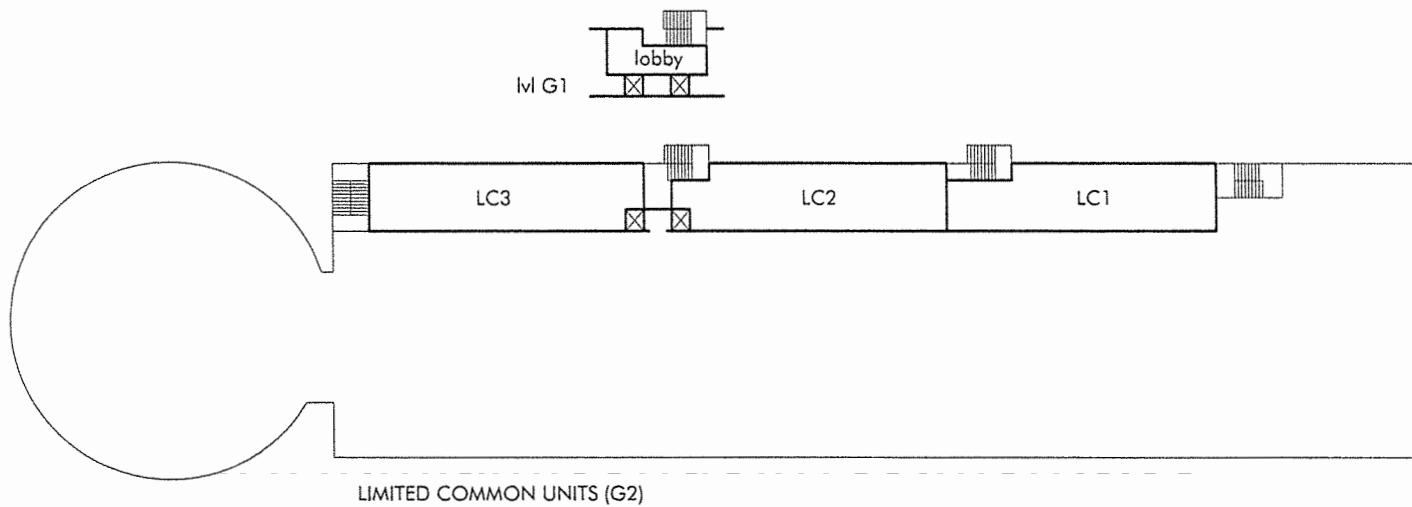
UNIT 2D
 AC: 1279 SF - TERRACE: 166 SF - TOTAL: 1445 SF



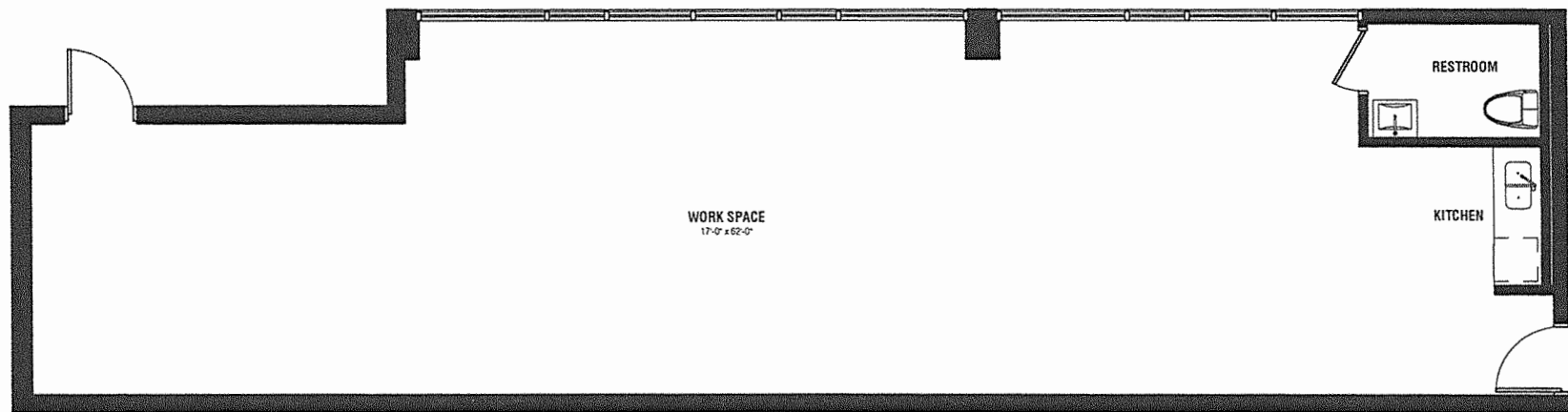
UNIT 3A
 AC: 1898 SF - TERRACE: 216 SF - TOTAL: 2114 SF



UNIT 3B
 AC: 2100 SF - TERRACE: 198 SF - TOTAL: 2298 SF

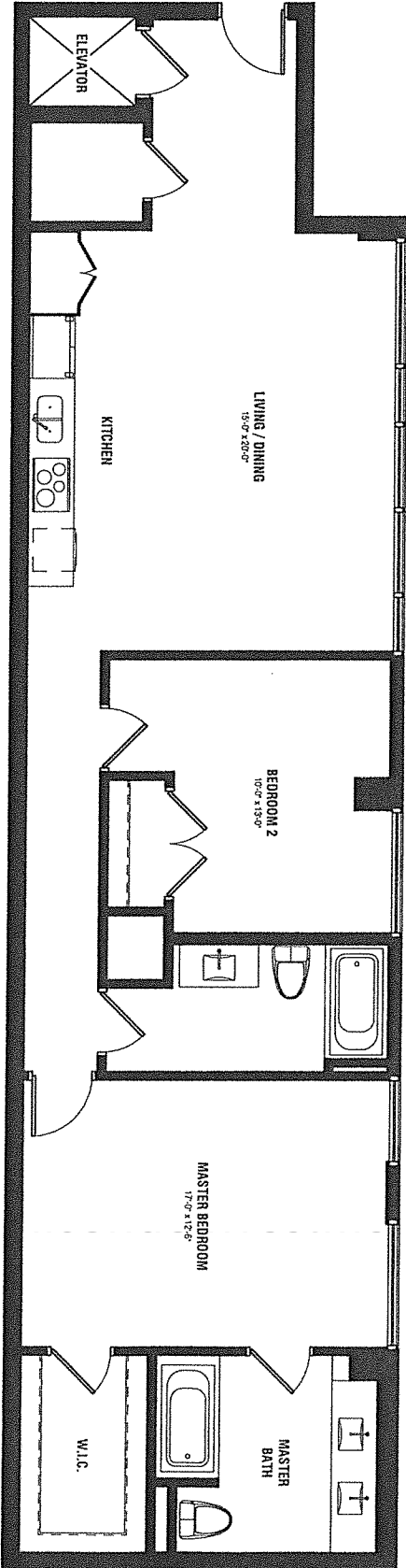


LIMITED COMMON UNITS (G2)



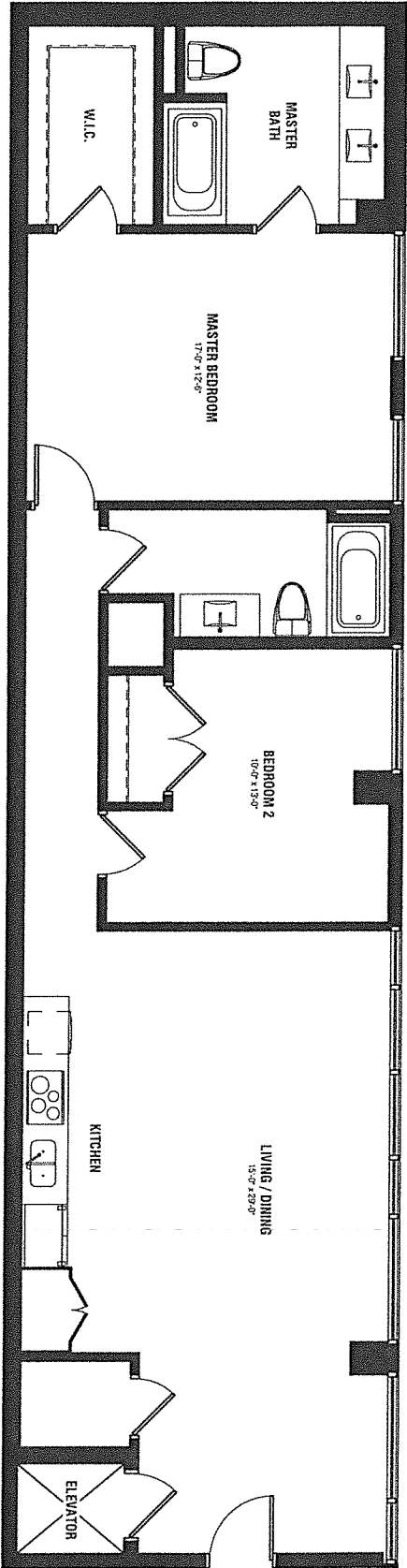
UNIT LC-1

AC: 1253 SF



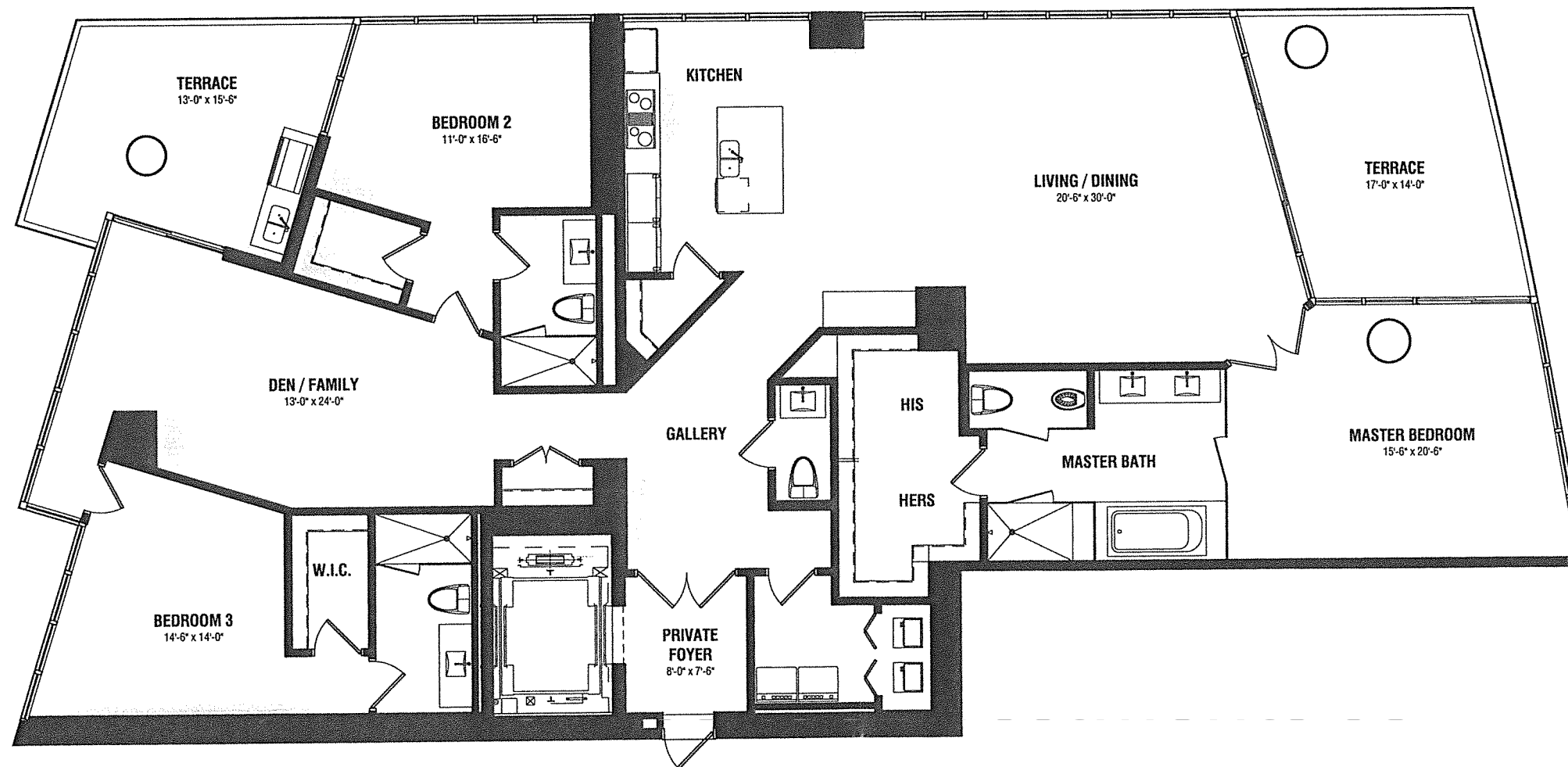
UNIT LC-2

A.C. 1297 SF



UNIT LC-3

AC: 1343 SF

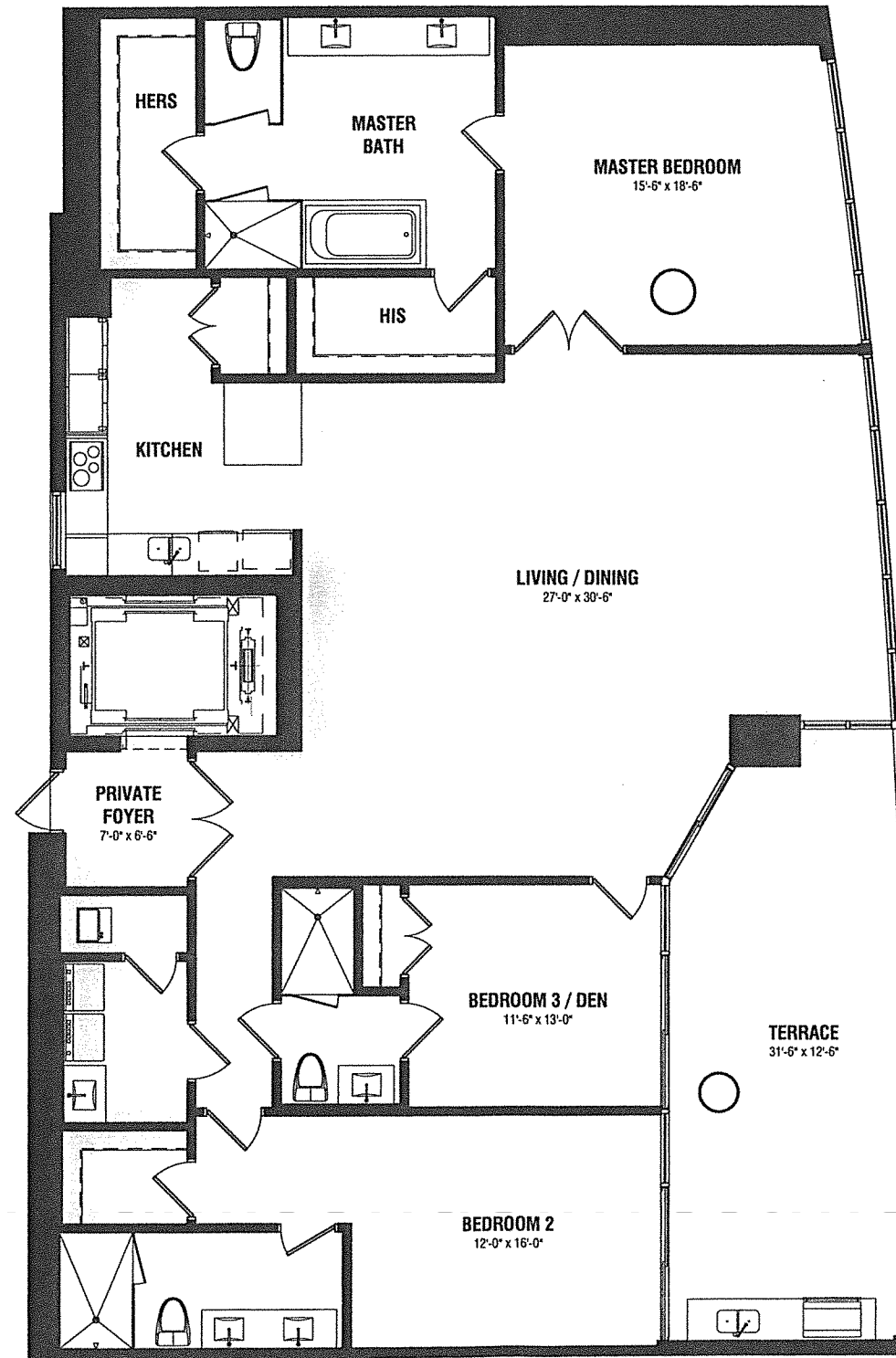


PENTHOUSE UNIT 1

AC: 3020 SF - TERRACE: 468 SF - TOTAL: 3488 SF



Stated square footages and dimensions are measured to the exterior boundaries of the exterior walls and the centerline of interior demising walls and in fact vary from the dimensions that would be determined by using the description and definition of the "unit" set forth in the declaration (which generally only includes the interior airspace between the perimeter walls and excludes all interior structural components and other common elements). This method is generally used in sales materials and is provided to allow a prospective buyer to compare the units with units in other condominium projects that utilize the same method. For your reference, the area of the unit, determined in accordance with these defined unit boundaries, is set forth above and is labeled as "ac" (terraces, although included in the total square footage, are not part of the unit). Measurements of rooms set forth on this floor plan are generally taken at the farthest points of each given room (as if the room were a perfect rectangle), without regard for any cutouts or variations. Accordingly, the area of the actual room will typically be smaller than the product obtained by multiplying the stated length and width. All dimensions are estimates which will vary with actual construction, and all floor plans, specifications and other development plans are proposed and conceptual only, which are subject to change and will not necessarily accurately reflect the final plans and specifications for the development.

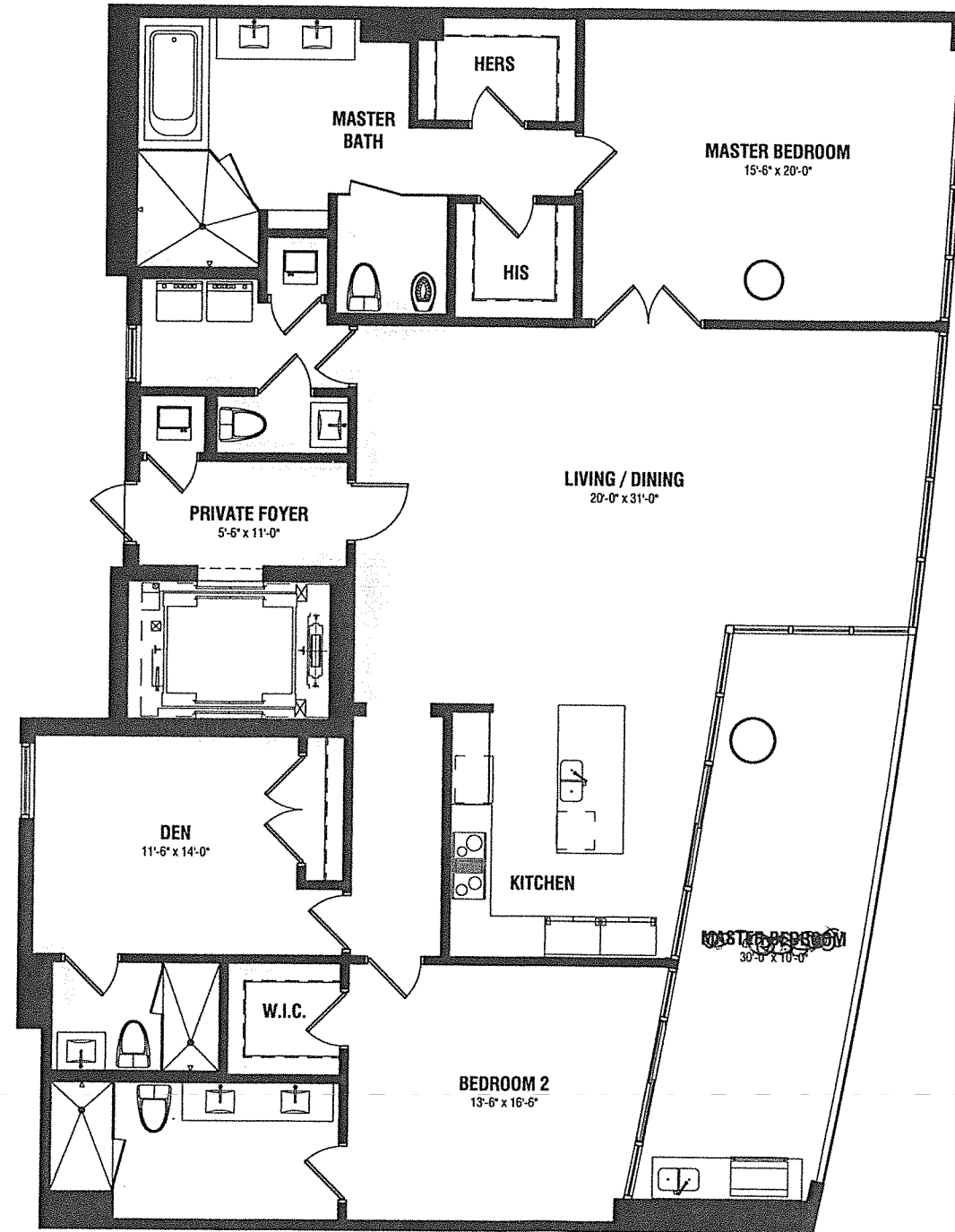


PENTHOUSE UNIT 2

AC: 2555 SF - TERRACE: 373 SF - TOTAL: 2928 SF



Stated square footages and dimensions are measured to the exterior boundaries of the exterior walls and the centerline of interior demising walls and in fact vary from the dimensions that would be determined by using the description and definition of the "unit" set forth in the declaration (which generally only includes the interior airspace between the perimeter walls and excludes all interior structural components and other common elements). This method is generally used in sales materials and is provided to allow a prospective buyer to compare the units with units in other condominium projects that utilize the same method. For your reference, the area of the unit, determined in accordance with these defined unit boundaries, is set forth above and is labeled as "ac" (terraces, although included in the total square footage, are not part of the unit). Measurements of rooms set forth on this floor plan are generally taken at the farthest points of each given room (as if the room were a perfect rectangle), without regard for any cutouts or variations. Accordingly, the area of the actual room will typically be smaller than the product obtained by multiplying the stated length and width. All dimensions are estimates which will vary with actual construction, and all floor plans, specifications and other development plans are proposed and conceptual only, which are subject to change and will not necessarily accurately reflect the final plans and specifications for the development.

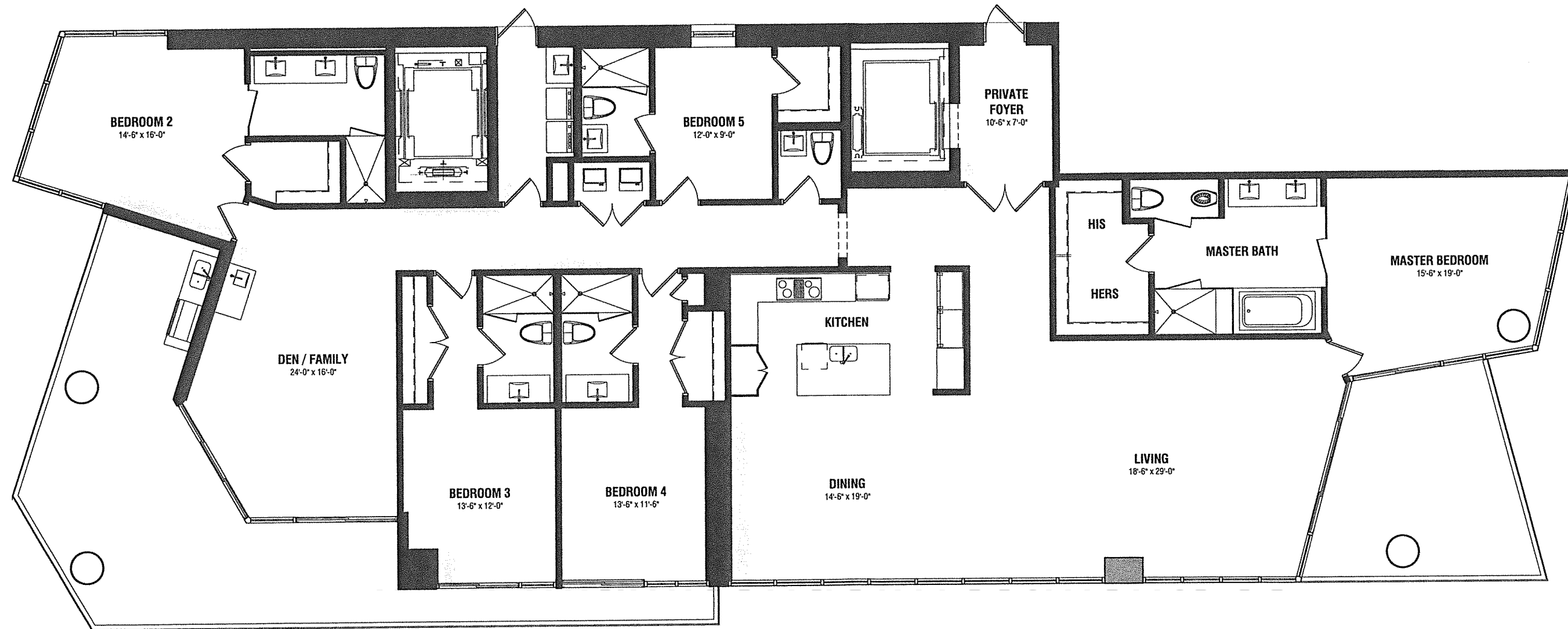


PENTHOUSE UNIT 3

AC: 2410 SF - TERRACE: 299 SF - TOTAL: 2709 SF



Stated square footages and dimensions are measured to the exterior boundaries of the exterior walls and the centerline of interior demising walls and in fact vary from the dimensions that would be determined by using the description and definition of the "unit" set forth in the declaration (which generally only includes the interior airspace between the perimeter walls and excludes all interior structural components and other common elements). This method is generally used in sales materials and is provided to allow a prospective buyer to compare the units with units in other condominium projects that utilize the same method. For your reference, the area of the unit, determined in accordance with these defined unit boundaries, is set forth above and is labeled as "ac" (terraces, although included in the total square footage, are not part of the unit). Measurements of rooms set forth on this floor plan are generally taken at the farthest points of each given room (as if the room were a perfect rectangle), without regard for any cutouts or variations. Accordingly, the area of the actual room will typically be smaller than the product obtained by multiplying the stated length and width. All dimensions are estimates which will vary with actual construction, and all floor plans, specifications and other development plans are proposed and conceptual only, which are subject to change and will not necessarily accurately reflect the final plans and specifications for the development.

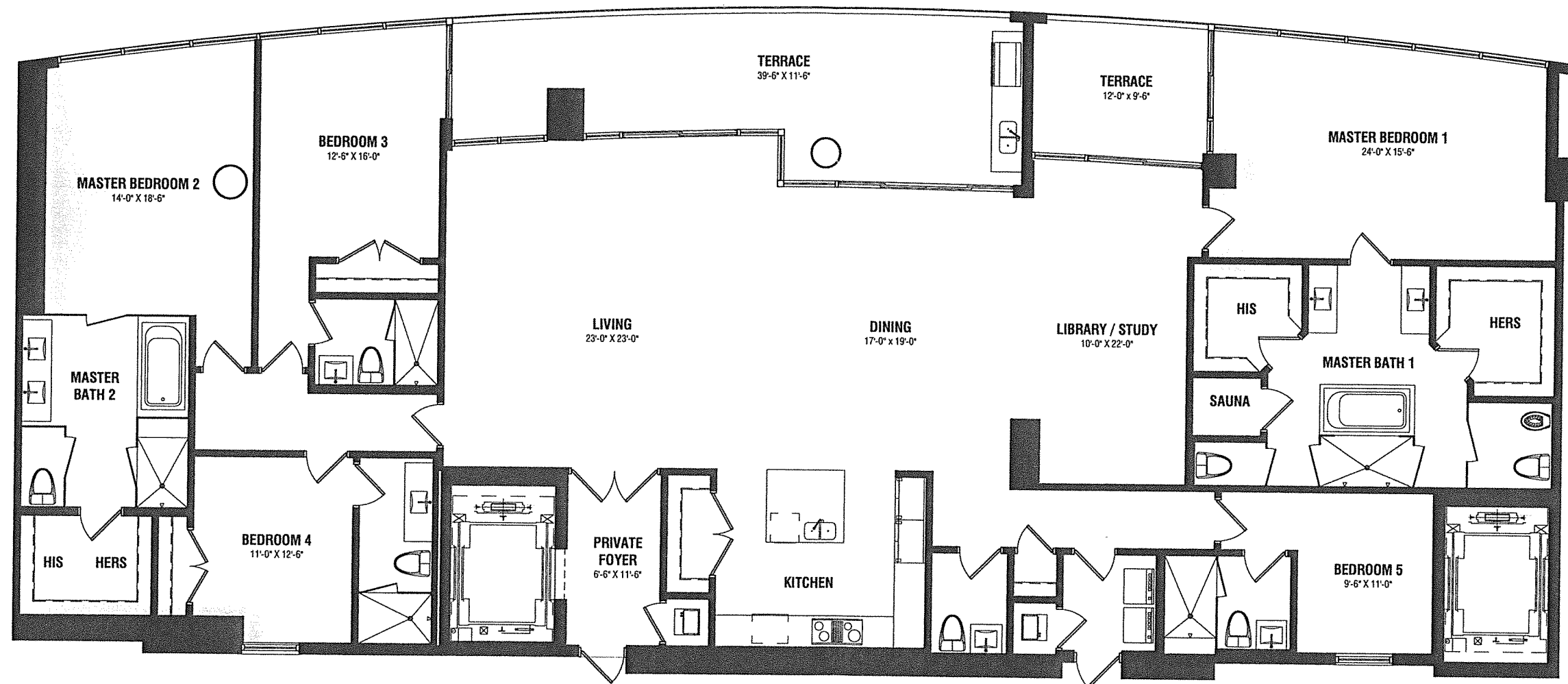


PENTHOUSE UNIT 4

AC: 3812 SF - TERRACE: 818 SF - TOTAL: 4630 SF



Stated square footages and dimensions are measured to the exterior boundaries of the exterior walls and the centerline of interior demising walls and in fact vary from the dimensions that would be determined by using the description and definition of the "unit" set forth in the declaration (which generally only includes the interior airspace between the perimeter walls and excludes all interior structural components and other common elements). This method is generally used in sales materials and is provided to allow a prospective buyer to compare the units with units in other condominium projects that utilize the same method. For your reference, the area of the unit, determined in accordance with these defined unit boundaries, is set forth above and is labeled as "ac" (terraces, although included in the total square footage, are not part of the unit). Measurements of rooms set forth on this floor plan are generally taken at the farthest points of each given room (as if the room were a perfect rectangle), without regard for any cutouts or variations. Accordingly, the area of the actual room will typically be smaller than the product obtained by multiplying the stated length and width. All dimensions are estimates which will vary with actual construction, and all floor plans, specifications and other of rooms set forth on this floor plan are generally taken at the farthest points of each given room (as if the room were a perfect rectangle), without regard for any cutouts or variations.

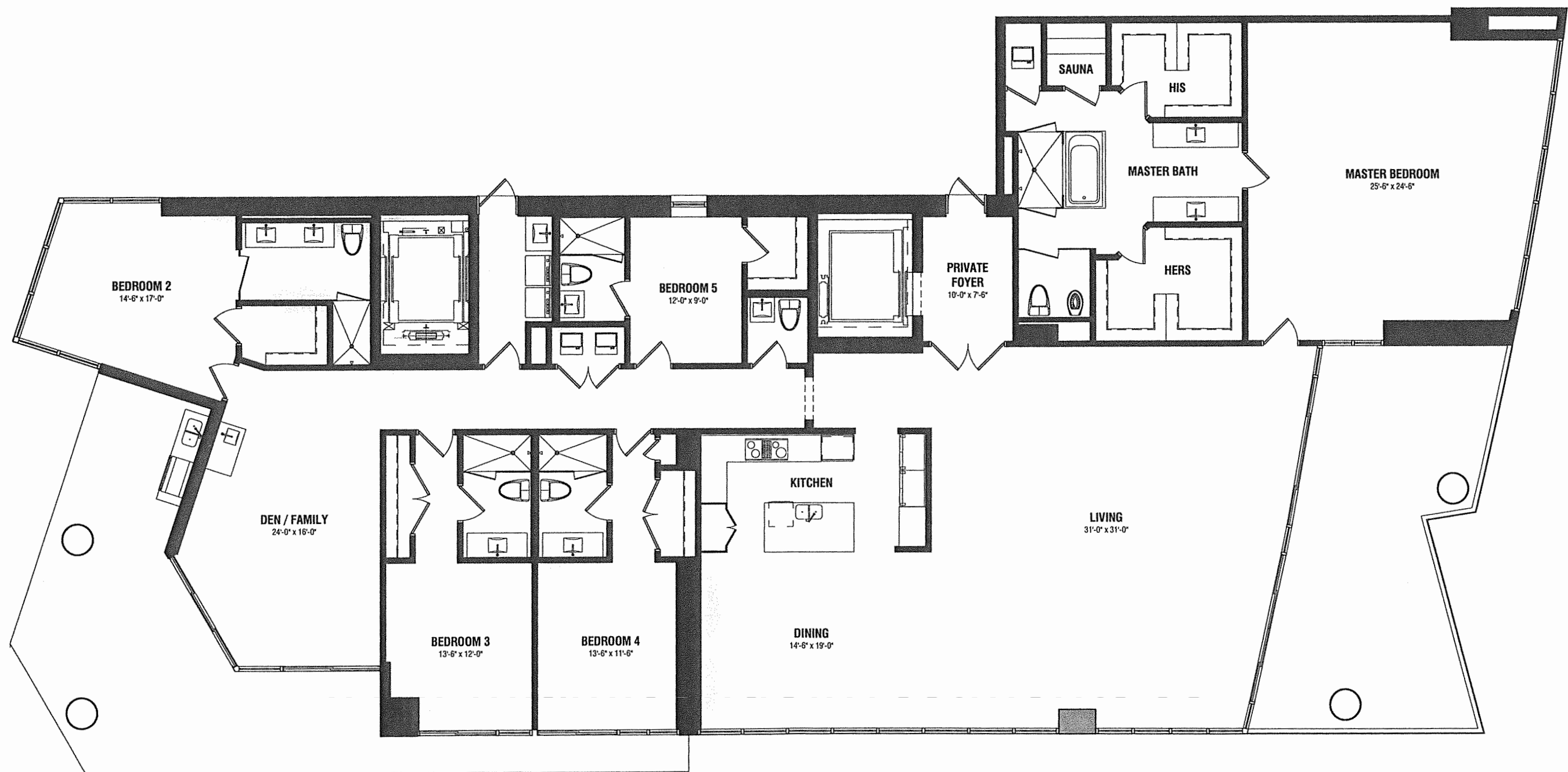


PENTHOUSE UNIT 5

AC: 3980 SF - TERRACE: 509 SF - TOTAL: 4489 SF



Stated square footages and dimensions are measured to the exterior boundaries of the exterior walls and the centerline of interior demising walls and in fact vary from the dimensions that would be determined by using the description and definition of the "unit" set forth in the declaration (which generally only includes the interior airspace between the perimeter walls and excludes all interior structural components and other common elements). This method is generally used in sales materials and is provided to allow a prospective buyer to compare the units with units in other condominium projects that utilize the same method. For your reference, the area of the unit, determined in accordance with these defined unit boundaries, is set forth above and is labeled as "ac" (terraces, although included in the total square footage, are not part of the unit). Measurements of rooms set forth on this floor plan are generally taken at the farthest points of each given room (as if the room were a perfect rectangle), without regard for any cutouts or variations. Accordingly, the area of the actual room will typically be smaller than the product obtained by multiplying the stated length and width. All dimensions are estimates which will vary with actual construction, and all floor plans, specifications and other development plans are proposed and conceptual only, which are subject to change and will not necessarily accurately reflect the final plans and specifications for the development.



PENTHOUSE UNIT 6

AC: 4721 SF - TERRACE: 1053 SF - TOTAL: 5774 SF



Stated square footages and dimensions are measured to the exterior boundaries of the exterior walls and the centerline of interior demising walls and in fact vary from the dimensions that would be determined by using the description and definition of the "unit" set forth in the declaration (which generally only includes the interior airspace between the perimeter walls and excludes all interior structural components and other common elements). This method is generally used in sales materials and is provided to allow a prospective buyer to compare the units with units in other condominium projects that utilize the same method. For your reference, the area of the unit, determined in accordance with these defined unit boundaries, is set forth above and is labeled as "ac" (terraces, although included in the total square footage, are not part of the unit). Measurements of rooms set forth on this floor plan are generally taken at the farthest points of each given room (as if the room were a perfect rectangle), without regard for any cutouts or variations. Accordingly, the area of the actual room will typically be smaller than the product obtained by multiplying the stated length and width. All dimensions are estimates which will vary with actual construction, and all floor plans, specifications and other development plans are proposed and conceptual only, which are subject to change and will not necessarily accurately reflect the final plans and specifications for the development.