

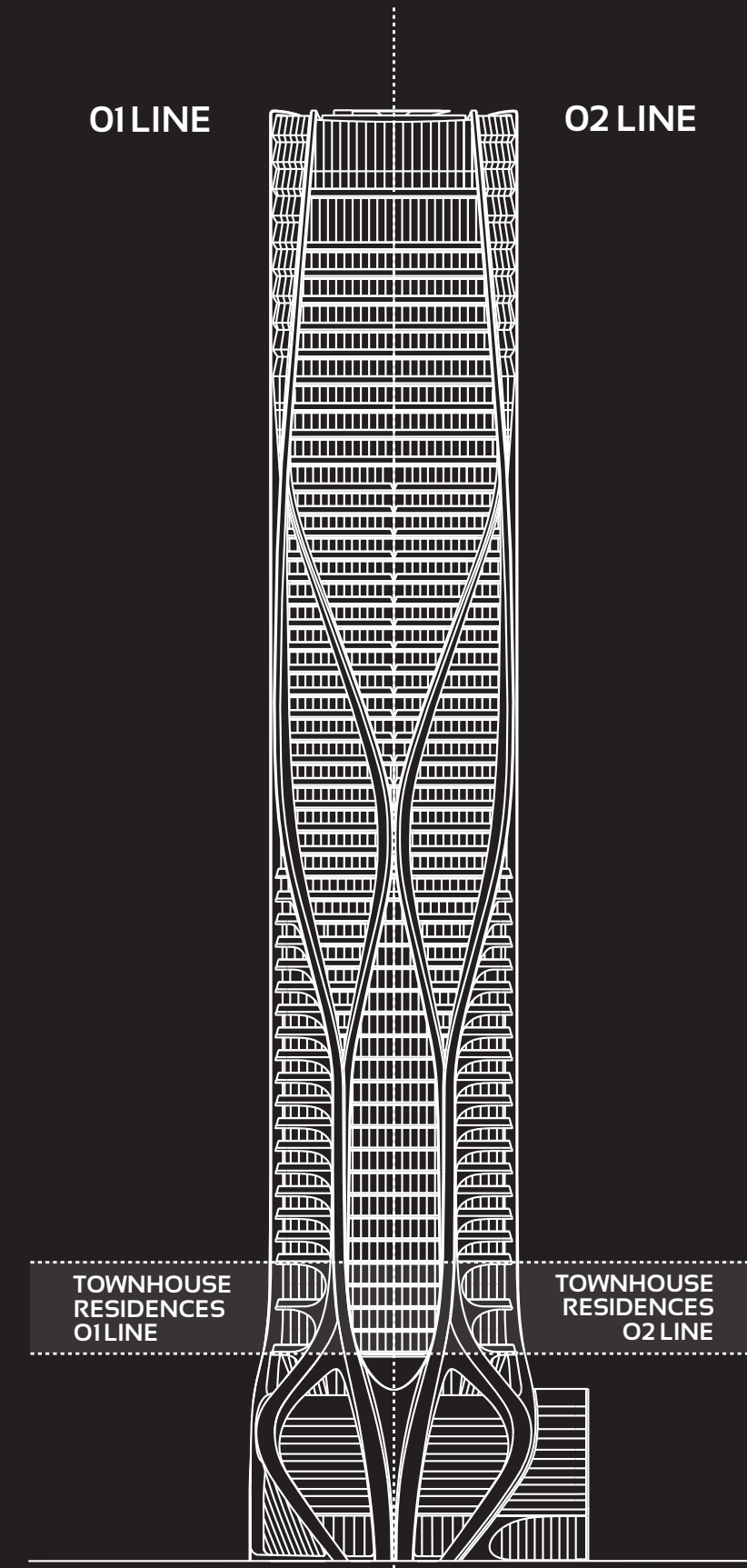
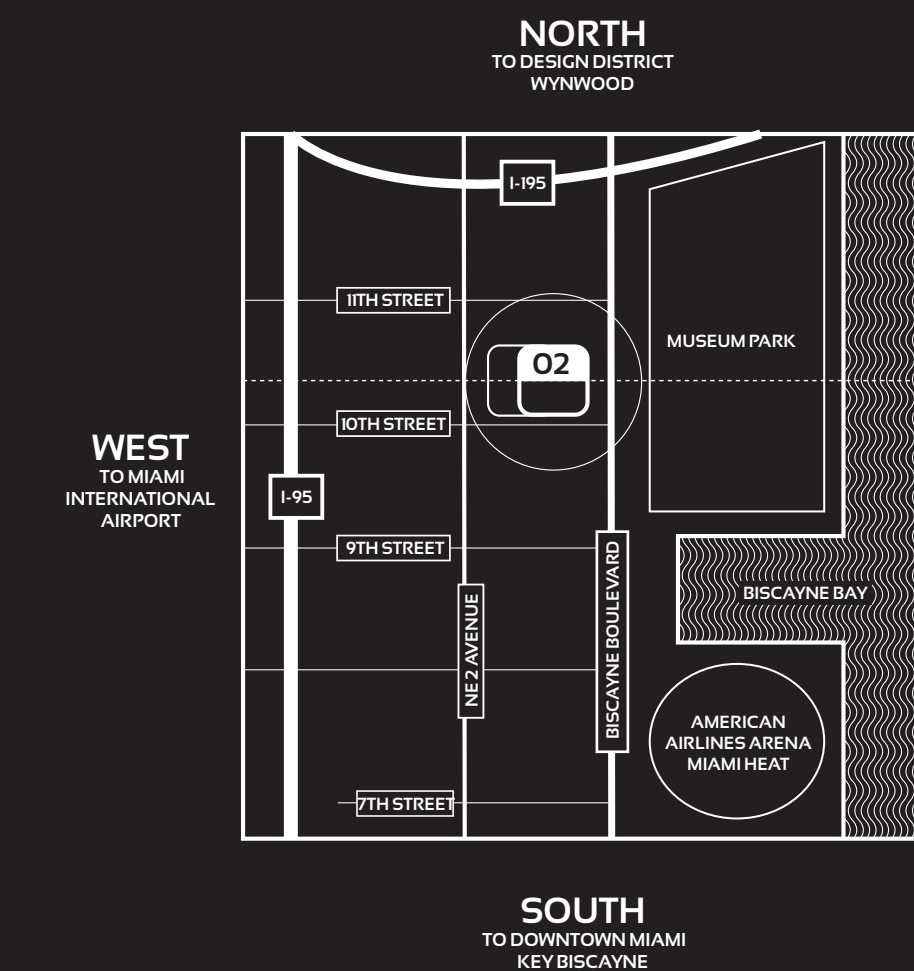
# ONE THOUSAND MUSEUM

BY ZAHA HADID ARCHITECTS

## TOWNHOUSE RESIDENCE 1002 - LEVELS 10 - 11

5 BEDROOM - 6.5 BATHROOM

INTERIORS: 8,060 SQFT 749 M<sup>2</sup>  
 TERRACES: 834 SQFT 77 M<sup>2</sup>  
 TOTAL AREA: 8,894 SQFT 826 M<sup>2</sup>

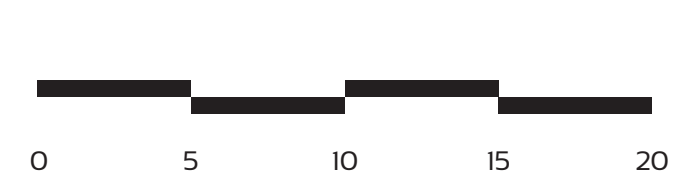
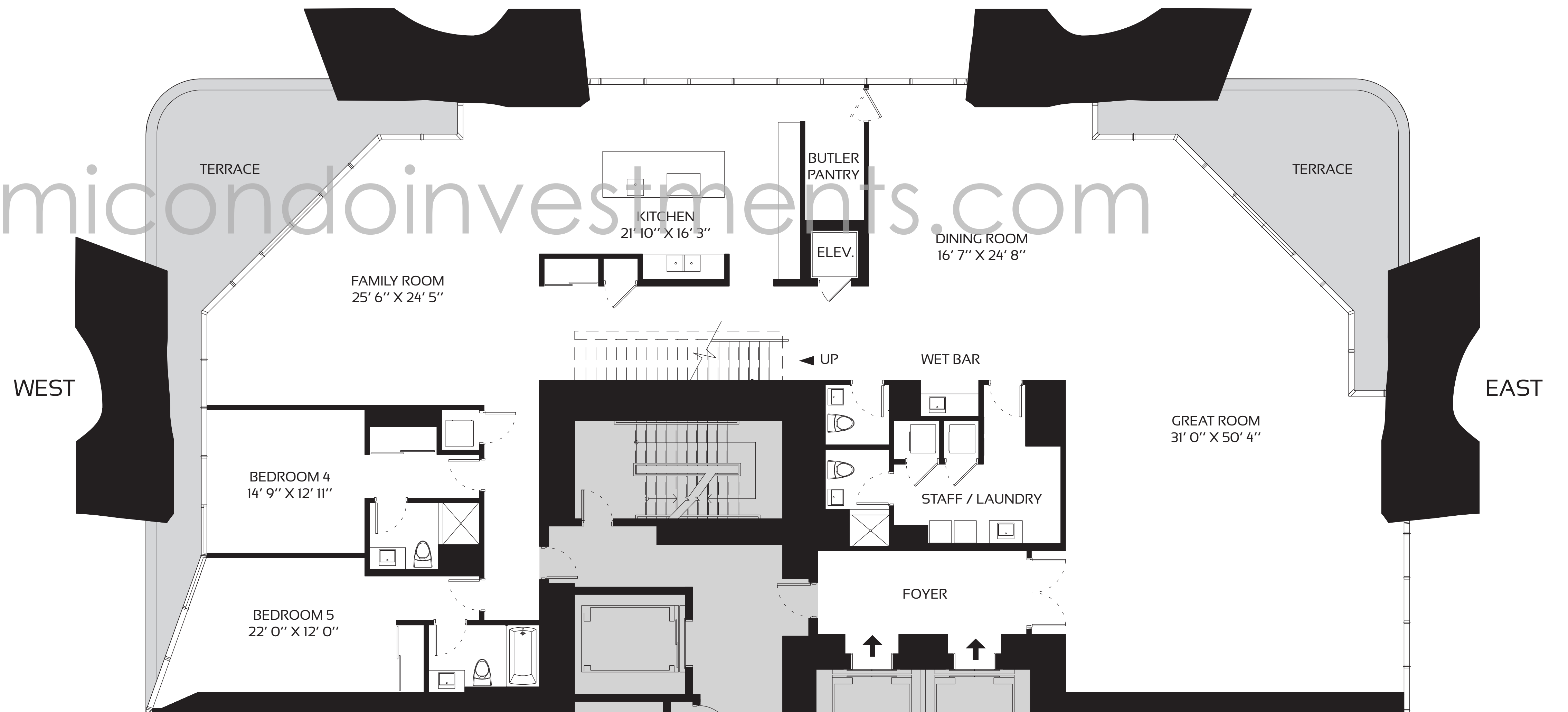
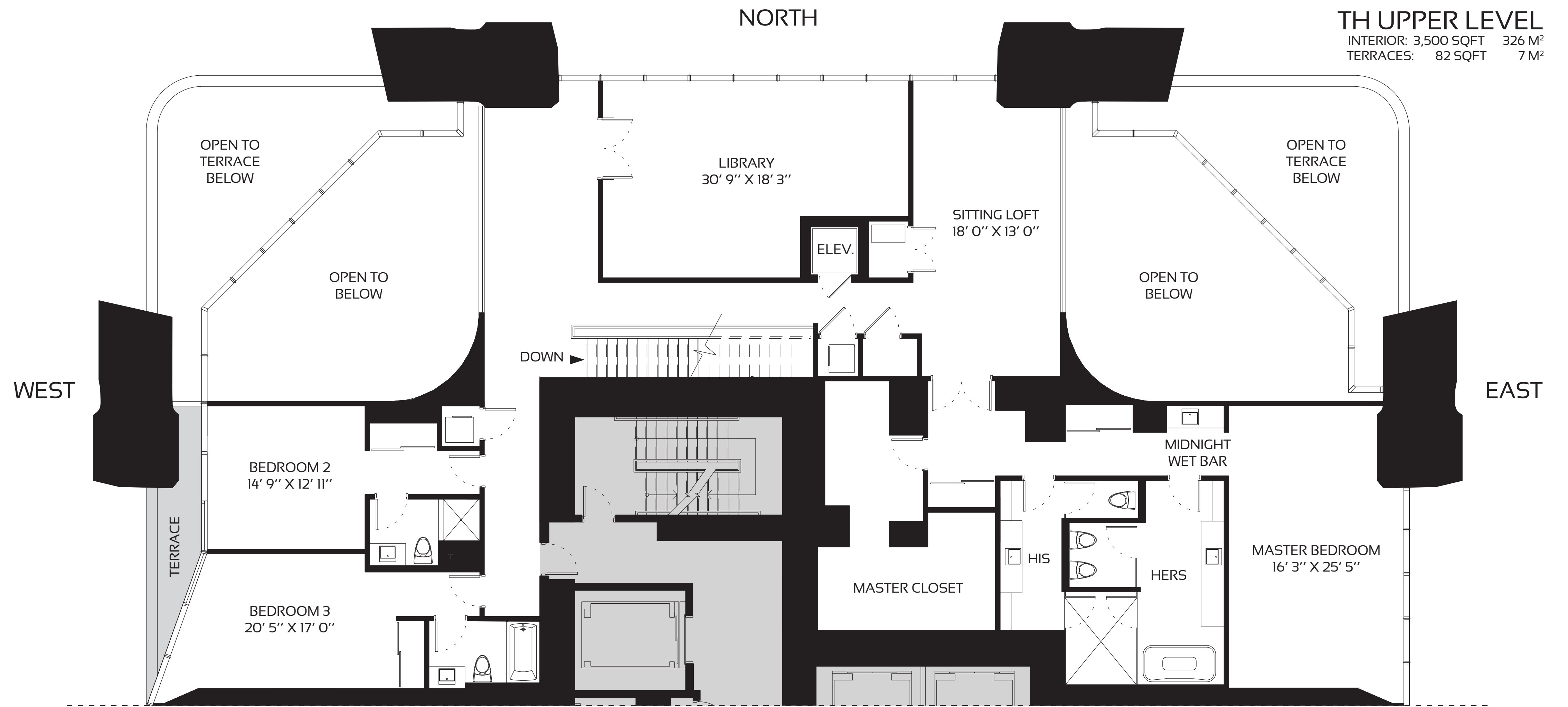


- TOWER FEATURES**
- ARCHITECTURE AND AMENITY SPACES DESIGNED BY ZAHA HADID ARCHITECTS
  - LANDSCAPE ARCHITECTURE BY ENZO ANGELINI
  - MUSEUM-QUALITY INTERIOR AND EXTERIOR ILLUMINATION
  - AMENITY SPACE SCENTING CRAFTED BY 12.29 OLFACTORY CONSULTANTS
  - FUNCTIONALLY INTEGRATED SECURITY AND TECHNOLOGY PROGRAM
- RESIDENTIAL FEATURES**
- ESTATE-SIZE HALF-FLOOR, FULL-FLOOR, AND DUPLEX RESIDENCES
  - MULTIPLE OVERSIZED BALCONIES IN EVERY RESIDENCE
  - CEILING HEIGHTS FROM 10 TO 20 FEET IN MAIN LIVING AREAS
  - FLOOR-TO-CEILING WINDOW WALLS
  - CUSTOMIZED ILLUMINATION DESIGNED BY ULI + FRIENDS
  - INTEGRATED HOME AUTOMATION BY CRESTRON
  - CUSTOM KITCHENS BY GATTO CUCINE WITH GAGGENAU AND SUB-ZERO APPLIANCES

- AMENITIES**
- OUTDOOR POOL & RECREATIONAL TERRACE
  - FITNESS CENTER
  - SPA
  - INDOOR AQUATIC CENTER
  - SKY LOUNGE
  - PRIVATE ROOFTOP HELIPAD
  - SECURE ON-SITE PARKING
- SERVICES**
- ON-SITE MANAGEMENT PERSONNEL
  - CONCIERGE
  - ON-SITE SECURITY PERSONNEL
  - VALET PARKING

ORAL REPRESENTATIONS CANNOT BE RELIED UPON AS CORRECTLY STATING REPRESENTATIONS OF THE DEVELOPER. FOR CORRECT REPRESENTATIONS, MAKE REFERENCE TO THIS BROCHURE AND TO THE DOCUMENTS REQUIRED BY SECTION 718.503, FLORIDA STATUTES, TO BE FURNISHED BY A DEVELOPER TO A BUYER OR LESSEE.

Use and operation of the helipad are conditioned upon obtaining FAA and other governmental approvals. Approval has not yet been obtained. No assurance can be given about whether the approvals can be obtained, and/or if so, the timing of same. Stated dimensions are measured to the exterior boundaries of the exterior walls and the centerline of interior demising walls and in fact vary from the dimensions that would be determined by using the description and definition of the "Unit" set forth in the Declaration (which generally only includes the interior airspace between the perimeter walls and excludes interior structural components). Additionally, measurements of rooms set forth on any floor plan are generally taken at the greatest points of each given room (as if the room were a perfect rectangle), without regard for any cutouts. Accordingly, the area of the actual room will typically be smaller than the product obtained by multiplying the stated length times width. All dimensions are approximate, and all floor plans and development plans are subject to change. This is not intended to be an offer to sell, or solicitation to buy, condominium units in any other jurisdiction where prohibited by law, and your eligibility for purchase will depend upon your state of residency. This offering is made only by the prospectus for the condominium and no statement should be relied upon if not made in the prospectus. The sketches, renderings, graphic materials, plans, specifications, terms, conditions and statements contained in this brochure are proposed only, and the Developer reserves the right to modify, revise or withdraw any or all of same in its sole discretion and without prior notice. These drawings and depictions are conceptual only and are for the convenience of reference. They should not be relied upon as representations, express or implied, of the final detail of the building, the residences or the amenities. The developer expressly reserves the right to make modifications, revisions, and changes it deems desirable in its sole and absolute discretion. All depictions of furnishings, finishes, appliances, counters, soffits, floor coverings and other matters of detail, including, without limitation, items of finish and decoration, are conceptual only and are not necessarily included in each Unit. Consult your Agreement and the prospectus for the items included with the Unit. The photographs contained in this brochure may be stock photography or have been taken off-site and are used to depict the spirit of the lifestyles to be achieved rather than any that may exist or that may be proposed, and are merely intended as illustrations of the activities and concepts depicted therein.



TH UPPER LEVEL  
 INTERIOR: 3,500 SQFT 326 M<sup>2</sup>  
 TERRACES: 82 SQFT 7 M<sup>2</sup>

1002 LOWER LEVEL  
 INTERIOR: 4,560 SQFT 423 M<sup>2</sup>  
 TERRACES: 752 SQFT 70 M<sup>2</sup>

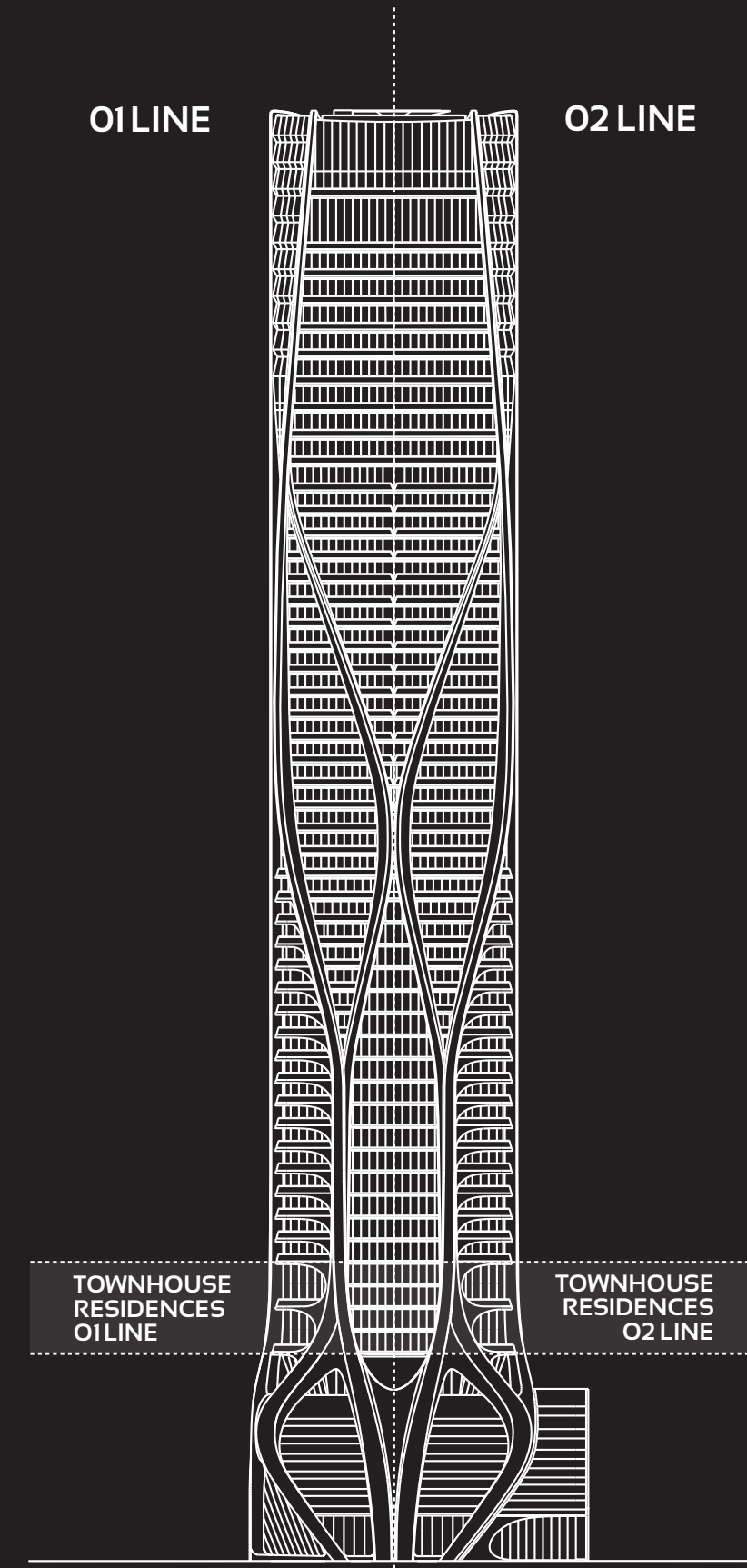
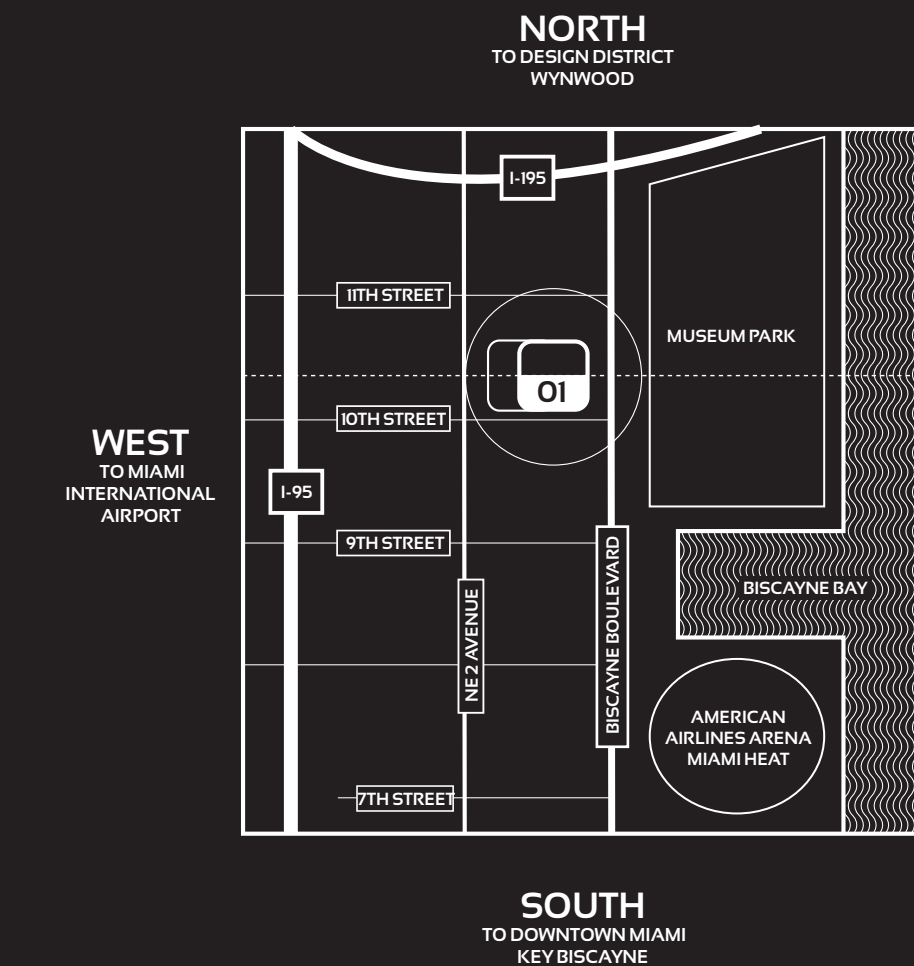
# ONE THOUSAND MUSEUM

BY ZAHA HADID ARCHITECTS

## TOWNHOUSE RESIDENCE 1201 - LEVELS 12 - 14

5 BEDROOM - 6.5 BATHROOM

INTERIORS: 8,102 SQFT 753 M<sup>2</sup>  
 TERRACES: 899 SQFT 84 M<sup>2</sup>  
 TOTAL AREA: 9,001 SQFT 837 M<sup>2</sup>



### TOWER FEATURES

- ARCHITECTURE AND AMENITY SPACES DESIGNED BY ZAHA HADID ARCHITECTS
- LANDSCAPE ARCHITECTURE BY ENZO ANGELINI
- MUSEUM-QUALITY INTERIOR AND EXTERIOR ILLUMINATION
- AMENITY SPACE SCENTING CRAFTED BY 12.29 OLFACTORY CONSULTANTS
- FUNCTIONALLY INTEGRATED SECURITY AND TECHNOLOGY PROGRAM

### RESIDENTIAL FEATURES

- ESTATE-SIZE HALF-FLOOR, FULL-FLOOR, AND DUPLEX RESIDENCES
- MULTIPLE OVERSIZED BALCONIES IN EVERY RESIDENCE
- CEILING HEIGHTS FROM 10 TO 20 FEET IN MAIN LIVING AREAS
- FLOOR-TO-CEILING WINDOW WALLS
- CUSTOMIZED ILLUMINATION DESIGNED BY ULI + FRIENDS
- INTEGRATED HOME AUTOMATION BY CRESTRON
- CUSTOM KITCHENS BY GATTO CUCINE WITH GAGGENAU AND SUB-ZERO APPLIANCES

### AMENITIES

- OUTDOOR POOL & RECREATIONAL TERRACE
- FITNESS CENTER
- SPA
- INDOOR AQUATIC CENTER
- SKY LOUNGE
- PRIVATE ROOFTOP HELIPAD
- SECURE ON-SITE PARKING

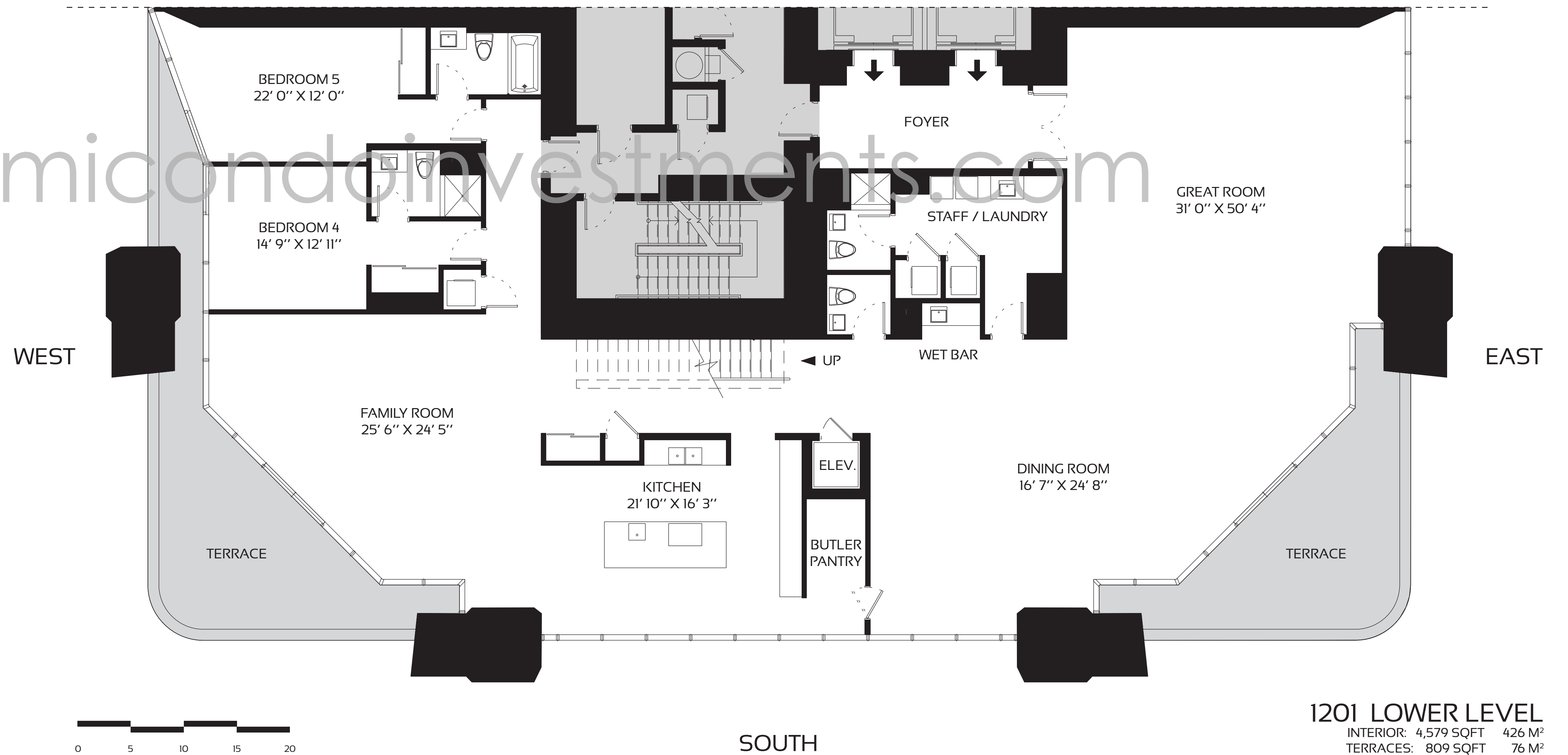
### SERVICES

- ON-SITE MANAGEMENT PERSONNEL
- CONCIERGE
- ON-SITE SECURITY PERSONNEL
- VALET PARKING

ORAL REPRESENTATIONS CANNOT BE RELIED UPON AS CORRECTLY STATING REPRESENTATIONS OF THE DEVELOPER. FOR CORRECT REPRESENTATIONS, MAKE REFERENCE TO THIS BROCHURE AND TO THE DOCUMENTS REQUIRED BY SECTION 718.503, FLORIDA STATUTES, TO BE FURNISHED BY A DEVELOPER TO A BUYER OR LESSEE.

Use and operation of the helipad are conditioned upon obtaining FAA and other governmental approvals. Approval has not yet been obtained. No assurance can be given about whether the approvals can be obtained, and/or if so, the timing of same. Stated dimensions are measured to the exterior boundaries of the exterior walls and the centerline of interior demising walls and in fact vary from the dimensions that would be determined by using the description and definition of the "Unit" set forth in the Declaration (which generally only includes the interior airspace between the perimeter walls and excludes interior structural components). Additionally, measurements of rooms set forth on any floor plan are generally taken at the greatest points of each given room (as if the room were a perfect rectangle), without regard for any cutouts. Accordingly, the area of the actual room will typically be smaller than the product obtained by multiplying the stated length times width. All dimensions are approximate, and all floor plans and development plans are subject to change. This is not intended to be an offer to sell, or solicitation to buy, condominium units in any other jurisdiction where prohibited by law, and your eligibility for purchase will depend upon your state of residency. This offering is made only by the prospectus for the condominium and no statement should be relied upon if not made in the prospectus. The sketches, renderings, graphic materials, plans, specifications, terms, conditions and statements contained in this brochure are proposed only, and the Developer reserves the right to modify, revise or withdraw any or all of same in its sole discretion and without prior notice. These drawings and depictions are conceptual only and are for the convenience of reference. They should not be relied upon as representations, express or implied, of the final detail of the building, the residences or the amenities. The developer expressly reserves the right to make modifications, revisions, and changes it deems desirable in its sole and absolute discretion. All depictions of furnishings, finishes, appliances, counters, soffits, floor coverings and other matters of detail, including, without limitation, items of finish and decoration, are conceptual only and are not necessarily included in each Unit. Consult your Agreement and the prospectus for the items included with the Unit. The photographs contained in this brochure may be stock photography or have been taken off-site and are used to depict the spirit of the lifestyles to be achieved rather than any that may exist or that may be proposed, and are merely intended as illustrations of the activities and concepts depicted therein.

TH UPPER LEVEL  
 INTERIOR: 3,523 SQFT 327 M<sup>2</sup>  
 TERRACES: 90 SQFT 8 M<sup>2</sup>



1201 LOWER LEVEL  
 INTERIOR: 4,579 SQFT 426 M<sup>2</sup>  
 TERRACES: 809 SQFT 76 M<sup>2</sup>

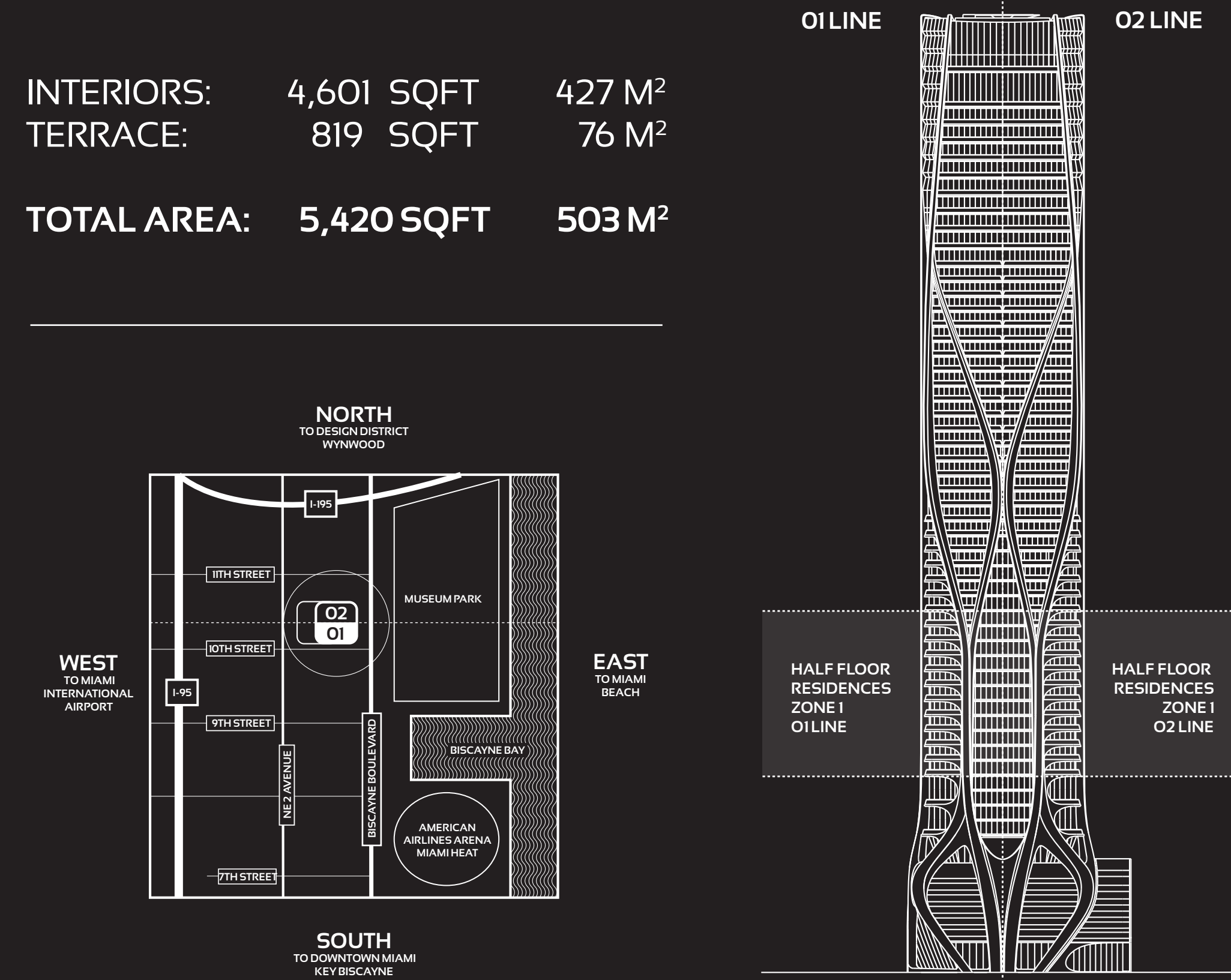
# ONE THOUSAND MUSEUM

BY ZAHA HADID ARCHITECTS

## HALF FLOOR RESIDENCES - ZONE 1 - LEVELS 15-25

### 4 BEDROOM - 5.5 BATHROOM

INTERIORS: 4,601 SQFT 427 M<sup>2</sup>  
 TERRACE: 819 SQFT 76 M<sup>2</sup>  
 TOTAL AREA: 5,420 SQFT 503 M<sup>2</sup>

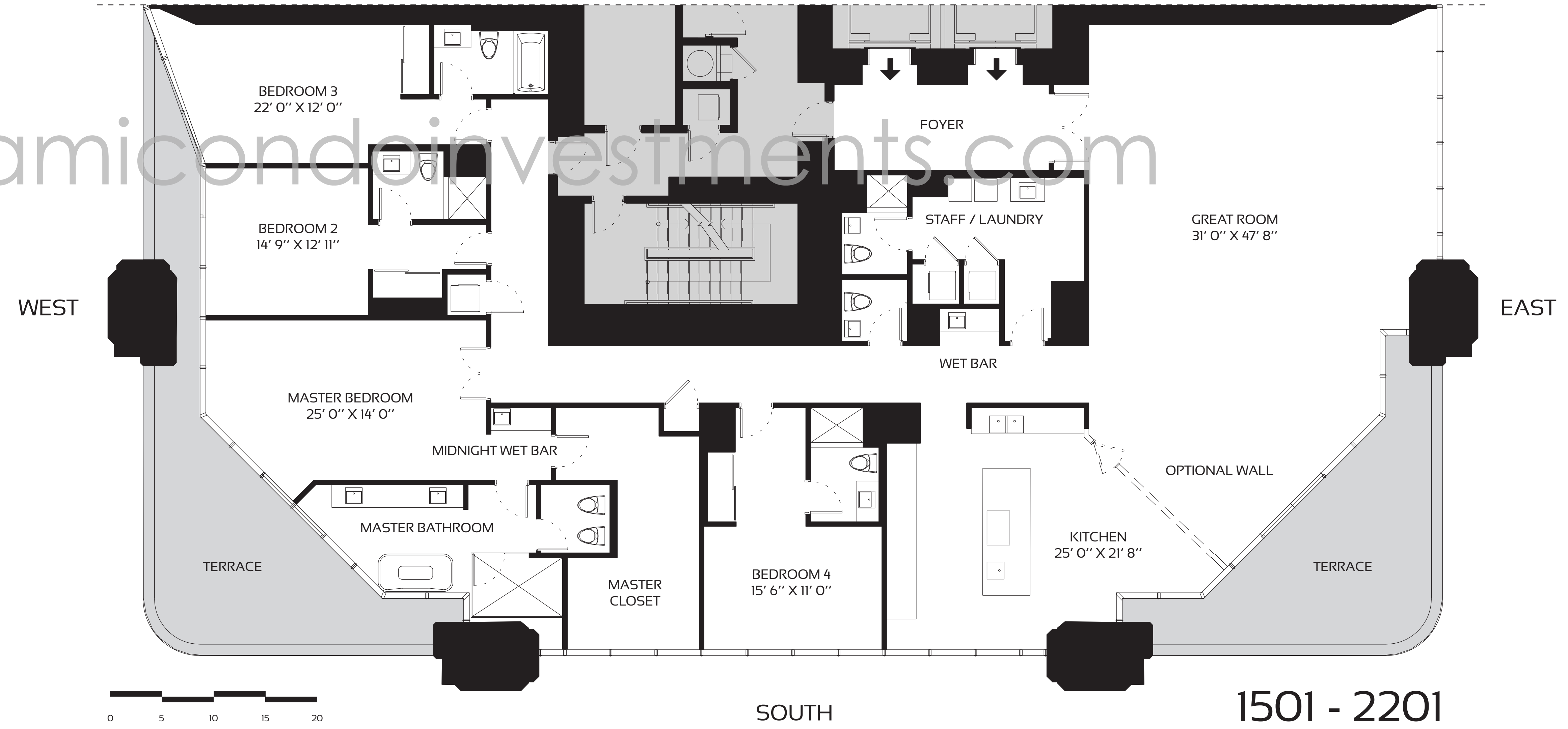
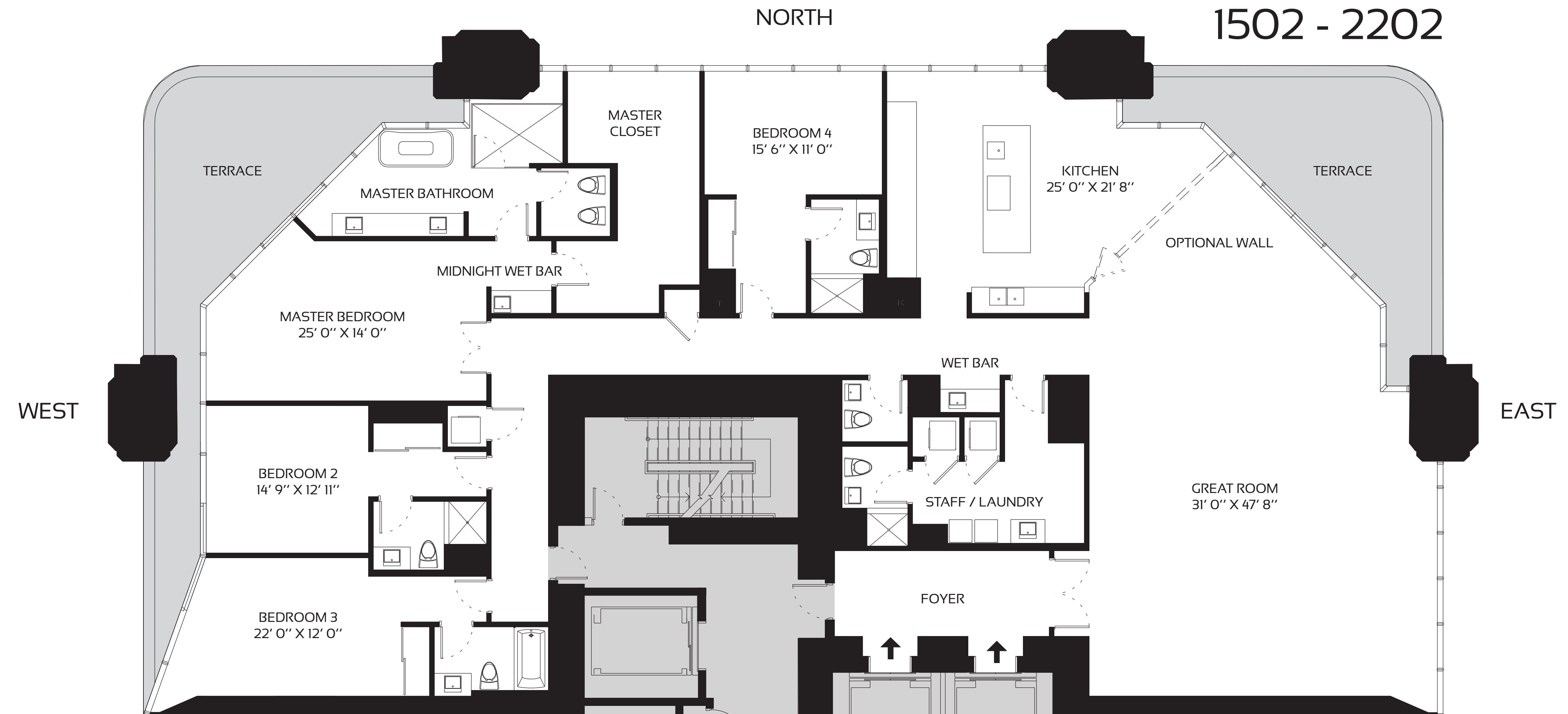


- TOWER FEATURES**
- ARCHITECTURE AND AMENITY SPACES DESIGNED BY ZAHA HADID ARCHITECTS
  - LANDSCAPE ARCHITECTURE BY ENZO ANGILERI
  - MUSEUM-QUALITY INTERIOR AND EXTERIOR ILLUMINATION
  - AMENITY SPACE SCENTING CRAFTED BY 12.29 OLFACTORY CONSULTANTS
  - FUNCTIONALLY INTEGRATED SECURITY AND TECHNOLOGY PROGRAM
- RESIDENTIAL FEATURES**
- ESTATE-SIZE HALF-FLOOR, FULL-FLOOR, AND DUPLEX RESIDENCES
  - MULTIPLE OVERSIZED BALCONIES IN EVERY RESIDENCE
  - CEILING HEIGHTS TO 10 FEET IN MAIN LIVING AREAS
  - FLOOR-TO-CEILING WINDOW WALLS
  - CUSTOMIZED ILLUMINATION DESIGNED BY ULI + FRIENDS
  - INTEGRATED HOME AUTOMATION BY CRESTRON
  - CUSTOM KITCHENS BY GATTO CUCINE WITH GAGGENAU AND SUB-ZERO APPLIANCES

- AMENITIES**
- OUTDOOR POOL & RECREATIONAL TERRACE
  - FITNESS CENTER
  - SPA
  - INDOOR AQUATIC CENTER
  - SKY LOUNGE
  - PRIVATE ROOFTOP HELIPAD
  - SECURE ON-SITE PARKING
- SERVICES**
- ON-SITE MANAGEMENT PERSONNEL
  - CONCIERGE
  - ON-SITE SECURITY PERSONNEL
  - VALET PARKING

ORAL REPRESENTATIONS CANNOT BE RELIED UPON AS CORRECTLY STATING REPRESENTATIONS OF THE DEVELOPER. FOR CORRECT REPRESENTATIONS, MAKE REFERENCE TO THIS BROCHURE AND TO THE DOCUMENTS REQUIRED BY SECTION 718.503, FLORIDA STATUTES, TO BE FURNISHED BY A DEVELOPER TO A BUYER OR LESSEE.

Use and operation of the helipad are conditioned upon obtaining FAA and other governmental approvals. Approval has not yet been obtained. No assurance can be given about whether the approvals can be obtained, and/or if so, the timing of same. Stated dimensions are measured to the exterior boundaries of the exterior walls and the centerline of interior demising walls and in fact vary from the dimensions that would be determined by using the description and definition of the "Unit" set forth in the Declaration (which generally only includes the interior airspace between the perimeter walls and excludes interior structural components). Additionally, measurements of rooms set forth on any floor plan are generally taken at the greatest points of each given room (as if the room were a perfect rectangle), without regard for any cutouts. Accordingly, the area of the actual room will typically be smaller than the product obtained by multiplying the stated length times width. All dimensions are approximate, and all floor plans and development plans are subject to change. This is not intended to be an offer to sell, or solicitation to buy, condominium units in any other jurisdiction where prohibited by law, and your eligibility for purchase will depend upon your state of residency. This offering is made only by the prospectus for the condominium and no statement should be relied upon if not made in the prospectus. The sketches, renderings, graphic materials, plans, specifications, terms, conditions and statements contained in this brochure are proposed only, and the Developer reserves the right to modify, revise or withdraw any or all of same in its sole discretion and without prior notice. These drawings and depictions are conceptual only and are for the convenience of reference. They should not be relied upon as representations, express or implied, of the final detail of the building, the residences or the amenities. The developer expressly reserves the right to make modifications, revisions, and changes it deems desirable in its sole and absolute discretion. All depictions of furnishings, finishes, appliances, counters, soffits, floor coverings and other matters of detail, including, without limitation, items of finish and decoration, are conceptual only and are not necessarily included in each Unit. Consult your Agreement and the Prospectus for the items included with the Unit. The photographs contained in this brochure may be stock photography or have been taken off-site and are used to depict the spirit of the lifestyles to be achieved rather than any that may exist or that may be proposed, and are merely intended as illustrations of the activities and concepts depicted therein.



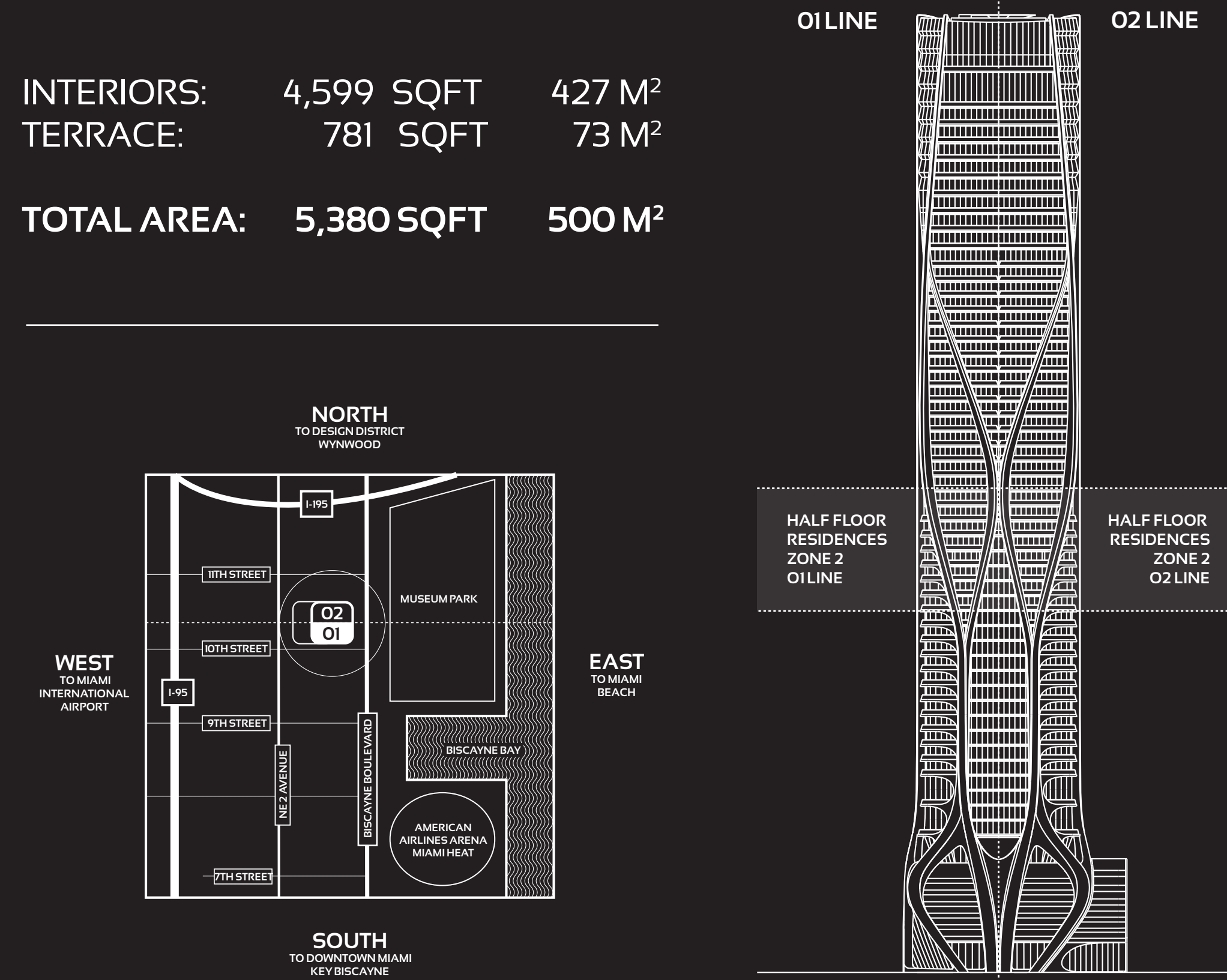
# ONE THOUSAND MUSEUM

BY ZAHA HADID ARCHITECTS

## HALF FLOOR RESIDENCES - ZONE 2 - LEVELS 26-33

### 4 BEDROOM - 5.5 BATHROOM

INTERIORS: 4,599 SQFT 427 M<sup>2</sup>  
 TERRACE: 781 SQFT 73 M<sup>2</sup>  
 TOTAL AREA: 5,380 SQFT 500 M<sup>2</sup>

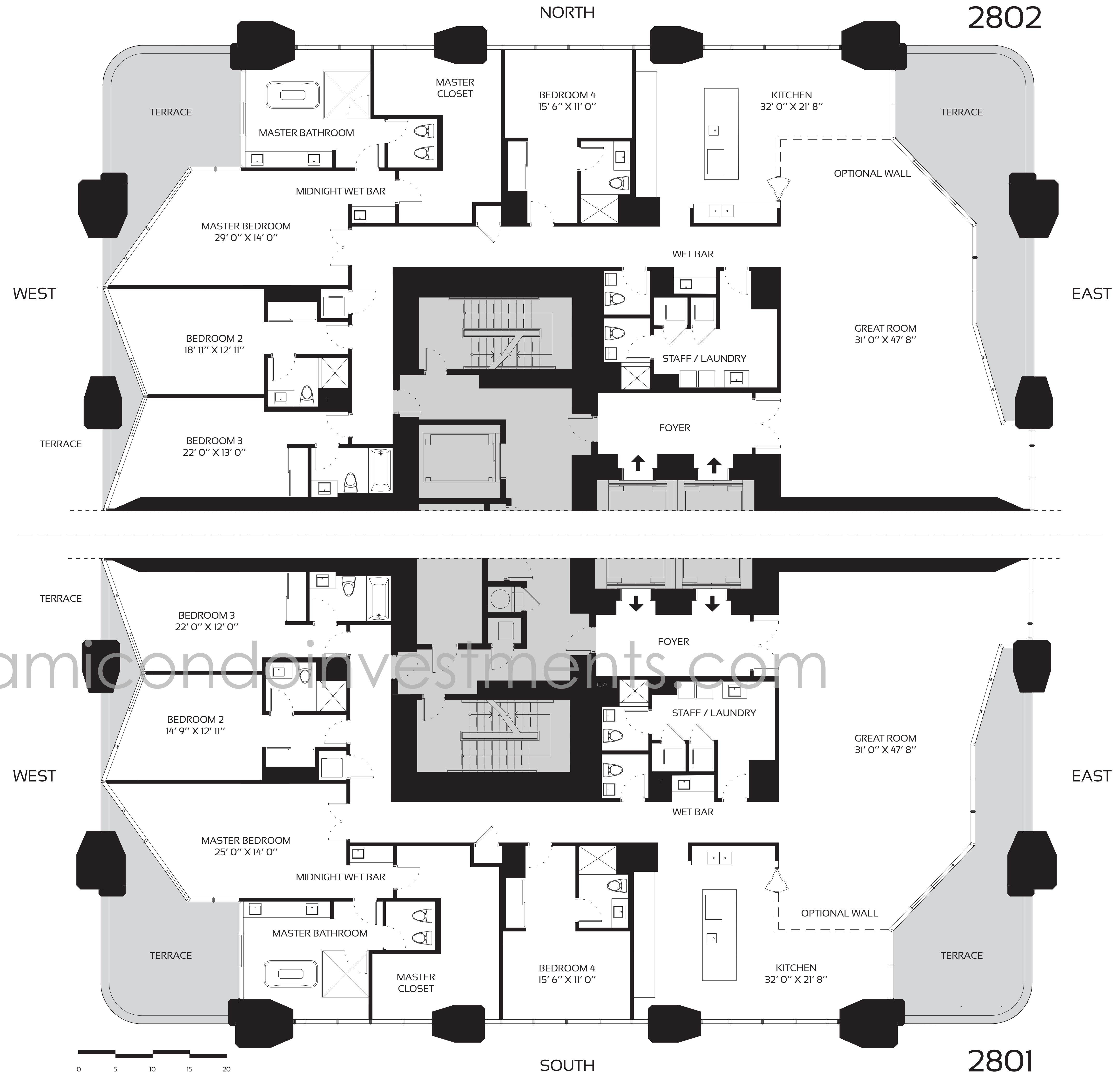


- TOWER FEATURES**
- ARCHITECTURE AND AMENITY SPACES DESIGNED BY ZAHA HADID ARCHITECTS
  - LANDSCAPE ARCHITECTURE BY ENZO ANGELA
  - MUSEUM-QUALITY INTERIOR AND EXTERIOR ILLUMINATION
  - AMENITY SPACE SCENTING CRAFTED BY 12.29 OLFACTORY CONSULTANTS
  - FUNCTIONALLY INTEGRATED SECURITY AND TECHNOLOGY PROGRAM
- RESIDENTIAL FEATURES**
- ESTATE-SIZE HALF-FLOOR, FULL-FLOOR, AND DUPLEX RESIDENCES
  - MULTIPLE OVERSIZED BALCONIES IN EVERY RESIDENCE
  - CEILING HEIGHTS TO 10 FEET IN MAIN LIVING AREAS
  - FLOOR-TO-CEILING WINDOW WALLS
  - CUSTOMIZED ILLUMINATION DESIGNED BY ULI + FRIENDS
  - INTEGRATED HOME AUTOMATION BY CRESTRON
  - CUSTOM KITCHENS BY GATTO CUCINE WITH GAGGENAU AND SUB-ZERO APPLIANCES

- AMENITIES**
- OUTDOOR POOL & RECREATIONAL TERRACE
  - FITNESS CENTER
  - SPA
  - INDOOR AQUATIC CENTER
  - SKY LOUNGE
  - PRIVATE ROOFTOP HELIPAD
  - SECURE ON-SITE PARKING
- SERVICES**
- ON-SITE MANAGEMENT PERSONNEL
  - CONCIERGE
  - ON-SITE SECURITY PERSONNEL
  - VALET PARKING

ORAL REPRESENTATIONS CANNOT BE RELIED UPON AS CORRECTLY STATING REPRESENTATIONS OF THE DEVELOPER. FOR CORRECT REPRESENTATIONS, MAKE REFERENCE TO THIS BROCHURE AND TO THE DOCUMENTS REQUIRED BY SECTION 718.503, FLORIDA STATUTES, TO BE FURNISHED BY A DEVELOPER TO A BUYER OR LESSEE.

Use and operation of the helipad are conditioned upon obtaining FAA and other governmental approvals. Approval has not yet been obtained. No assurance can be given about whether the approvals can be obtained, and/or if so, the timing of same. Stated dimensions are measured to the exterior boundaries of the exterior walls and the centerline of interior demising walls and in fact vary from the dimensions that would be determined by using the description and definition of the "Unit" set forth in the Declaration (which generally only includes the interior airspace between the perimeter walls and excludes interior structural components). Additionally, measurements of rooms set forth on any floor plan are generally taken at the greatest points of each given room (as if the room were a perfect rectangle), without regard for any cutouts. Accordingly, the area of the actual room will typically be smaller than the product obtained by multiplying the stated length times width. All dimensions are approximate, and all floor plans and development plans are subject to change. This is not intended to be an offer to sell, or solicitation to buy, condominium units in any other jurisdiction where prohibited by law, and your eligibility for purchase will depend upon your state of residency. This offering is made only by the prospectus for the condominium and no statement should be relied upon if not made in the prospectus. The sketches, renderings, graphic materials, plans, specifications, terms, conditions and statements contained in this brochure are proposed only, and the Developer reserves the right to modify, revise or withdraw any or all of same in its sole discretion and without prior notice. These drawings and depictions are conceptual only and are for the convenience of reference. They should not be relied upon as representations, express or implied, of the final detail of the building, the residences or the amenities. The developer expressly reserves the right to make modifications, revisions, and changes it deems desirable in its sole and absolute discretion. All depictions of furnishings, finishes, appliances, counters, soffits, floor coverings and other matters of detail, including, without limitation, items of finish and decoration, are conceptual only and are not necessarily included in each Unit. Consult your Agreement and the prospectus for the items included with the Unit. The photographs contained in this brochure may be stock photography or have been taken off-site and are used to depict the spirit of the lifestyles to be achieved rather than any that may exist or that may be proposed, and are merely intended as illustrations of the activities and concepts depicted therein.



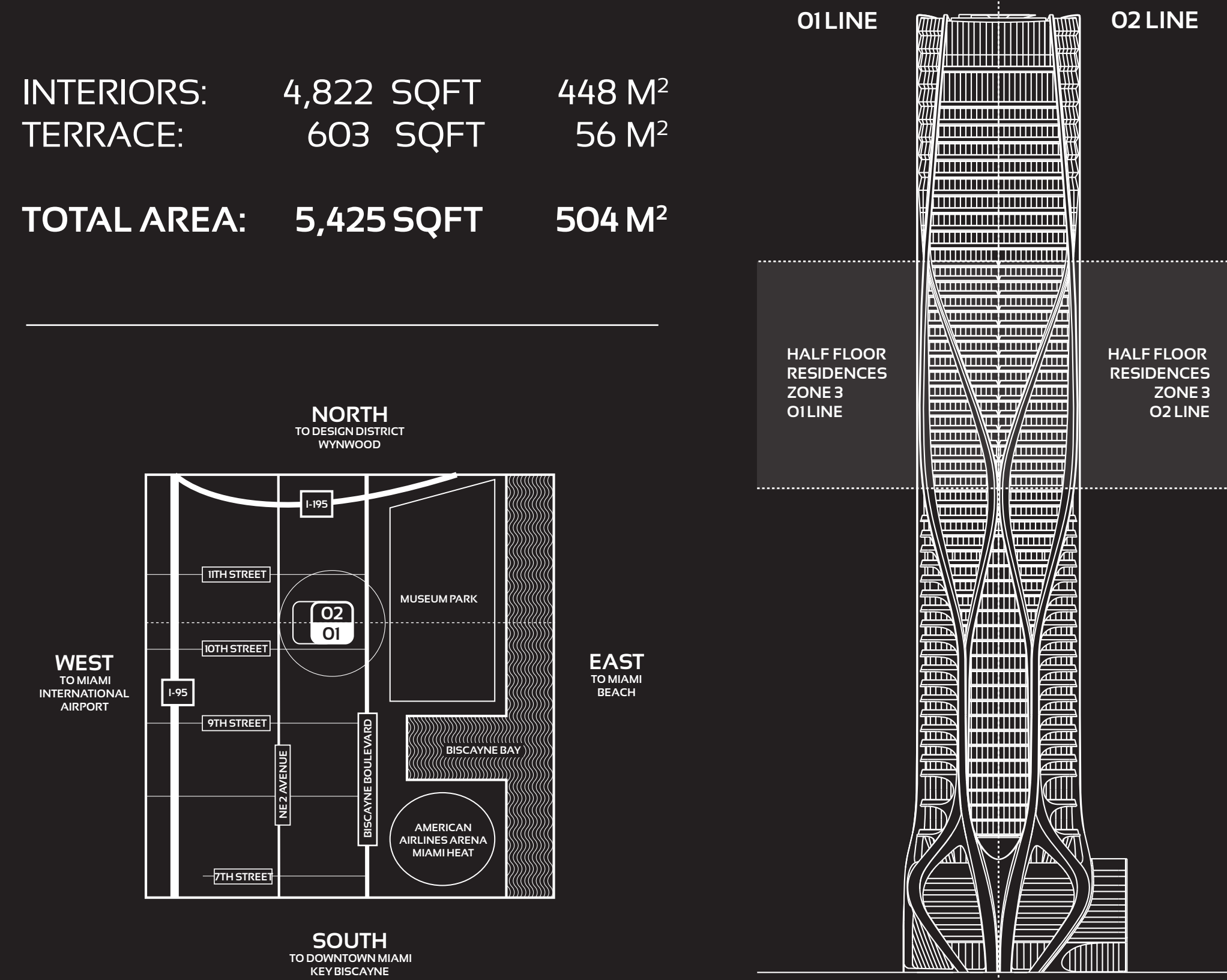
# ONE THOUSAND MUSEUM

BY ZAHA HADID ARCHITECTS

## HALF FLOOR RESIDENCES - ZONE 3 - LEVELS 34-49

### 4 BEDROOM - 5.5 BATHROOM

INTERIORS: 4,822 SQFT 448 M<sup>2</sup>  
 TERRACE: 603 SQFT 56 M<sup>2</sup>  
 TOTAL AREA: 5,425 SQFT 504 M<sup>2</sup>

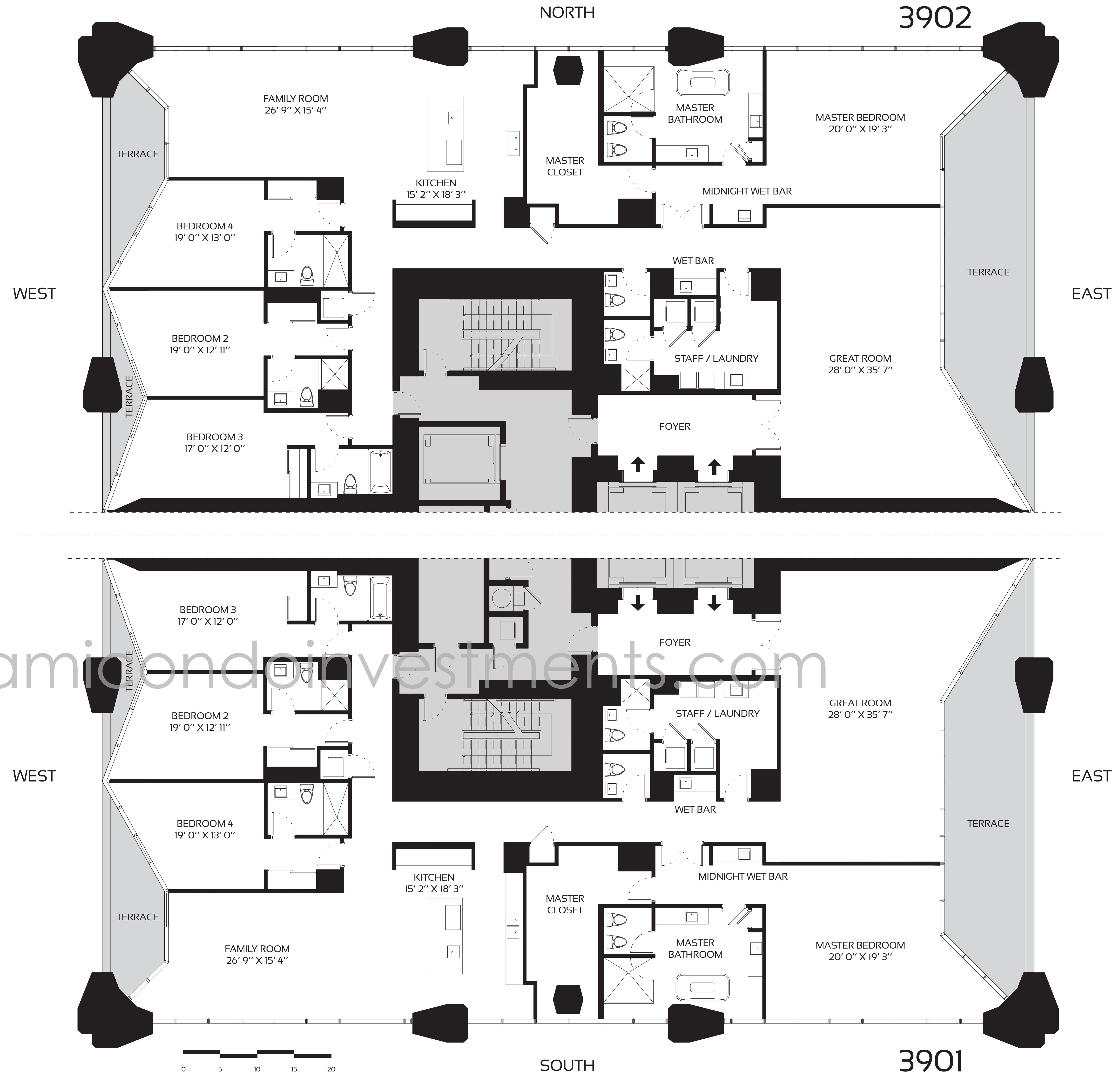


- TOWER FEATURES**
- ARCHITECTURE AND AMENITY SPACES DESIGNED BY ZAHA HADID ARCHITECTS
  - LANDSCAPE ARCHITECTURE BY ENZO ANGELINI
  - MUSEUM-QUALITY INTERIOR AND EXTERIOR ILLUMINATION
  - AMENITY SPACE SCENTING CRAFTED BY 12.29 OLFACTORY CONSULTANTS
  - FUNCTIONALLY INTEGRATED SECURITY AND TECHNOLOGY PROGRAM
- RESIDENTIAL FEATURES**
- ESTATE-SIZE HALF-FLOOR, FULL-FLOOR, AND DUPLEX RESIDENCES
  - MULTIPLE OVERSIZED BALCONIES IN EVERY RESIDENCE
  - CEILING HEIGHTS TO 10 FEET IN MAIN LIVING AREAS
  - FLOOR-TO-CEILING WINDOW WALLS
  - CUSTOMIZED ILLUMINATION DESIGNED BY ULI + FRIENDS
  - INTEGRATED HOME AUTOMATION BY CRESTRON
  - CUSTOM KITCHENS BY GATTO CUCINE WITH GAGGENAU AND SUB-ZERO APPLIANCES

- AMENITIES**
- OUTDOOR POOL & RECREATIONAL TERRACE
  - FITNESS CENTER
  - SPA
  - INDOOR AQUATIC CENTER
  - SKY LOUNGE
  - PRIVATE ROOFTOP HELIPAD
  - SECURE ON-SITE PARKING
- SERVICES**
- ON-SITE MANAGEMENT PERSONNEL
  - CONCIERGE
  - ON-SITE SECURITY PERSONNEL
  - VALET PARKING

ORAL REPRESENTATIONS CANNOT BE RELIED UPON AS CORRECTLY STATING REPRESENTATIONS OF THE DEVELOPER. FOR CORRECT REPRESENTATIONS, MAKE REFERENCE TO THIS BROCHURE AND TO THE DOCUMENTS REQUIRED BY SECTION 718.503, FLORIDA STATUTES, TO BE FURNISHED BY A DEVELOPER TO A BUYER OR LESSEE.

Use and operation of the helipad are conditioned upon obtaining FAA and other governmental approvals. Approval has not yet been obtained. No assurance can be given about whether the approvals can be obtained, and/or if so, the timing of same. Stated dimensions are measured to the exterior boundaries of the exterior walls and the centerline of interior demising walls and in fact vary from the dimensions that would be determined by using the description and definition of the "Unit" set forth in the Declaration (which generally only includes the interior airspace between the perimeter walls and excludes interior structural components). Additionally, measurements of rooms set forth on any floor plan are generally taken at the greatest points of each given room (as if the room were a perfect rectangle), without regard for any cutouts. Accordingly, the area of the actual room will typically be smaller than the product obtained by multiplying the stated length times width. All dimensions are approximate, and all floor plans and development plans are subject to change. This is not intended to be an offer to sell, or solicitation to buy, condominium units in any other jurisdiction where prohibited by law, and your eligibility for purchase will depend upon your state of residency. This offering is made only by the prospectus for the condominium and no statement should be relied upon if not made in the prospectus. The sketches, renderings, graphic materials, plans, specifications, terms, conditions and statements contained in this brochure are proposed only, and the Developer reserves the right to modify, revise or withdraw any or all of same in its sole discretion and without prior notice. These drawings and depictions are conceptual only and are for the convenience of reference. They should not be relied upon as representations, express or implied, of the final detail of the building, the residences or the amenities. The developer expressly reserves the right to make modifications, revisions, and changes it deems desirable in its sole and absolute discretion. All depictions of furnishings, finishes, appliances, counters, soffits, floor coverings and other matters of detail, including, without limitation, items of finish and decoration, are conceptual only and are not necessarily included in each Unit. Consult your Agreement and the prospectus for the items included with the Unit. The photographs contained in this brochure may be stock photography or have been taken off-site and are used to depict the spirit of the lifestyles to be achieved rather than any that may exist or that may be proposed, and are merely intended as illustrations of the activities and concepts depicted therein.



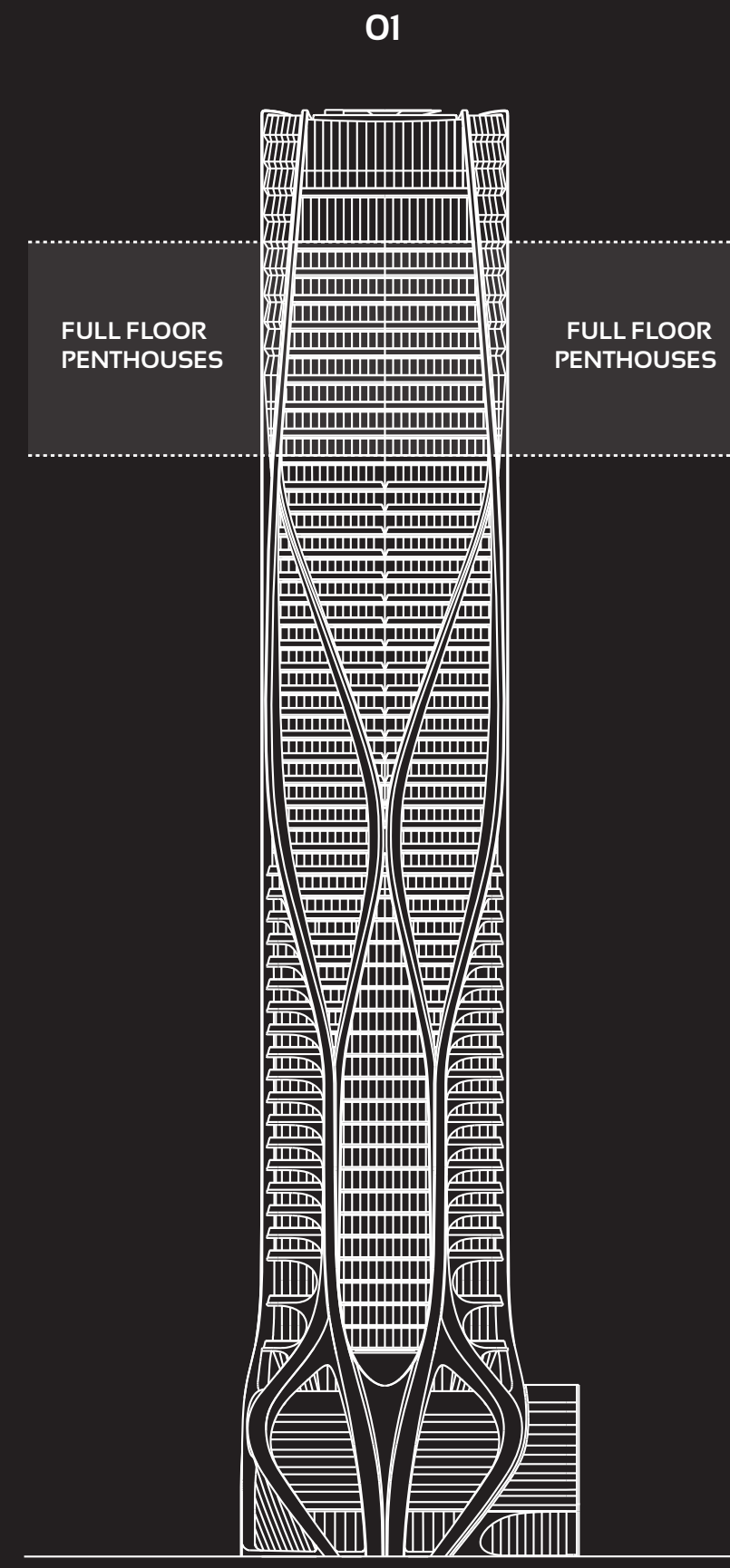
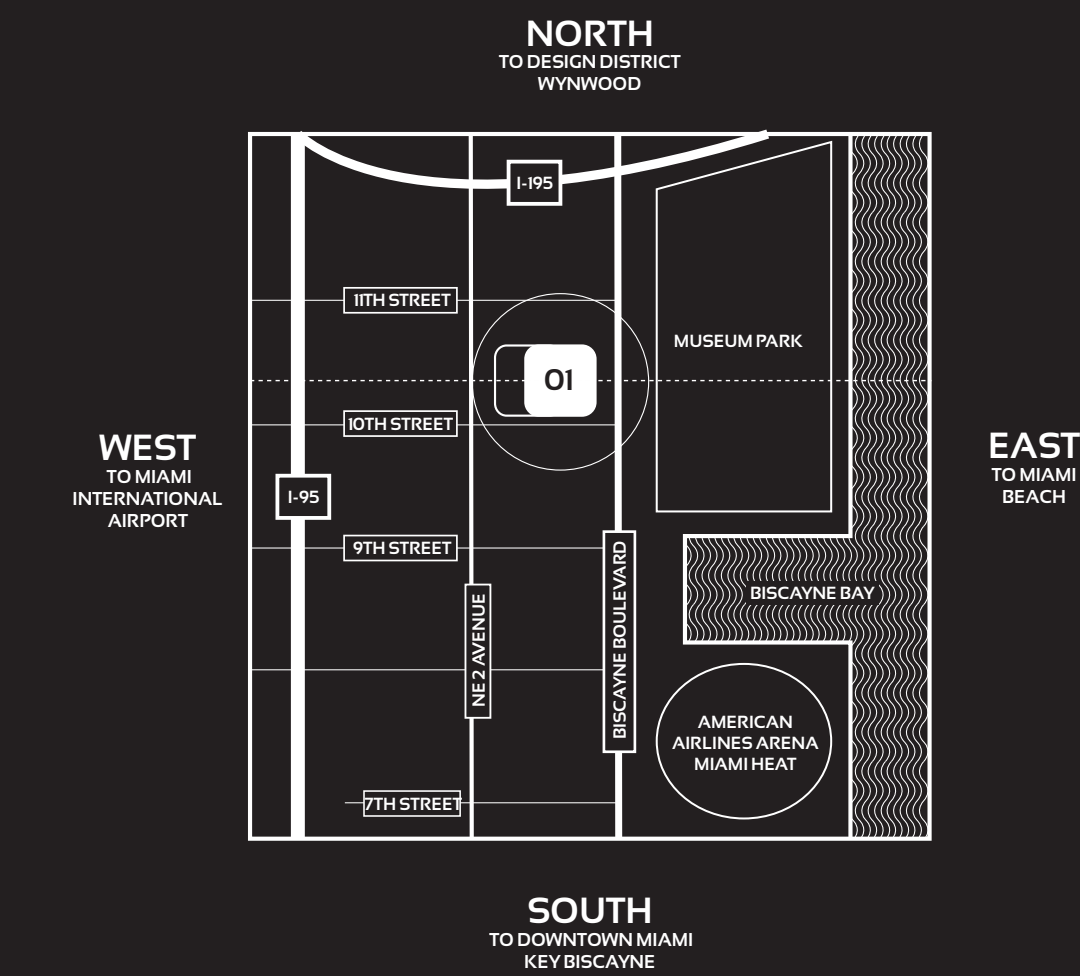
# ONE THOUSAND MUSEUM

BY ZAHA HADID ARCHITECTS

## FULL FLOOR PENTHOUSES - ZONE 4 - LEVELS 50-57

### 5 BEDROOM - 6.5 BATHROOM

INTERIORS:	9,910 SQFT	921 M <sup>2</sup>
TERRACE:	1,216 SQFT	113 M <sup>2</sup>
<b>TOTAL AREA:</b>	<b>11,126 SQFT</b>	<b>1,034 M<sup>2</sup></b>



#### TOWER FEATURES

- ARCHITECTURE AND AMENITY SPACES DESIGNED BY ZAHA HADID ARCHITECTS
- LANDSCAPE ARCHITECTURE BY ENZO ANGILERI
- MUSEUM-QUALITY INTERIOR AND EXTERIOR ILLUMINATION
- AMENITY SPACE SCENTING CRAFTED BY 12.29 OLFACTORY CONSULTANTS
- FUNCTIONALLY INTEGRATED SECURITY AND TECHNOLOGY PROGRAM

#### RESIDENTIAL FEATURES

- ESTATE-SIZE HALF-FLOOR, FULL-FLOOR, AND DUPLEX RESIDENCES
- MULTIPLE OVERSIZED BALCONIES IN EVERY RESIDENCE
- CEILING HEIGHTS TO 12 FEET IN MAIN LIVING AREAS
- FLOOR-TO-CEILING WINDOW WALLS
- CUSTOMIZED ILLUMINATION DESIGNED BY ULI + FRIENDS
- INTEGRATED HOME AUTOMATION BY CRESTRON
- CUSTOM KITCHENS BY GATTO CUCINE WITH GAGGENAU AND SUB-ZERO APPLIANCES

#### AMENITIES

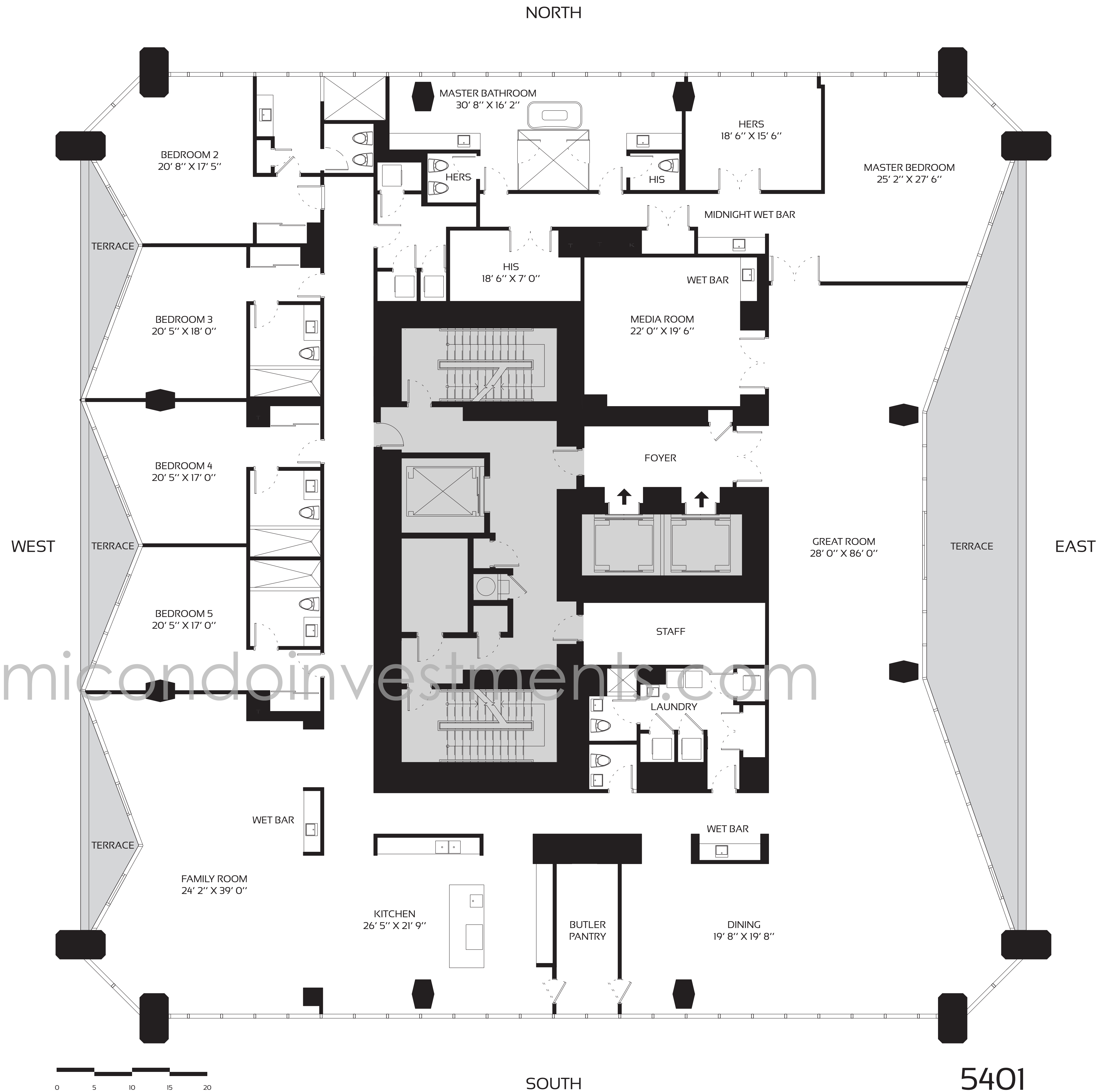
- OUTDOOR POOL & RECREATIONAL TERRACE
- FITNESS CENTER
- SPA
- INDOOR AQUATIC CENTER
- SKY LOUNGE
- PRIVATE ROOFTOP HELIPAD
- SECURE ON-SITE PARKING

#### SERVICES

- ON-SITE MANAGEMENT PERSONNEL
- CONCIERGE
- ON-SITE SECURITY PERSONNEL
- VALET PARKING

ORAL REPRESENTATIONS CANNOT BE RELIED UPON AS CORRECTLY STATING REPRESENTATIONS OF THE DEVELOPER. FOR CORRECT REPRESENTATIONS, MAKE REFERENCE TO THIS BROCHURE AND TO THE DOCUMENTS REQUIRED BY SECTION 718.503, FLORIDA STATUTES, TO BE FURNISHED BY A DEVELOPER TO A BUYER OR LESSEE.

Use and operation of the helipad are conditioned upon obtaining FAA and other governmental approvals. Approval has not yet been obtained. No assurance can be given about whether the approvals can be obtained, and/or if so, the timing of same. Stated dimensions are measured to the exterior boundaries of the exterior walls and the centerline of interior demising walls and in fact vary from the dimensions that would be determined by using the description and definition of the "Unit" set forth in the Declaration (which generally only includes the interior airspace between the perimeter walls and excludes interior structural components). Additionally, measurements of rooms set forth on any floor plan are generally taken at the greatest points of each given room (as if the room were a perfect rectangle), without regard for any cutouts. Accordingly, the area of the actual room will typically be smaller than the product obtained by multiplying the stated length times width. All dimensions are approximate, and all floor plans and development plans are subject to change. This is not intended to be an offer to sell, or solicitation to buy, condominium units in any other jurisdiction where prohibited by law, and your eligibility for purchase will depend upon your state of residency. This offering is made only by the prospectus for the condominium and no statement should be relied upon if not made in the prospectus. The sketches, renderings, graphic materials, plans, specifications, terms, conditions and statements contained in this brochure are proposed only, and the Developer reserves the right to modify, revise or withdraw any or all of same in its sole discretion and without prior notice. These drawings and depictions are conceptual only and are for the convenience of reference. They should not be relied upon as representations, express or implied, of the final detail of the building, the residences or the amenities. The developer expressly reserves the right to make modifications, revisions, and changes it deems desirable in its sole and absolute discretion. All depictions of furnishings, finishes, appliances, counters, soffits, floor coverings and other matters of detail, including, without limitation, items of finish and decoration, are conceptual only and are not necessarily included in each Unit. Consult your Agreement and the prospectus for the items included with the Unit. The photographs contained in this brochure may be stock photography or have been taken off-site and are used to depict the spirit of the lifestyles to be achieved rather than any that may exist or that may be proposed, and are merely intended as illustrations of the activities and concepts depicted therein.



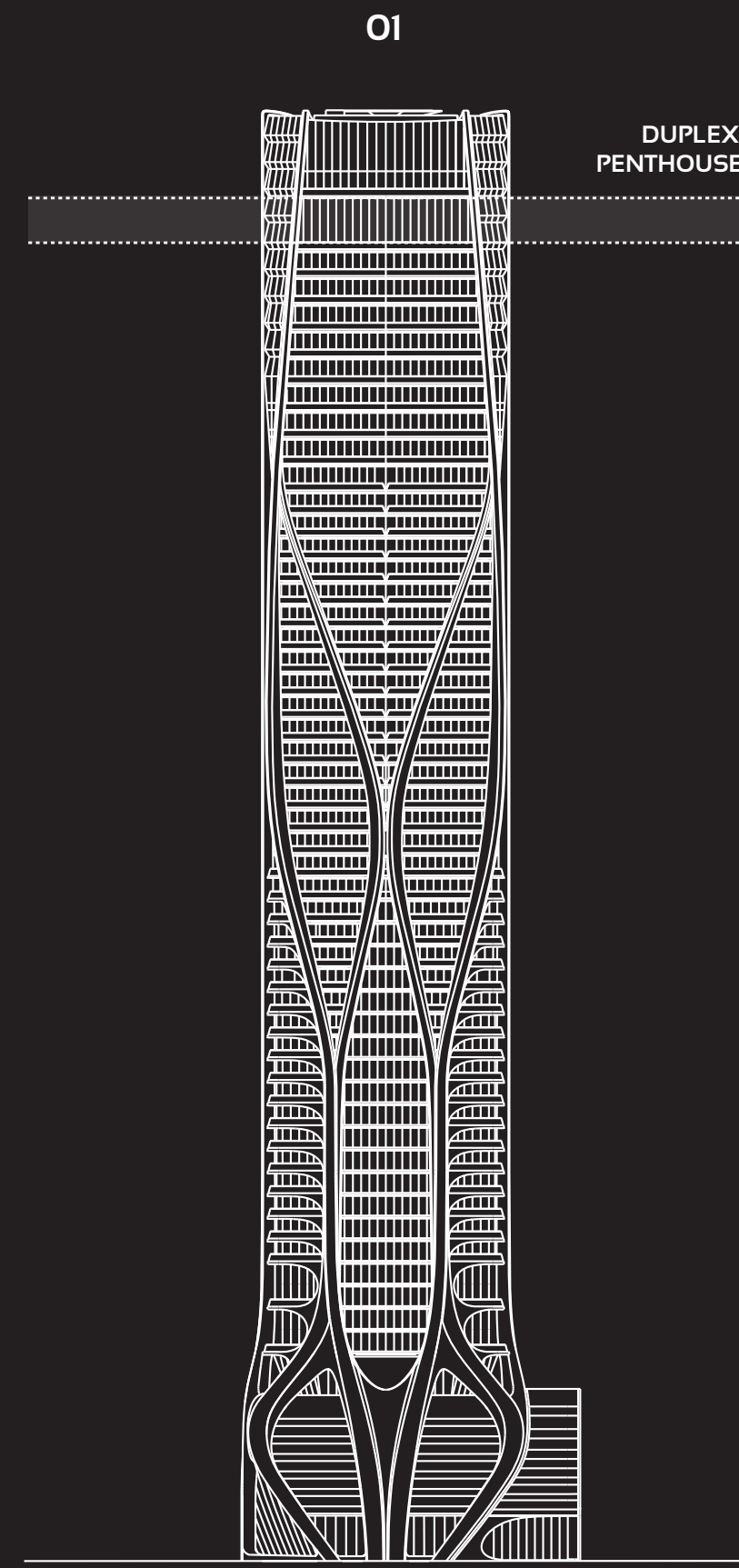
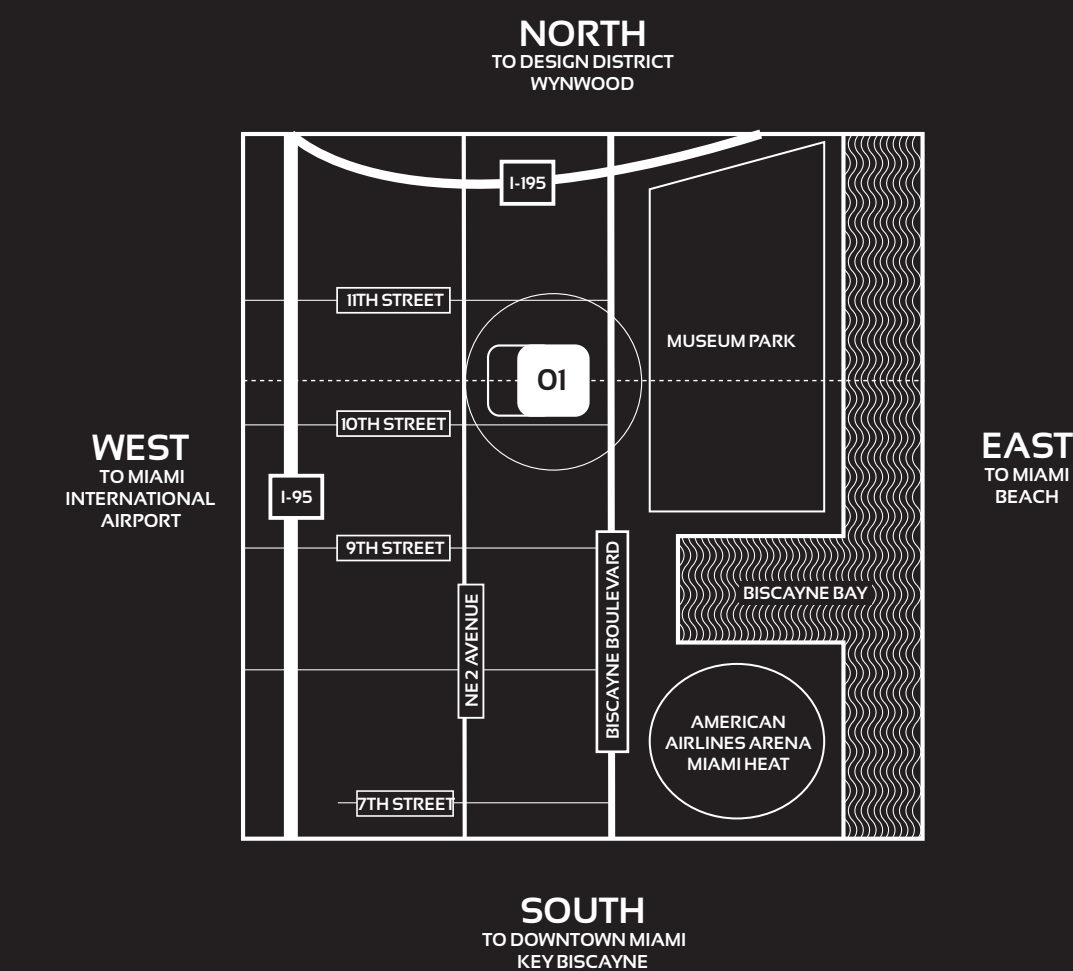
# ONE THOUSAND MUSEUM

BY ZAHA HADID ARCHITECTS

## DUPLEX PENTHOUSE 5801 - LOWER LEVEL - LEVEL 58

6 BEDROOM - 6 FULL + 2 HALF BATHROOM

INTERIORS: 15,207 SQFT 1,412 M<sup>2</sup>  
 TERRACE: 1,013 SQFT 94 M<sup>2</sup>  
 TOTAL AREA: 16,220 SQFT 1,506 M<sup>2</sup>



### TOWER FEATURES

- ARCHITECTURE AND AMENITY SPACES DESIGNED BY ZAHA HADID ARCHITECTS
- LANDSCAPE ARCHITECTURE BY ENZO ANGELINI
- MUSEUM-QUALITY INTERIOR AND EXTERIOR ILLUMINATION
- AMENITY SPACE SCENTING CRAFTED BY 12.29 OLFACTORY CONSULTANTS
- FUNCTIONALLY INTEGRATED SECURITY AND TECHNOLOGY PROGRAM

### RESIDENTIAL FEATURES

- ESTATE-SIZE HALF-FLOOR, FULL-FLOOR, AND DUPLEX RESIDENCES
- MULTIPLE OVERSIZED BALCONIES IN EVERY RESIDENCE
- CEILING HEIGHTS FROM 10 TO 20 FEET IN MAIN LIVING AREAS
- FLOOR-TO-CEILING WINDOW WALLS
- CUSTOMIZED ILLUMINATION DESIGNED BY ULI + FRIENDS
- INTEGRATED HOME AUTOMATION BY CRESTRON
- CUSTOM KITCHENS BY GATTO CUCINE WITH GAGGENAU AND SUB-ZERO APPLIANCES

### AMENITIES

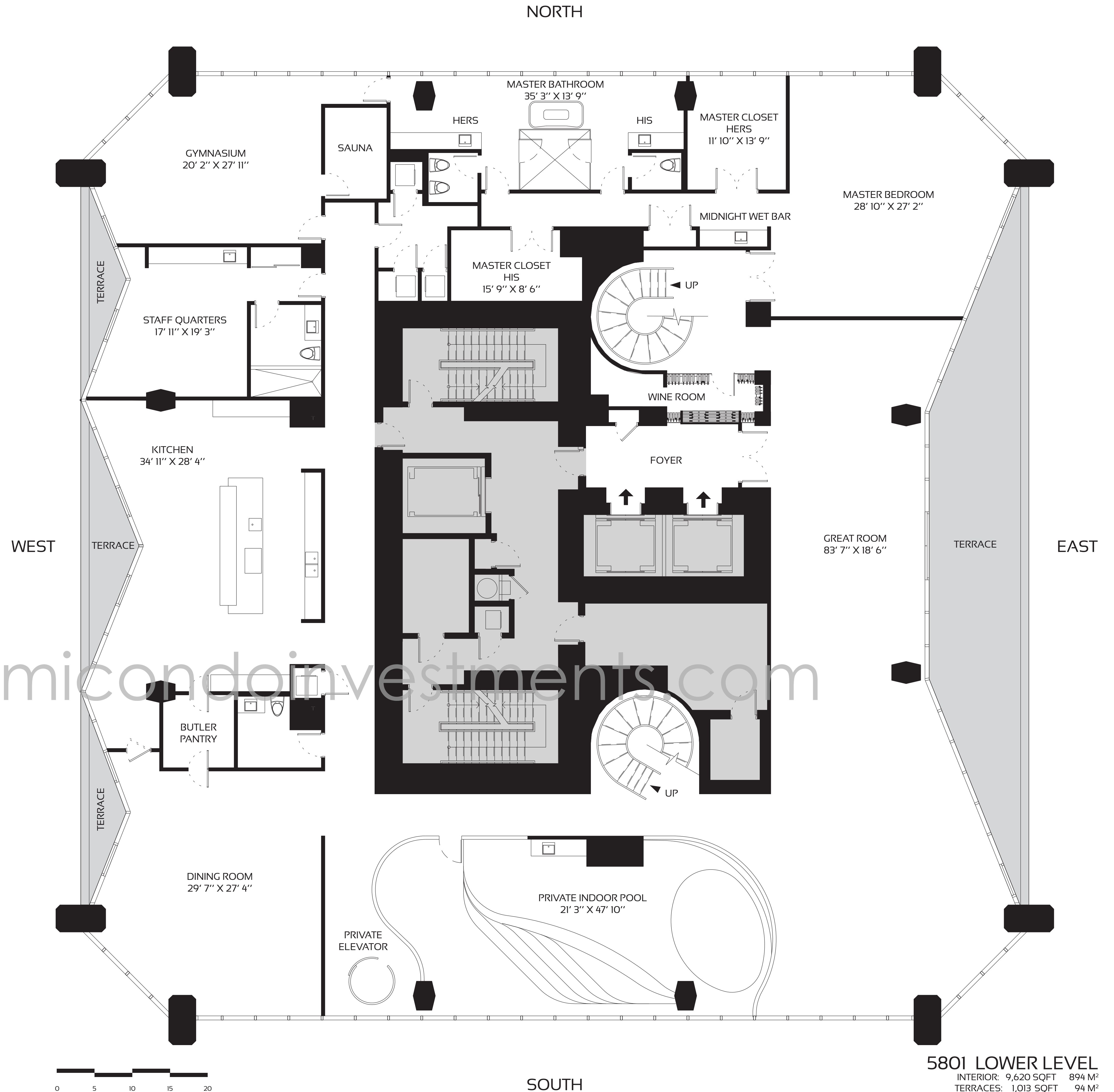
- OUTDOOR POOL & RECREATIONAL TERRACE
- FITNESS CENTER
- SPA
- INDOOR AQUATIC CENTER
- SKY LOUNGE
- PRIVATE ROOFTOP HELIPAD
- SECURE ON-SITE PARKING

### SERVICES

- ON-SITE MANAGEMENT PERSONNEL
- CONCIERGE
- ON-SITE SECURITY PERSONNEL
- VALET PARKING

ORAL REPRESENTATIONS CANNOT BE RELIED UPON AS CORRECTLY STATING REPRESENTATIONS OF THE DEVELOPER. FOR CORRECT REPRESENTATIONS, MAKE REFERENCE TO THIS BROCHURE AND TO THE DOCUMENTS REQUIRED BY SECTION 718.503, FLORIDA STATUTES, TO BE FURNISHED BY A DEVELOPER TO A BUYER OR LESSEE.

Use and operation of the helipad are conditioned upon obtaining FAA and other governmental approvals. Approval has not yet been obtained. No assurance can be given about whether the approvals can be obtained, and/or if so, the timing of same. Stated dimensions are measured to the exterior boundaries of the exterior walls and the centerline of interior demising walls and in fact vary from the dimensions that would be determined by using the description and definition of the "Unit" set forth in the Declaration (which generally only includes the interior airspace between the perimeter walls and excludes interior structural components). Additionally, measurements of rooms set forth on any floor plan are generally taken at the greatest points of each given room (as if the room were a perfect rectangle), without regard for any cutouts. Accordingly, the area of the actual room will typically be smaller than the product obtained by multiplying the stated length times width. All dimensions are approximate, and all floor plans and development plans are subject to change. This is not intended to be an offer to sell, or solicitation to buy, condominium units in any other jurisdiction where prohibited by law, and your eligibility for purchase will depend upon your state of residency. This offering is made only by the prospectus for the condominium and no statement should be relied upon if not made in the prospectus. The sketches, renderings, graphic materials, plans, specifications, terms, conditions and statements contained in this brochure are proposed only, and the Developer reserves the right to modify, revise or withdraw any or all of same in its sole discretion and without prior notice. These drawings and depictions are conceptual only and are for the convenience of reference. They should not be relied upon as representations, express or implied, of the final detail of the building, the residences or the amenities. The developer expressly reserves the right to make modifications, revisions, and changes it deems desirable in its sole and absolute discretion. All depictions of furnishings, finishes, appliances, counters, soffits, floor coverings and other matters of detail, including, without limitation, items of finish and decoration, are conceptual only and are not necessarily included in each Unit. Consult your Agreement and the prospectus for the items included with the Unit. The photographs contained in this brochure may be stock photography or have been taken off-site and are used to depict the spirit of the lifestyles to be achieved rather than any that may exist or that may be proposed, and are merely intended as illustrations of the activities and concepts depicted therein.



**5801 LOWER LEVEL**  
 INTERIOR: 9,620 SQFT 894 M<sup>2</sup>  
 TERRACES: 1,013 SQFT 94 M<sup>2</sup>

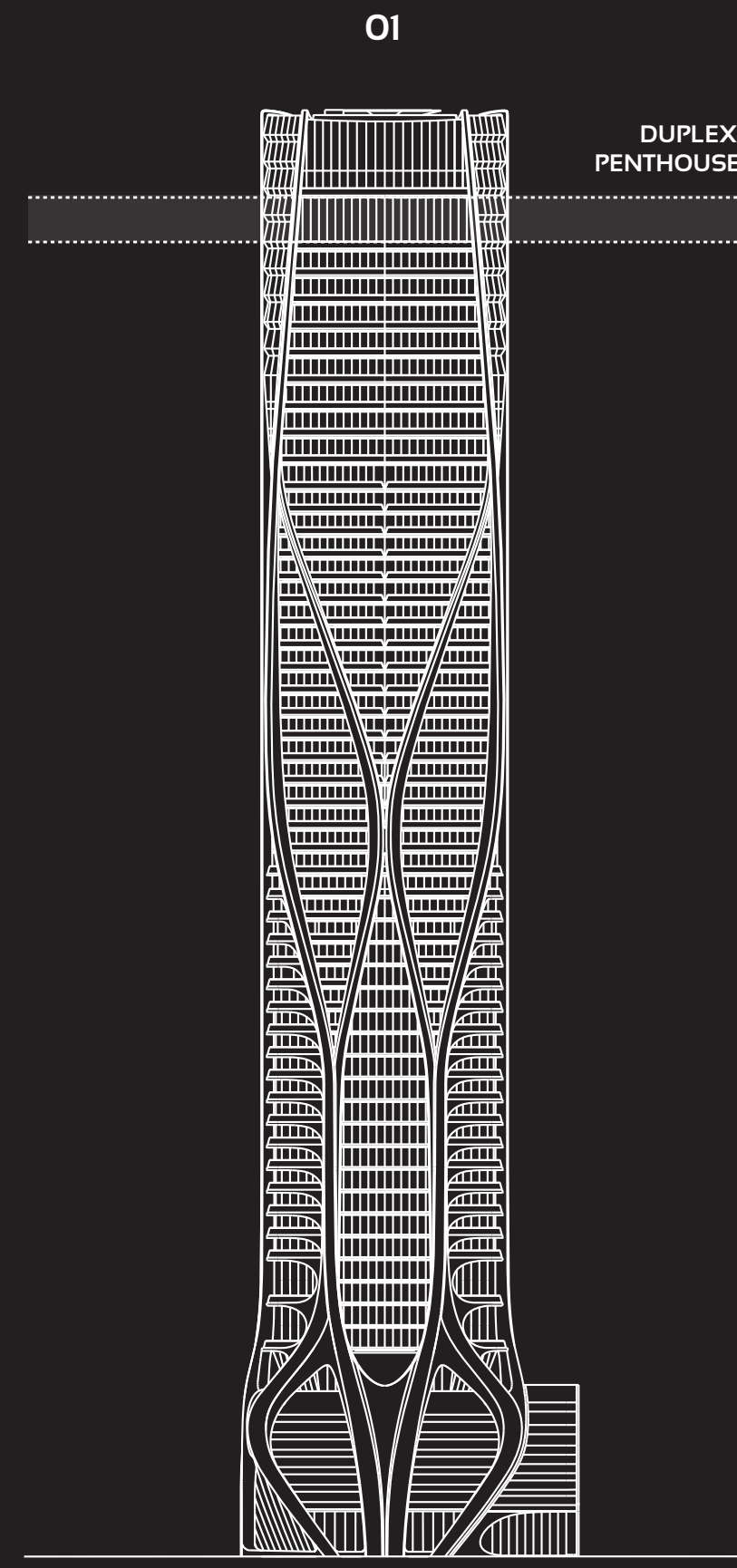
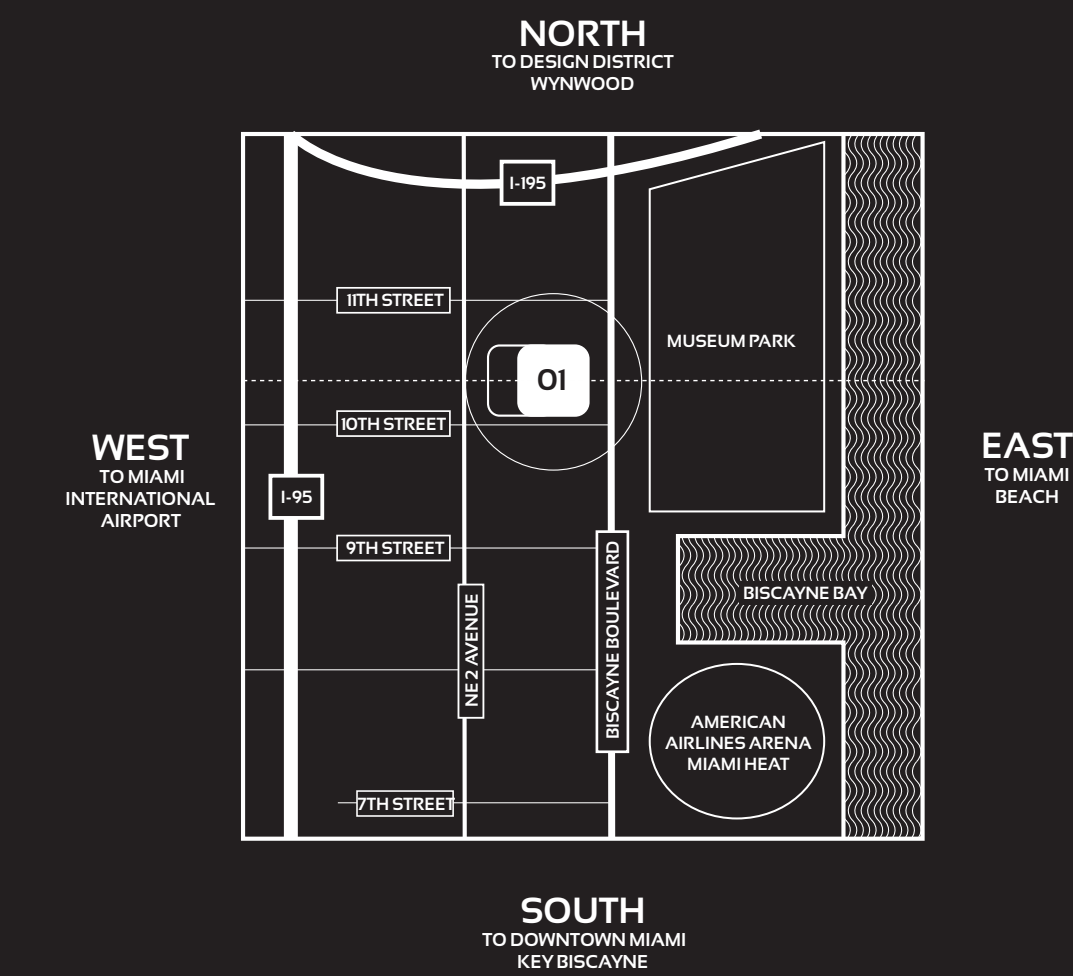
# ONE THOUSAND MUSEUM

BY ZAHA HADID ARCHITECTS

## DUPLEX PENTHOUSE 5801- UPPER LEVEL- LEVEL 59

6 BEDROOM - 6 FULL + 2 HALF BATHROOM

INTERIORS: 15,207 SQFT 1,412 M<sup>2</sup>  
 TERRACE: 1,013 SQFT 94 M<sup>2</sup>  
 TOTAL AREA: 16,220 SQFT 1,506 M<sup>2</sup>



### TOWER FEATURES

- ARCHITECTURE AND AMENITY SPACES DESIGNED BY ZAHA HADID ARCHITECTS
- LANDSCAPE ARCHITECTURE BY ENZO ANGELINI
- MUSEUM-QUALITY INTERIOR AND EXTERIOR ILLUMINATION
- AMENITY SPACE SCENTING CRAFTED BY 12.29 OLFACTORY CONSULTANTS
- FUNCTIONALLY INTEGRATED SECURITY AND TECHNOLOGY PROGRAM

### RESIDENTIAL FEATURES

- ESTATE-SIZE HALF-FLOOR, FULL-FLOOR, AND DUPLEX RESIDENCES
- MULTIPLE OVERSIZED BALCONIES IN EVERY RESIDENCE
- CEILING HEIGHTS FROM 10 TO 20 FEET IN MAIN LIVING AREAS
- FLOOR-TO-CEILING WINDOW WALLS
- CUSTOMIZED ILLUMINATION DESIGNED BY ULI + FRIENDS
- INTEGRATED HOME AUTOMATION BY CRESTRON
- CUSTOM KITCHENS BY GATTO CUCINE WITH GAGGENAU AND SUB-ZERO APPLIANCES

### AMENITIES

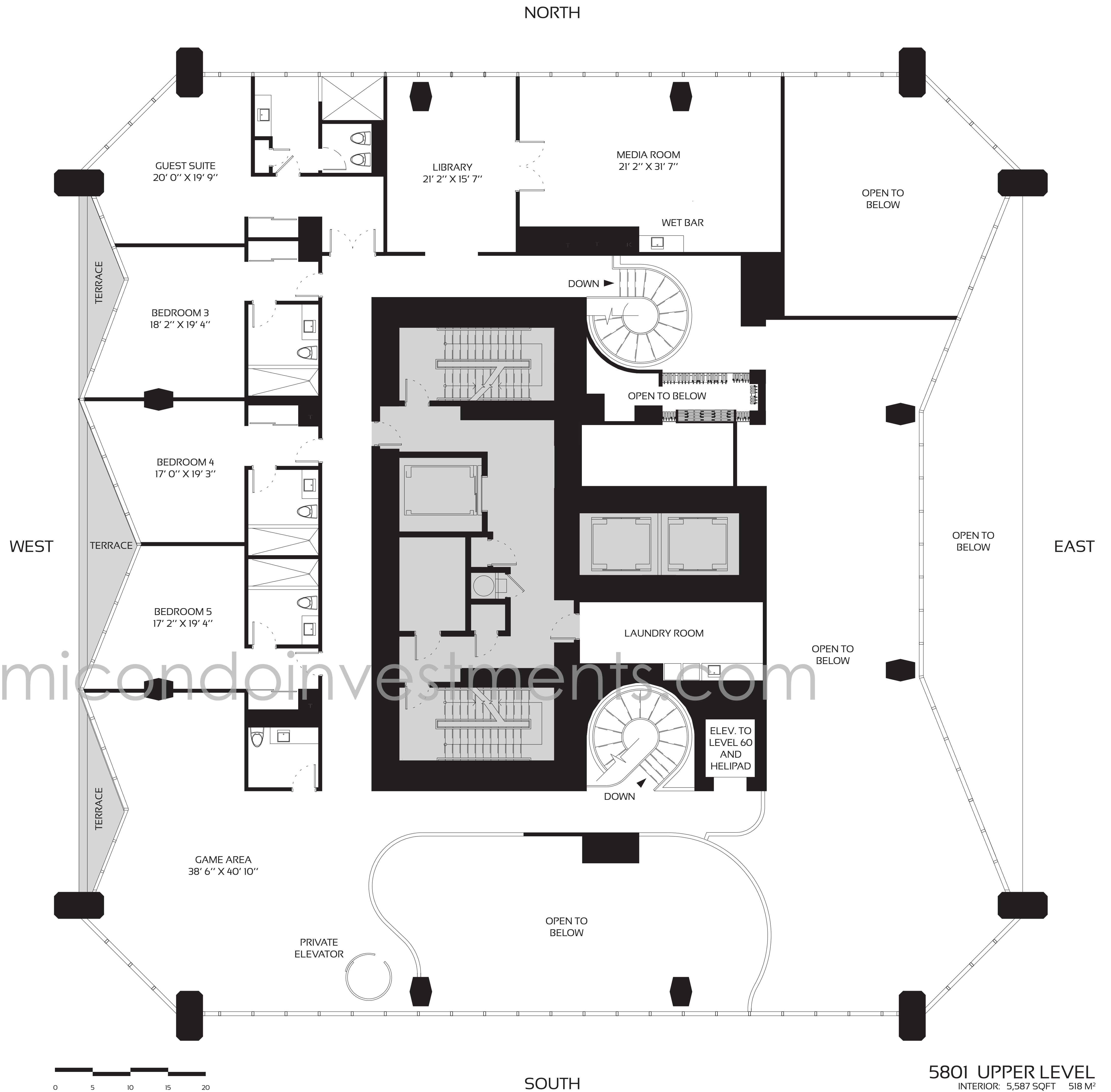
- OUTDOOR POOL & RECREATIONAL TERRACE
- FITNESS CENTER
- SPA
- INDOOR AQUATIC CENTER
- SKY LOUNGE
- PRIVATE ROOFTOP HELIPAD
- SECURE ON-SITE PARKING

### SERVICES

- ON-SITE MANAGEMENT PERSONNEL
- CONCIERGE
- ON-SITE SECURITY PERSONNEL
- VALET PARKING

ORAL REPRESENTATIONS CANNOT BE RELIED UPON AS CORRECTLY STATING REPRESENTATIONS OF THE DEVELOPER. FOR CORRECT REPRESENTATIONS, MAKE REFERENCE TO THIS BROCHURE AND TO THE DOCUMENTS REQUIRED BY SECTION 718.503, FLORIDA STATUTES, TO BE FURNISHED BY A DEVELOPER TO A BUYER OR LESSEE.

Use and operation of the helipad are conditioned upon obtaining FAA and other governmental approvals. Approval has not yet been obtained. No assurance can be given about whether the approvals can be obtained, and/or if so, the timing of same. Stated dimensions are measured to the exterior boundaries of the exterior walls and the centerline of interior demising walls and in fact may vary from the dimensions that would be determined by using the description and definition of the "Unit" set forth in the Declaration (which generally only includes the interior airspace between the perimeter walls and excludes interior structural components). Additionally, measurements of rooms set forth on any floor plan are generally taken at the greatest points of each given room (as if the room were a perfect rectangle), without regard for any cutouts. Accordingly, the area of the actual room will typically be smaller than the product obtained by multiplying the stated length times width. All dimensions are approximate, and all floor plans and development plans are subject to change. This is not intended to be an offer to sell, or solicitation to buy, condominium units in any other jurisdiction where prohibited by law, and your eligibility for purchase will depend upon your state of residency. This offering is made only by the prospectus for the condominium and no statement should be relied upon if not made in the prospectus. The sketches, renderings, graphic materials, plans, specifications, terms, conditions and statements contained in this brochure are proposed only, and the Developer reserves the right to modify, revise or withdraw any or all of same in its sole discretion and without prior notice. These drawings and depictions are conceptual only and are for the convenience of reference. They should not be relied upon as representations, express or implied, of the final detail of the building, the residences or the amenities. The developer expressly reserves the right to make modifications, revisions, and changes it deems desirable in its sole and absolute discretion. All depictions of furnishings, finishes, appliances, counters, soffits, floor coverings and other matters of detail, including, without limitation, items of finish and decoration, are conceptual only and are not necessarily included in each Unit. Consult your Agreement and the prospectus for the items included with the Unit. The photographs contained in this brochure may be stock photography or have been taken off-site and are used to depict the spirit of the lifestyles to be achieved rather than any that may exist or that may be proposed, and are merely intended as illustrations of the activities and concepts depicted therein.



5801 UPPER LEVEL  
 INTERIOR: 5,587 SQFT 518 M<sup>2</sup>