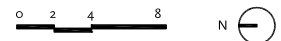
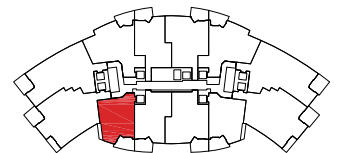
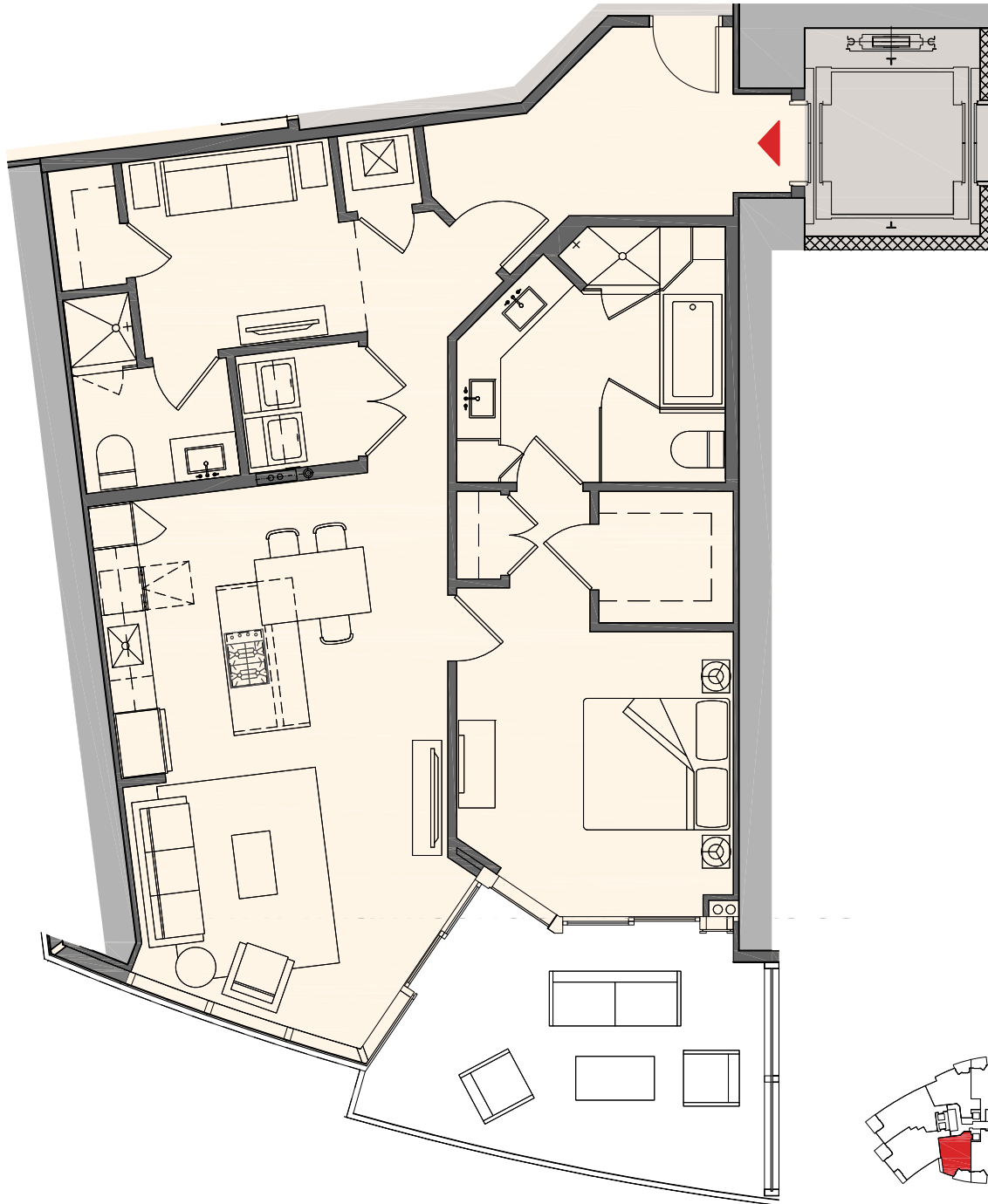


Residence A1

1 Bedroom + Den | 2 Bath

Total:	1,491 sq. ft.	138 m <sup>2</sup>
Interior:	1,294 sq. ft.	120 m <sup>2</sup>
Outdoor:	197 sq. ft.	18 m <sup>2</sup>

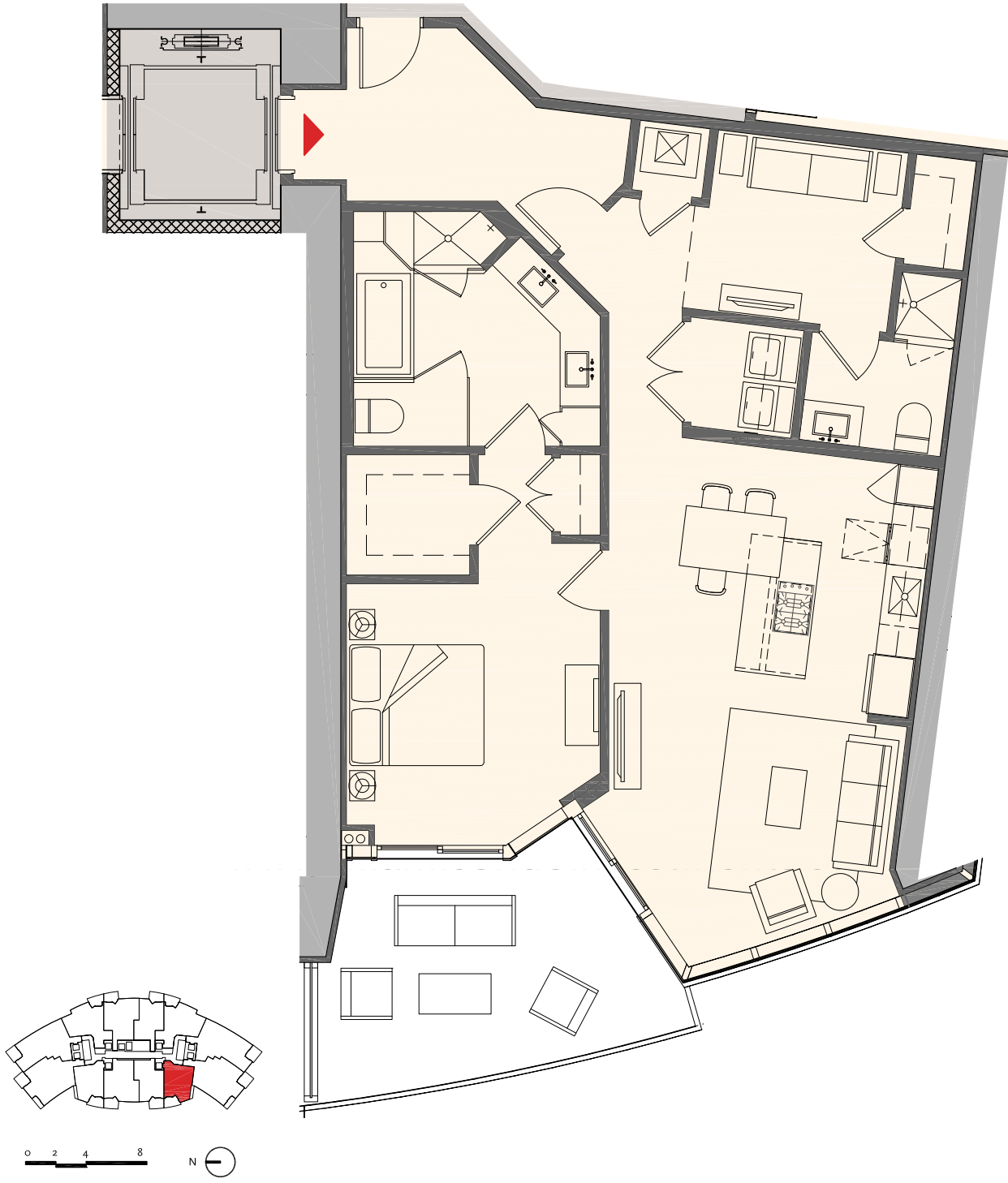


These drawings are conceptual only and are for the convenience of reference. They should not be relied upon as representations, express or implied, of the final detail of the residences. Units shown are examples of unit types and may not depict actual units. Stated square footages are ranges for a particular unit type and are measured to the exterior boundaries of the exterior walls and the centerline of interior demising walls and in fact vary from the area that would be determined by using the description and definition of the "Unit" set forth in the Declaration (which generally only includes the interior airspace between the perimeter walls and excludes interior structural components).

## Residence A2

1 Bedroom + Den | 2 Bath

Total:	1,491 sq. ft.	138 m <sup>2</sup>
Interior:	1,294 sq. ft.	120 m <sup>2</sup>
Outdoor:	197 sq. ft.	18 m <sup>2</sup>



These drawings are conceptual only and are for the convenience of reference. They should not be relied upon as representations, express or implied, of the final detail of the residences. Units shown are examples of unit types and may not depict actual units. Stated square footages are ranges for a particular unit type and are measured to the exterior boundaries of the exterior walls and the centerline of interior demising walls and in fact vary from the area that would be determined by using the description and definition of the "Unit" set forth in the Declaration (which generally only includes the interior airspace between the perimeter walls and excludes interior structural components).

# PARAMOUNT

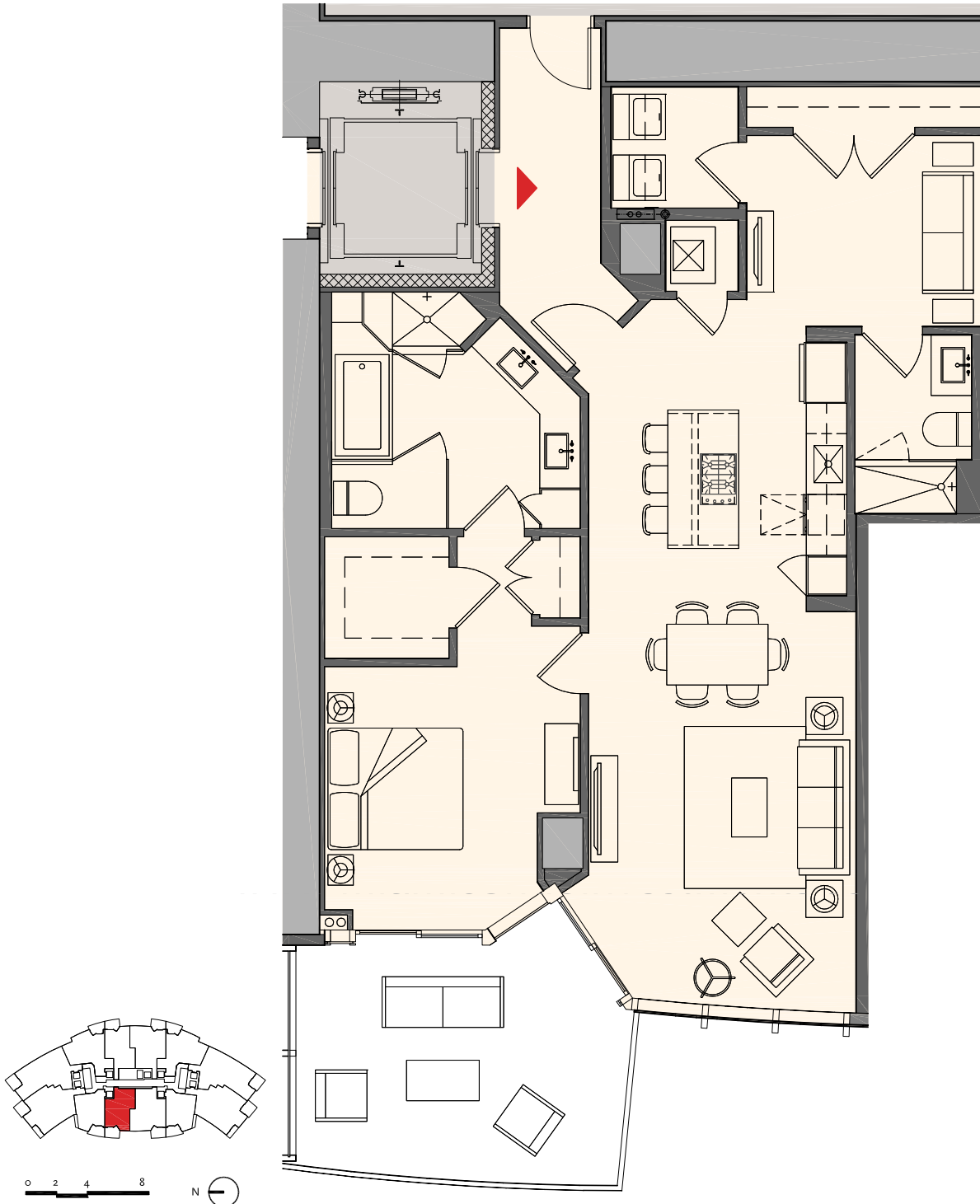
MIAMI WORLDCENTER



## Residence B1

## 1 Bedroom + Den | 2 Bath

Total:	1,521 sq. ft.	141 m <sup>2</sup>
Interior:	1,318 sq. ft.	122 m <sup>2</sup>
Outdoor:	205 sq. ft.	19 m <sup>2</sup>

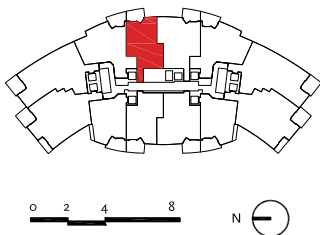
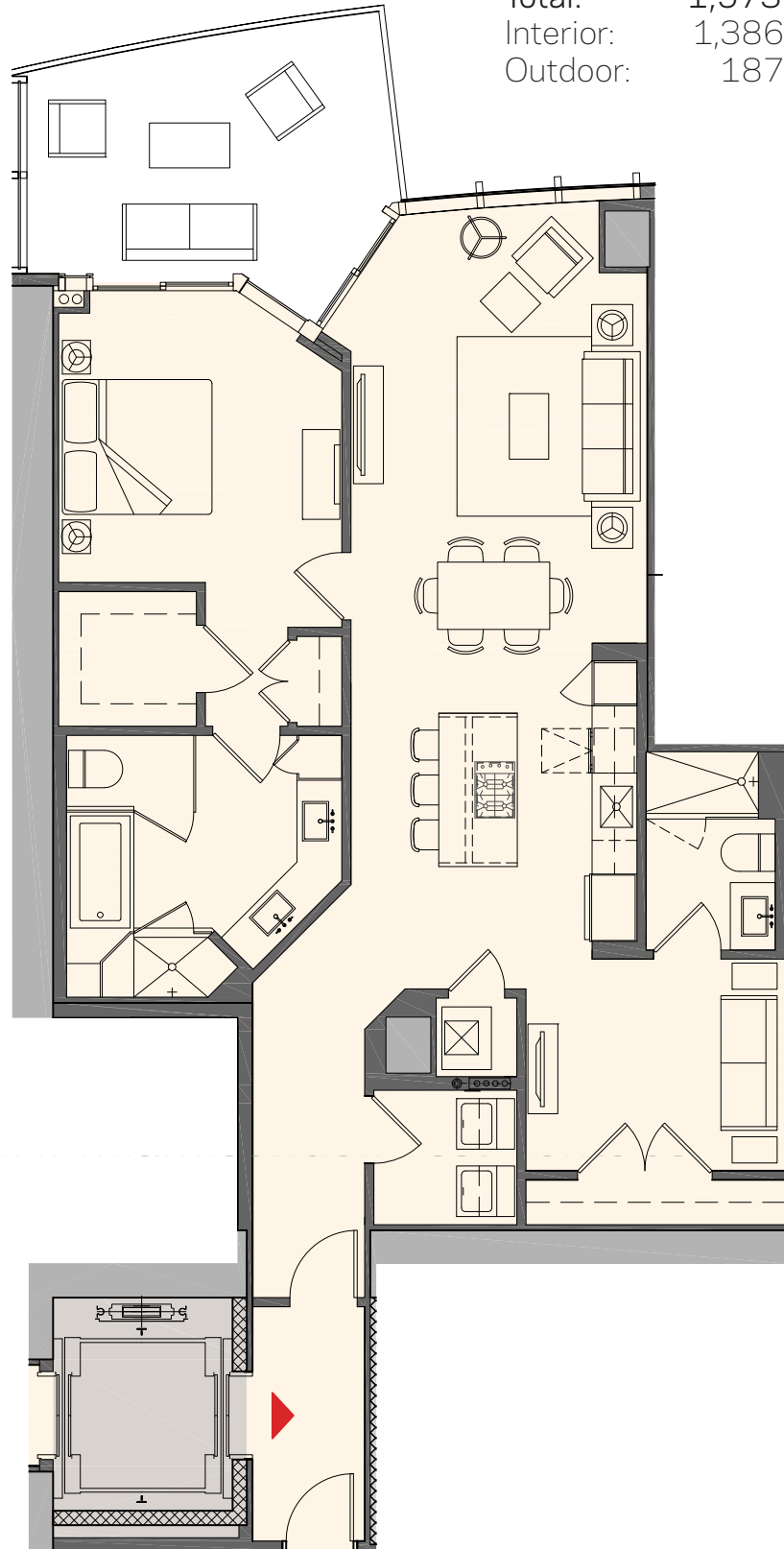


These drawings are conceptual only and are for the convenience of reference. They should not be relied upon as representations, express or implied, of the final detail of the residences. Units shown are examples of unit types and may not depict actual units. Stated square footages are ranges for a particular unit type and are measured to the exterior boundaries of the exterior walls and the centerline of interior demising walls and in fact vary from the area that would be determined by using the description and definition of the "Unit" set forth in the Declaration (which generally only includes the interior airspace between the perimeter walls and excludes interior structural components).

Residence B2

1 Bedroom + Den | 2 Bath

Total:	1,573 sq. ft.	146 m <sup>2</sup>
Interior:	1,386 sq. ft.	129 m <sup>2</sup>
Outdoor:	187 sq. ft.	17 m <sup>2</sup>

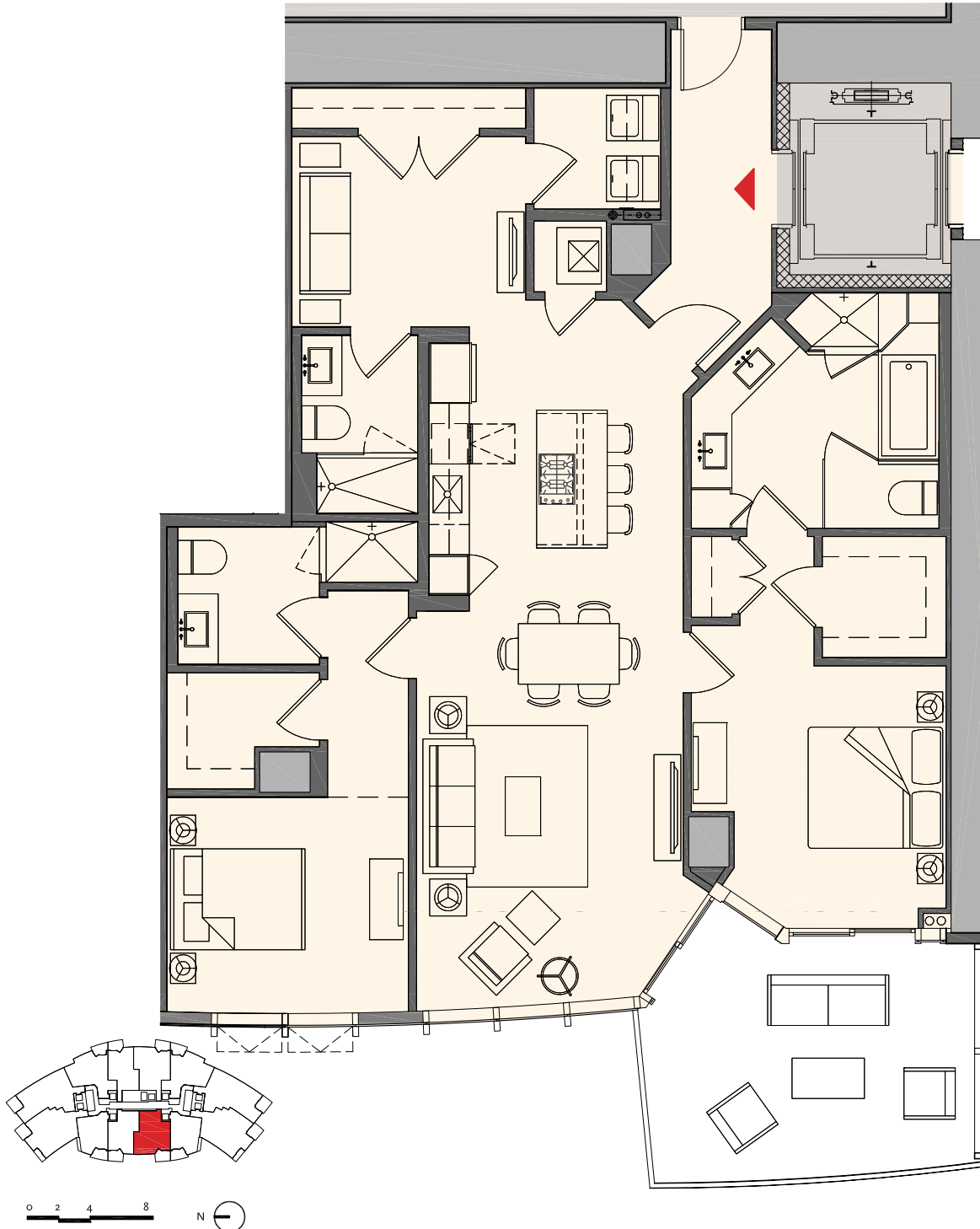


These drawings are conceptual only and are for the convenience of reference. They should not be relied upon as representations, express or implied, of the final detail of the residences. Units shown are examples of unit types and may not depict actual units. Stated square footages are ranges for a particular unit type and are measured to the exterior boundaries of the exterior walls and the centerline of interior demising walls and in fact vary from the area that would be determined by using the description and definition of the "Unit" set forth in the Declaration (which generally only includes the interior airspace between the perimeter walls and excludes interior structural components).

Residence C1

2 Bedroom + Den | 3 Bath

Total:	1,835 sq. ft.	170 m <sup>2</sup>
Interior:	1,630 sq. ft.	151 m <sup>2</sup>
Outdoor:	205 sq. ft.	19 m <sup>2</sup>



These drawings are conceptual only and are for the convenience of reference. They should not be relied upon as representations, express or implied, of the final detail of the residences. Units shown are examples of unit types and may not depict actual units. Stated square footages are ranges for a particular unit type and are measured to the exterior boundaries of the exterior walls and the centerline of interior demising walls and in fact vary from the area that would be determined by using the description and definition of the "Unit" set forth in the Declaration (which generally only includes the interior airspace between the perimeter walls and excludes interior structural components).

# PARAMOUNT

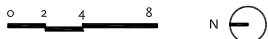
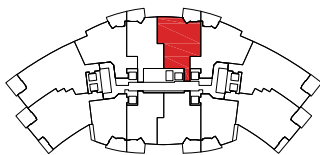
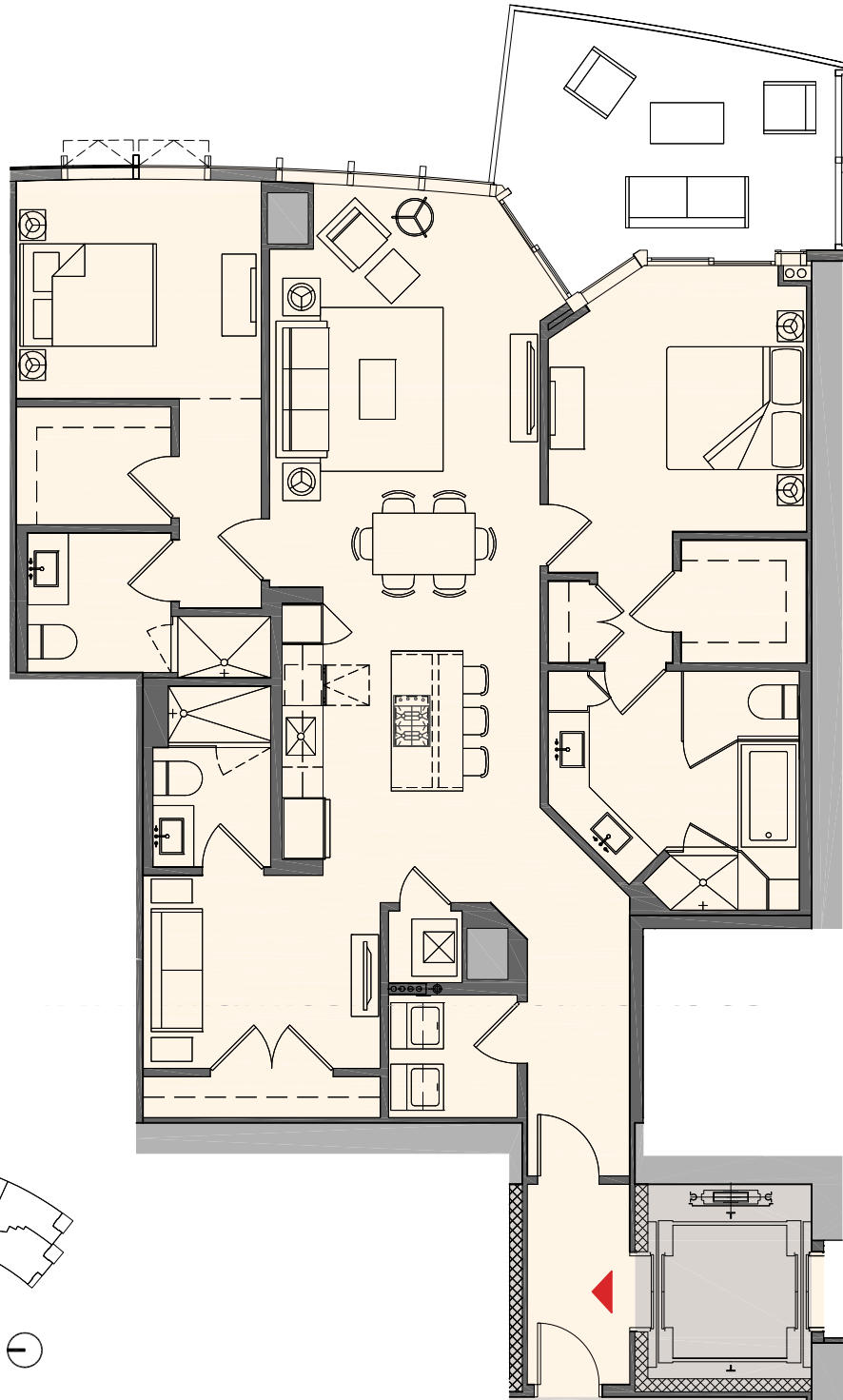
MIAMI WORLDCENTER



## Residence C2

2 Bedroom + Den | 3 Bath

Total:	1,877 sq. ft.	174 m <sup>2</sup>
Interior:	1,690 sq. ft.	157 m <sup>2</sup>
Outdoor:	187 sq. ft.	17 m <sup>2</sup>

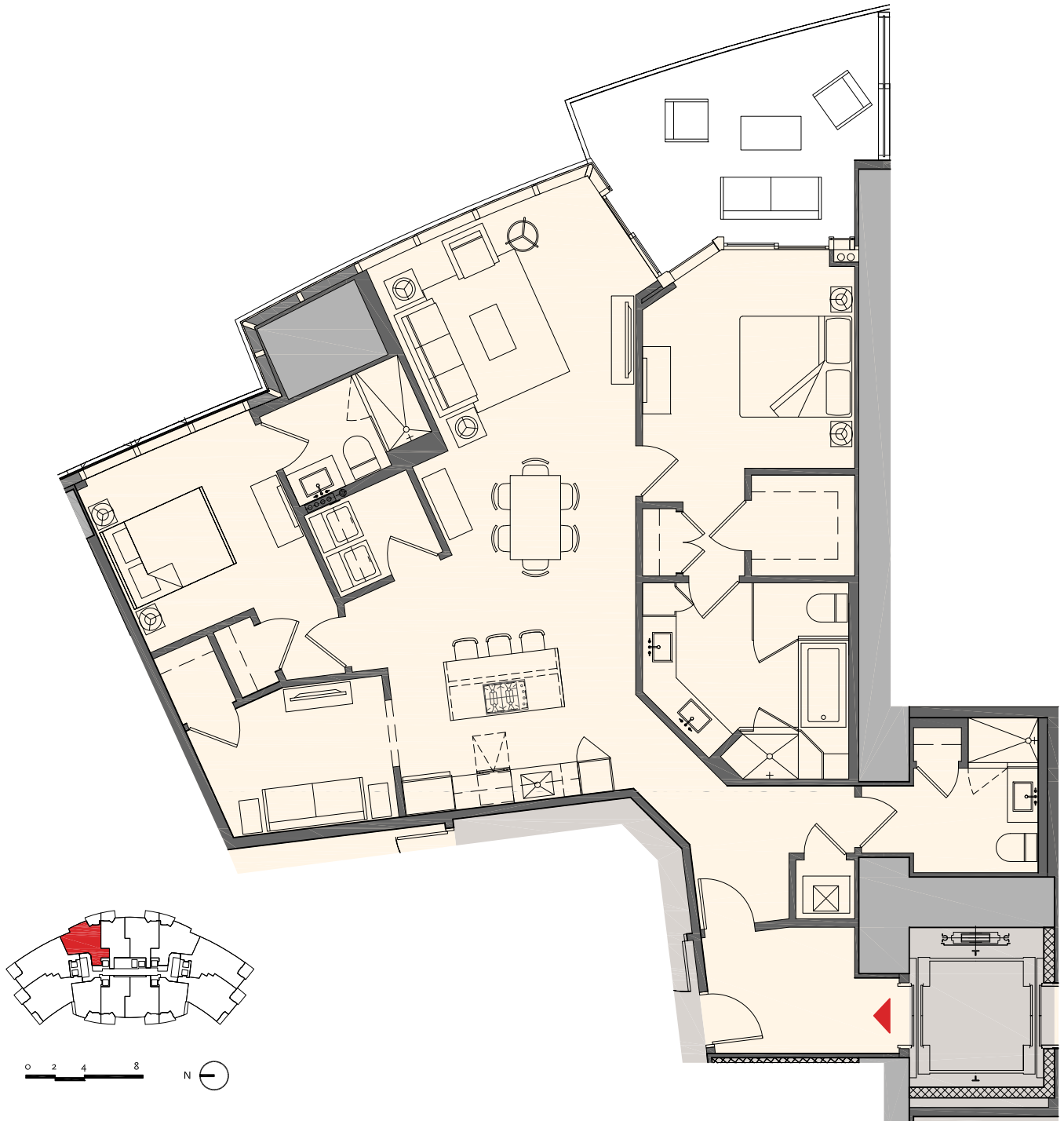


These drawings are conceptual only and are for the convenience of reference. They should not be relied upon as representations, express or implied, of the final detail of the residences. Units shown are examples of unit types and may not depict actual units. Stated square footages are ranges for a particular unit type and are measured to the exterior boundaries of the exterior walls and the centerline of interior demising walls and in fact vary from the area that would be determined by using the description and definition of the "Unit" set forth in the Declaration (which generally only includes the interior airspace between the perimeter walls and excludes interior structural components).

Residence D1

2 Bedroom + Den | 3 Bath

Total:	1,952 sq. ft.	181 m <sup>2</sup>
Interior:	1,753 sq. ft.	163 m <sup>2</sup>
Outdoor:	199 sq. ft.	18 m <sup>2</sup>

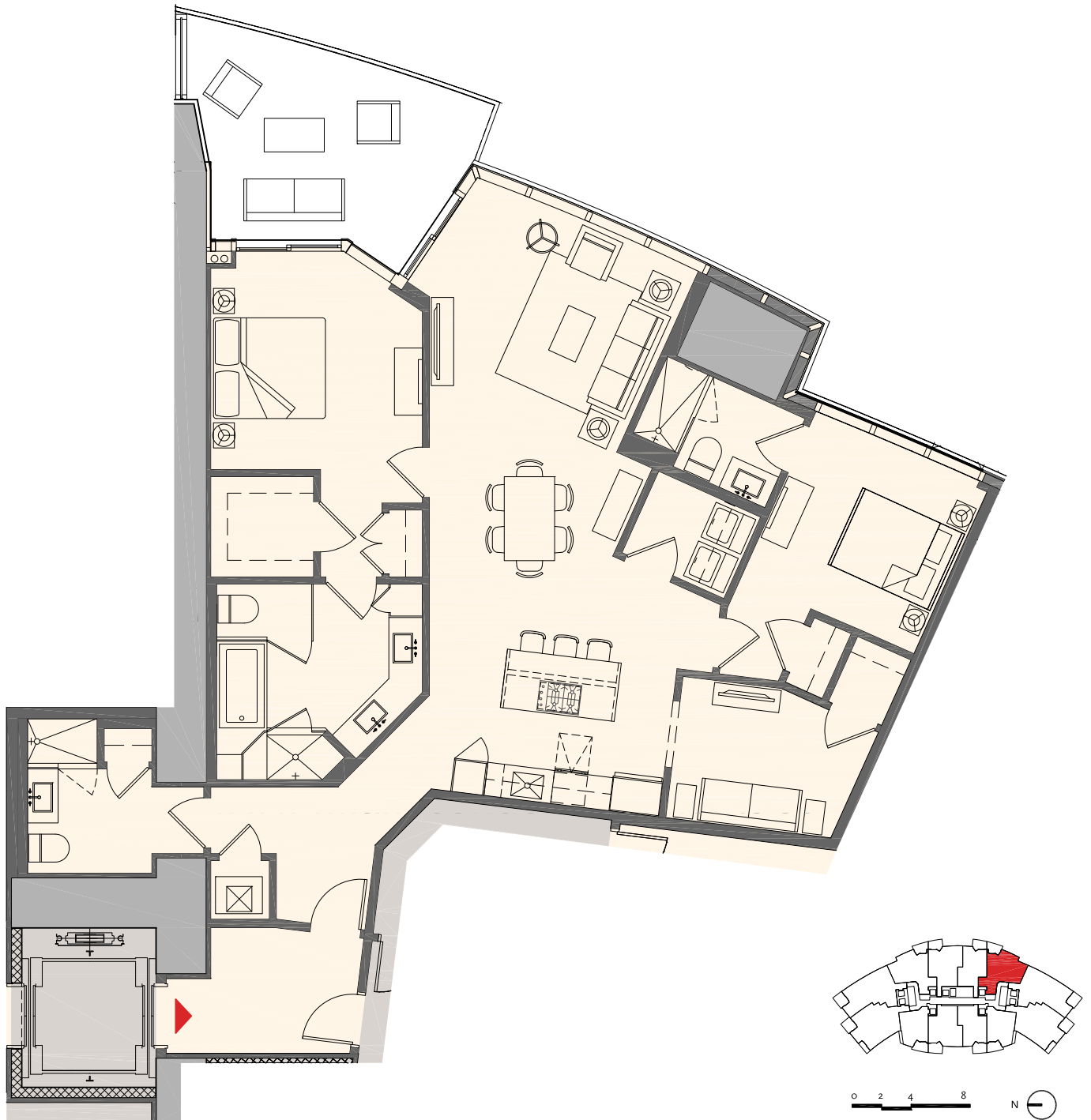


These drawings are conceptual only and are for the convenience of reference. They should not be relied upon as representations, express or implied, of the final detail of the residences. Units shown are examples of unit types and may not depict actual units. Stated square footages are ranges for a particular unit type and are measured to the exterior boundaries of the exterior walls and the centerline of interior demising walls and in fact vary from the area that would be determined by using the description and definition of the "Unit" set forth in the Declaration (which generally only includes the interior airspace between the perimeter walls and excludes interior structural components).

## Residence D2

## 2 Bedroom + Den | 3 Bath

Total:	1,952 sq. ft.	181 m <sup>2</sup>
Interior:	1,753 sq. ft.	163 m <sup>2</sup>
Outdoor:	199 sq. ft.	18 m <sup>2</sup>



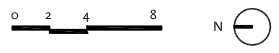
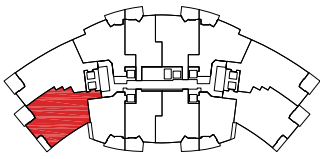
These drawings are conceptual only and are for the convenience of reference. They should not be relied upon as representations, express or implied, of the final detail of the residences. Units shown are examples of unit types and may not depict actual units. Stated square footages are ranges for a particular unit type and are measured to the exterior boundaries of the exterior walls and the centerline of interior demising walls and in fact vary from the area that would be determined by using the description and definition of the "Unit" set forth in the Declaration (which generally only includes the interior airspace between the perimeter walls and excludes interior structural components).



## Residence E1

3 Bedroom + Den | 4 Bath

Total:	2,611 sq. ft.	243 m <sup>2</sup>
Interior:	2,320 sq. ft.	216 m <sup>2</sup>
Outdoor:	291 sq. ft.	27 m <sup>2</sup>



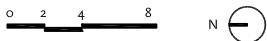
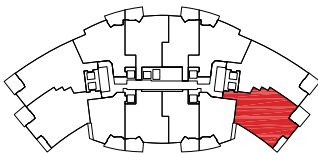
These drawings are conceptual only and are for the convenience of reference. They should not be relied upon as representations, express or implied, of the final detail of the residences. Units shown are examples of unit types and may not depict actual units. Stated square footages are ranges for a particular unit type and are measured to the exterior boundaries of the exterior walls and the centerline of interior demising walls and in fact vary from the area that would be determined by using the description and definition of the "Unit" set forth in the Declaration (which generally only includes the interior airspace between the perimeter walls and excludes interior structural components).



## Residence E2

3 Bedroom + Den | 4 Bath

Total:	2,611 sq. ft.	243 m <sup>2</sup>
Interior:	2,320 sq. ft.	216 m <sup>2</sup>
Outdoor:	291 sq. ft.	27 m <sup>2</sup>



These drawings are conceptual only and are for the convenience of reference. They should not be relied upon as representations, express or implied, of the final detail of the residences. Units shown are examples of unit types and may not depict actual units. Stated square footages are ranges for a particular unit type and are measured to the exterior boundaries of the exterior walls and the centerline of interior demising walls and in fact vary from the area that would be determined by using the description and definition of the "Unit" set forth in the Declaration (which generally only includes the interior airspace between the perimeter walls and excludes interior structural components).

# PARAMOUNT

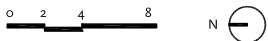
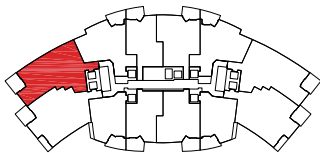
MIAMI WORLDCENTER



## Residence F1

3 Bedroom + Den | 4 Bath

Total:	2,578 sq. ft.	240 m <sup>2</sup>
Interior:	2,376 sq. ft.	221 m <sup>2</sup>
Outdoor:	202 sq. ft.	19 m <sup>2</sup>

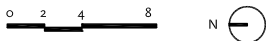
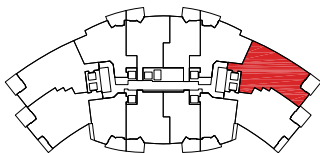


These drawings are conceptual only and are for the convenience of reference. They should not be relied upon as representations, express or implied, of the final detail of the residences. Units shown are examples of unit types and may not depict actual units. Stated square footages are ranges for a particular unit type and are measured to the exterior boundaries of the exterior walls and the centerline of interior demising walls and in fact vary from the area that would be determined by using the description and definition of the "Unit" set forth in the Declaration (which generally only includes the interior airspace between the perimeter walls and excludes interior structural components).

Residence F2

3 Bedroom + Den | 4 Bath

Total:	2,578 sq. ft.	240 m <sup>2</sup>
Interior:	2,376 sq. ft.	221 m <sup>2</sup>
Outdoor:	202 sq. ft.	19 m <sup>2</sup>



These drawings are conceptual only and are for the convenience of reference. They should not be relied upon as representations, express or implied, of the final detail of the residences. Units shown are examples of unit types and may not depict actual units. Stated square footages are ranges for a particular unit type and are measured to the exterior boundaries of the exterior walls and the centerline of interior demising walls and in fact vary from the area that would be determined by using the description and definition of the "Unit" set forth in the Declaration (which generally only includes the interior airspace between the perimeter walls and excludes interior structural components).

# PARAMOUNT

MIAMI WORLDCENTER



700 Feet

470 Residences

Residences: Levels 10-54

Typical Floorplate | Level 11-45

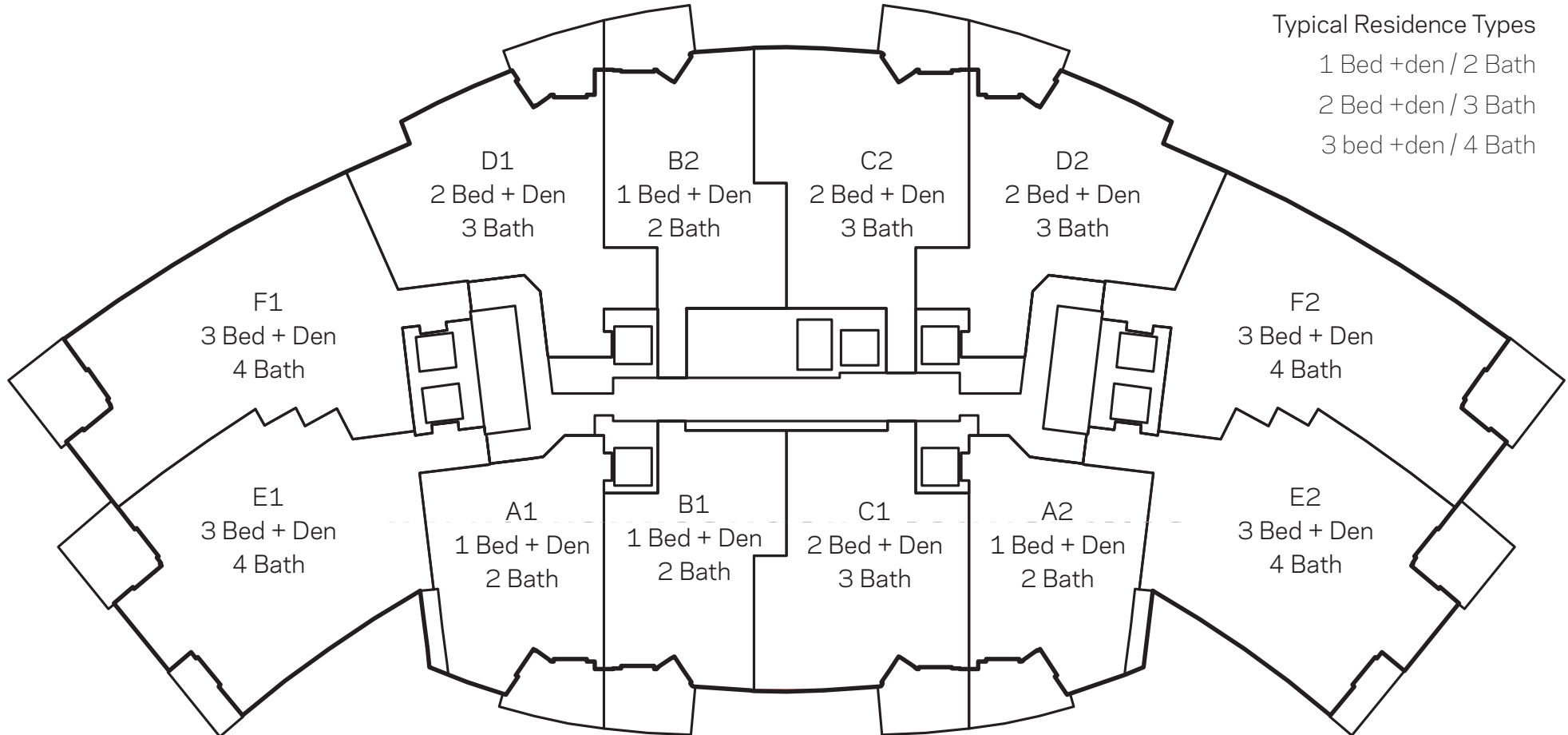
12 Residences per Floor

Typical Residence Types

1 Bed + den / 2 Bath

2 Bed + den / 3 Bath

3 bed + den / 4 Bath



These drawings are conceptual only and are for the convenience of reference. They should not be relied upon as representations, express or implied, of the final detail of the Residences. Units shown are examples of unit types and may not depict actual units. Stated square footages are ranges for a particular unit type and are measured to the exterior boundaries of the exterior walls and the centerline of interior demising walls and in fact vary from the area that would be determined by using the description and definition of the "Unit" set forth in the Declaration (which generally only includes the interior airspace between the perimeter walls and excludes interior structural components).