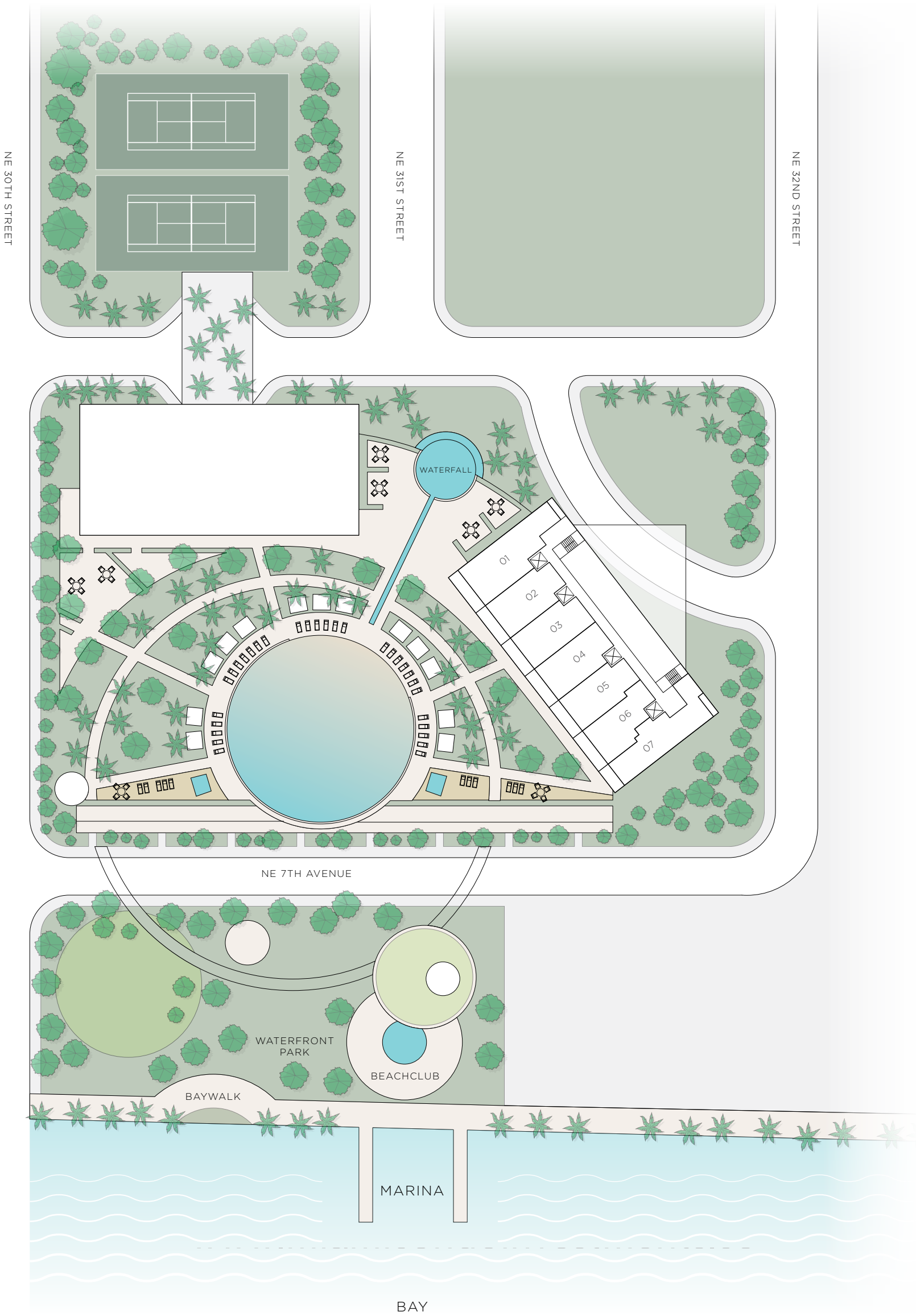


PARAISO BAY

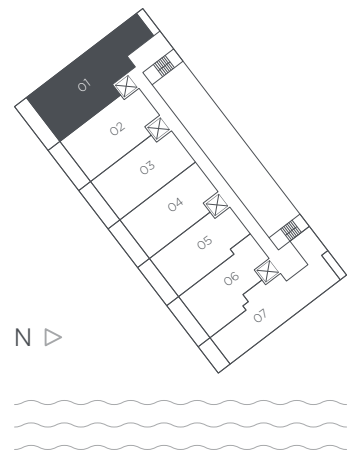
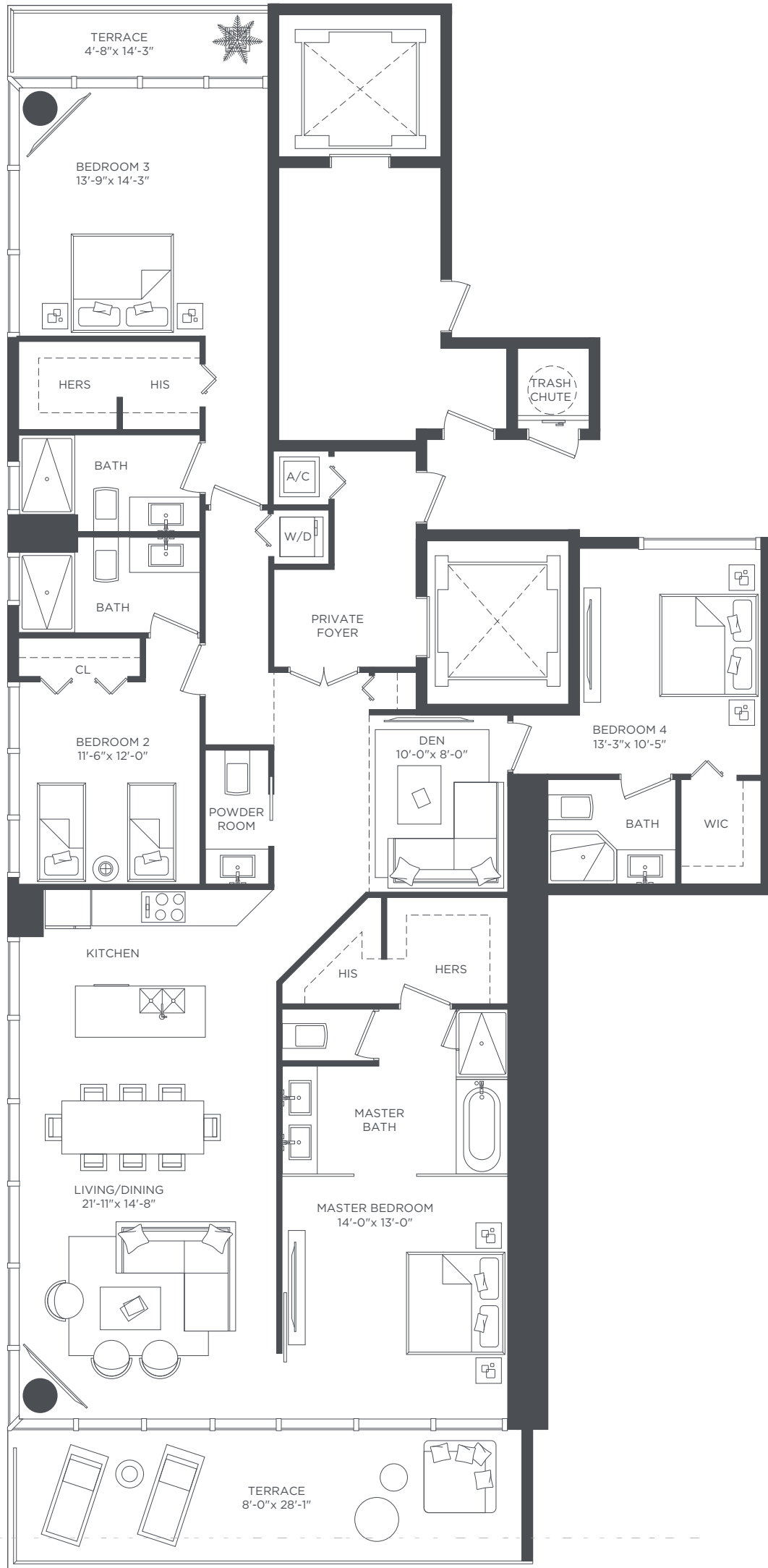
RESIDENCES FLOORPLANS



SITE PLAN



Stated dimensions are measured to the exterior boundaries of the exterior walls and the centerline of interior demising walls and in fact vary from the dimensions that would be determined by using the description and definition of the "Unit" set forth in the Declaration (which generally only includes the interior airspace between the perimeter walls and excludes interior structural components). For your reference, the area of the Unit, determined in accordance with those defined unit boundaries, is + or - 1,998 sq. ft. for units O1, is + or - 1,752 sq. ft. for units O1 Mod, is + or - 959 sq. ft. for units O2, is + or - 1,195 sq. ft. for units O2 Mod, is + or - 1,210 sq. ft. for units O3, is + or - 1,197 sq. ft. for units O4, is + or - 1,180 sq. ft. for units O5, is + or - 1,110 sq. ft. for units O6, is + or - 1,687 sq. ft. for units O7. Note that measurements of rooms set forth on this floor plan are generally taken at the greatest points of each given room (as if the room were a perfect rectangle), without regard for any cutouts. Accordingly, the area of the actual room will typically be smaller than the product obtained by multiplying the stated length times width. All dimensions are approximate and may vary with actual construction, and all floor plans and development plans are subject to change.

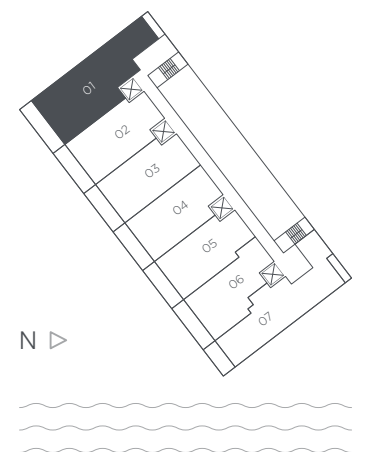
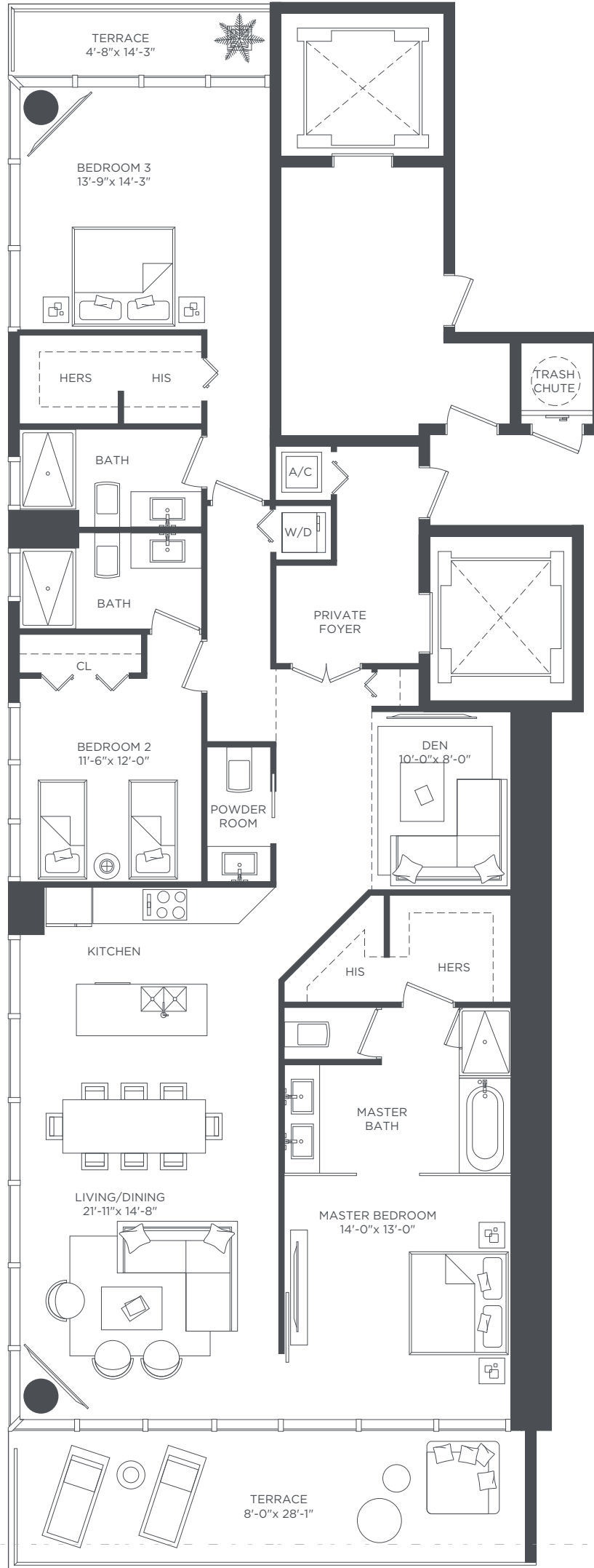


RESIDENCE 01
 LEVELS 28TH TO 50TH
 4 BEDROOMS 4 1/2 BATHS + DEN

A/C INTERIOR AREA	2,141 SQ.FT.	198.90 SQ.M.
TERRACE AREA	296 SQ.FT.	27.49 SQ.M.
TOTAL RESIDENCE	2,437 SQ.FT.	226.39 SQ.M.



Stated dimensions are measured to the exterior boundaries of the exterior walls and the centerline of interior demising walls and in fact vary from the dimensions that would be determined by using the description and definition of the "Unit" set forth in the Declaration (which generally only includes the interior airspace between the perimeter walls and excludes interior structural components). For your reference, the area of the Unit, determined in accordance with those defined unit boundaries, is + or - 1,998 sq. ft. for units 01 Note that measurements of rooms set forth on this floor plan are generally taken at the greatest points of each given room (as if the room were a perfect rectangle), without regard for any cutouts. Accordingly, the area of the actual room will typically be smaller than the product obtained by multiplying the stated length times width. All dimensions are approximate and may vary with actual construction, and all floor plans and development plans are subject to change.

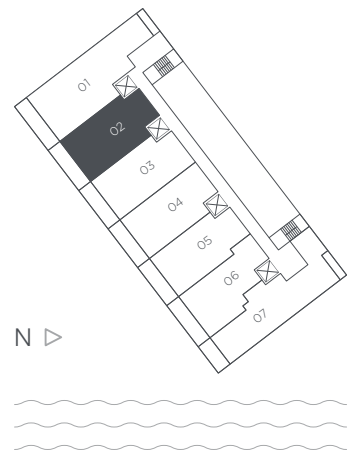
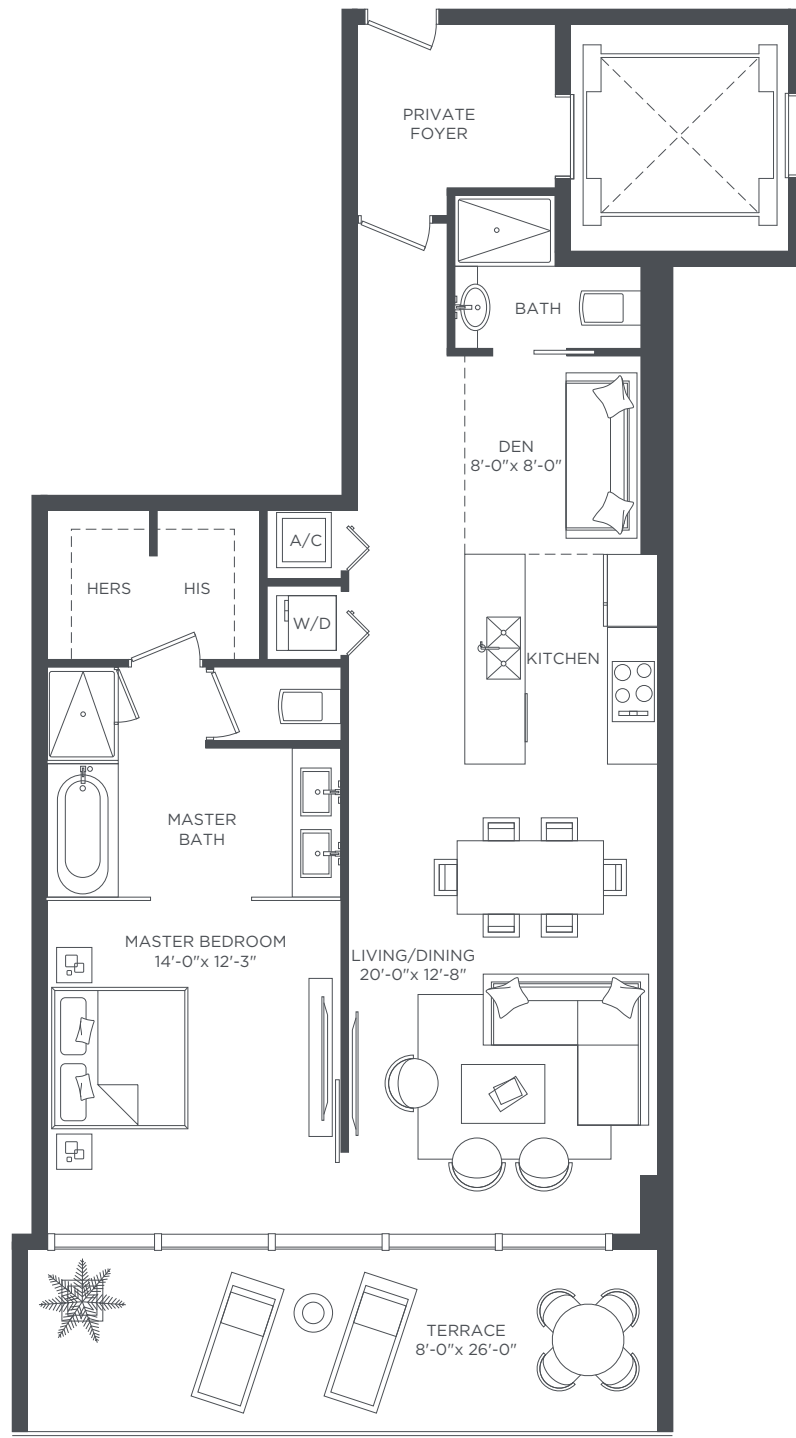


RESIDENCE 01 MOD
 LEVELS 4TH TO 27TH
 3 BEDROOMS 3 1/2 BATHS + DEN

A/C INTERIOR AREA	1,885 SQ.FT.	175.12 SQ.M.
TERRACE AREA	296 SQ.FT.	27.49 SQ.M.
TOTAL RESIDENCE	2,181 SQ.FT.	202.61 SQ.M.



Stated dimensions are measured to the exterior boundaries of the exterior walls and the centerline of interior demising walls and in fact vary from the dimensions that would be determined by using the description and definition of the "Unit" set forth in the Declaration (which generally only includes the interior airspace between the perimeter walls and excludes interior structural components). For your reference, the area of the Unit, determined in accordance with those defined unit boundaries, is + or - 1,752 sq. ft. for units 01 Mod Note that measurements of rooms set forth on this floor plan are generally taken at the greatest points of each given room (as if the room were a perfect rectangle), without regard for any cutouts. Accordingly, the area of the actual room will typically be smaller than the product obtained by multiplying the stated length times width. All dimensions are approximate and may vary with actual construction, and all floor plans and development plans are subject to change.

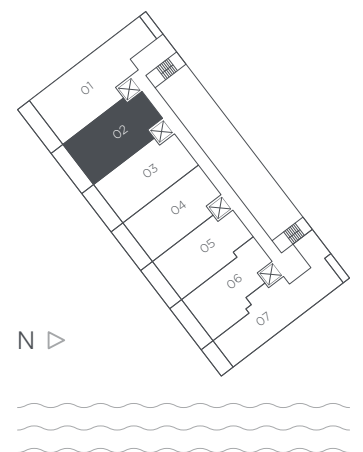
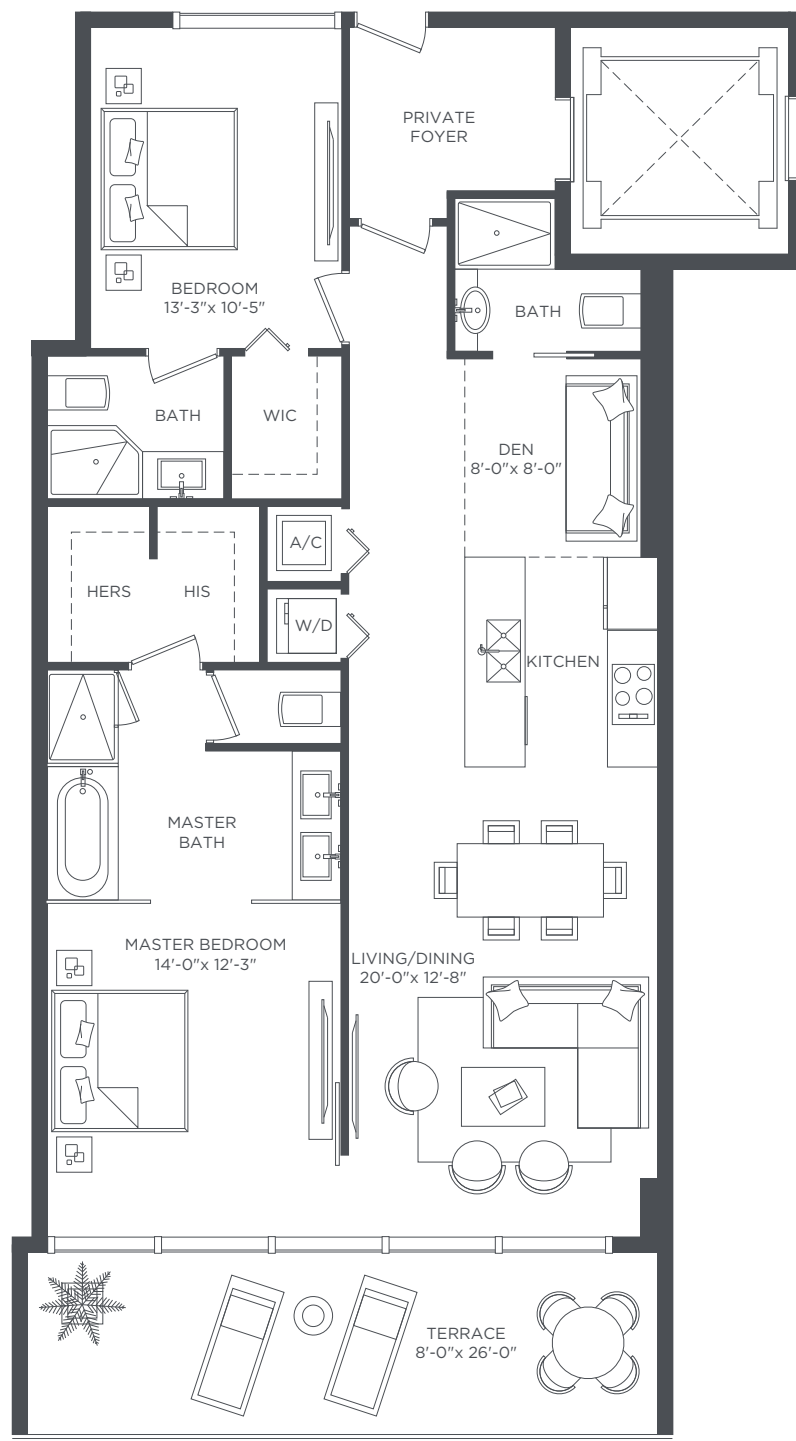


RESIDENCE 02
 LEVELS 28TH TO 50TH
 1 BEDROOM 2 BATHS + DEN

A/C INTERIOR AREA	1,055 SQ.FT.	98.01 SQ.M.
TERRACE AREA	215 SQ.FT.	19.97 SQ.M.
TOTAL RESIDENCE	1,270 SQ.FT.	117.98 SQ.M.



Stated dimensions are measured to the exterior boundaries of the exterior walls and the centerline of interior demising walls and in fact vary from the dimensions that would be determined by using the description and definition of the "Unit" set forth in the Declaration (which generally only includes the interior airspace between the perimeter walls and excludes interior structural components). For your reference, the area of the Unit, determined in accordance with those defined unit boundaries, is + or - 959 sq. ft. for units 02. Note that measurements of rooms set forth on this floor plan are generally taken at the greatest points of each given room (as if the room were a perfect rectangle), without regard for any cutouts. Accordingly, the area of the actual room will typically be smaller than the product obtained by multiplying the stated length times width. All dimensions are approximate and may vary with actual construction, and all floor plans and development plans are subject to change.

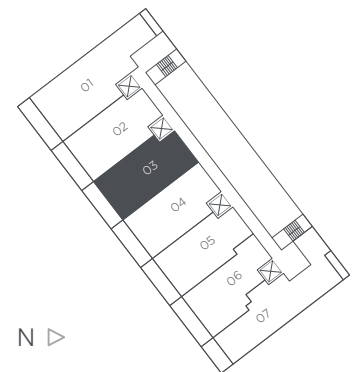
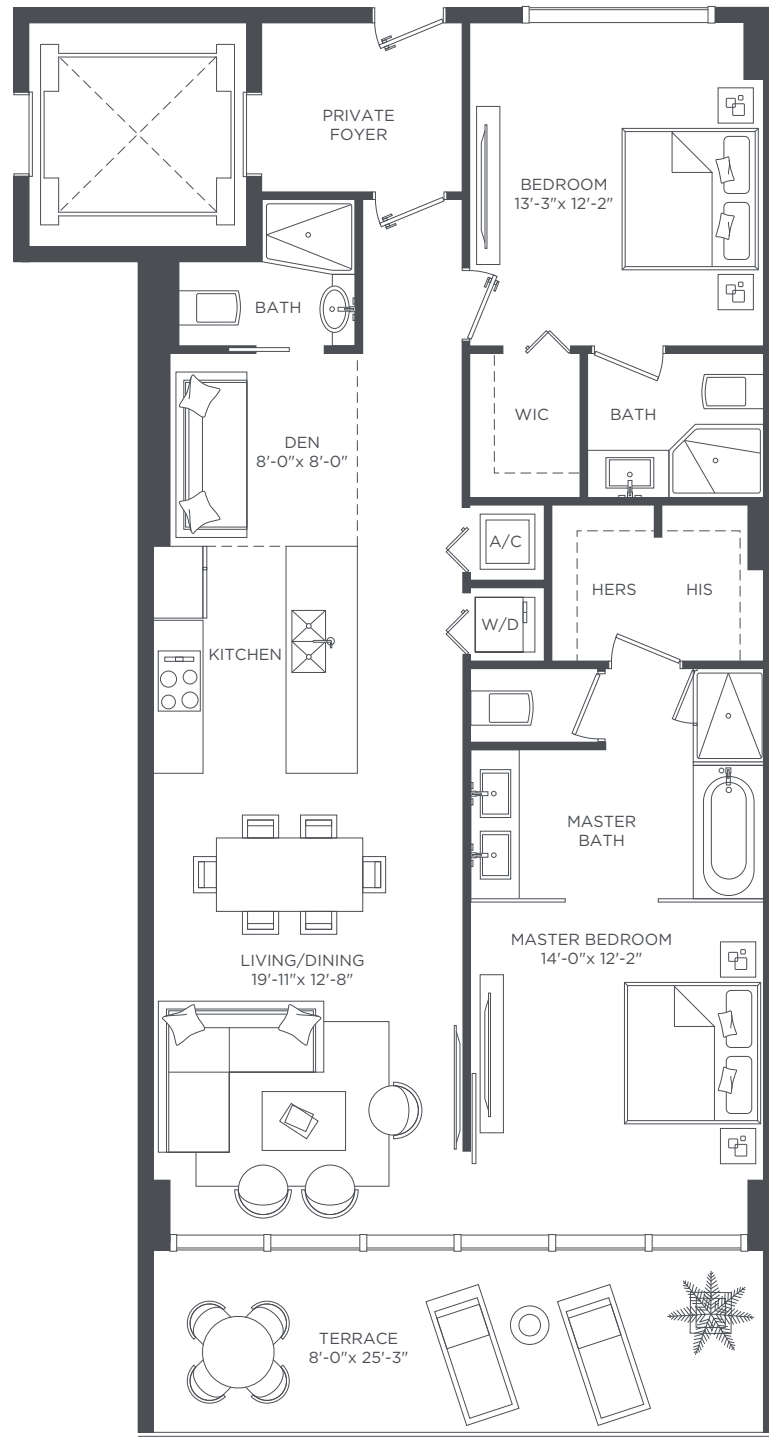


RESIDENCE 02 MOD
 LEVELS 4TH TO 27TH
 2 BEDROOMS 3 BATHS + DEN

A/C INTERIOR AREA	1,311 SQ.FT.	121.79 SQ.M.
TERRACE AREA	215 SQ.FT.	19.97 SQ.M.
TOTAL RESIDENCE	1,526 SQ.FT.	141.76 SQ.M.



Stated dimensions are measured to the exterior boundaries of the exterior walls and the centerline of interior demising walls and in fact vary from the dimensions that would be determined by using the description and definition of the "Unit" set forth in the Declaration (which generally only includes the interior airspace between the perimeter walls and excludes interior structural components). For your reference, the area of the Unit, determined in accordance with those defined unit boundaries, is + or - 1,195 sq. ft. for units 02 Mod Note that measurements of rooms set forth on this floor plan are generally taken at the greatest points of each given room (as if the room were a perfect rectangle), without regard for any cutouts. Accordingly, the area of the actual room will typically be smaller than the product obtained by multiplying the stated length times width. All dimensions are approximate and may vary with actual construction, and all floor plans and development plans are subject to change.



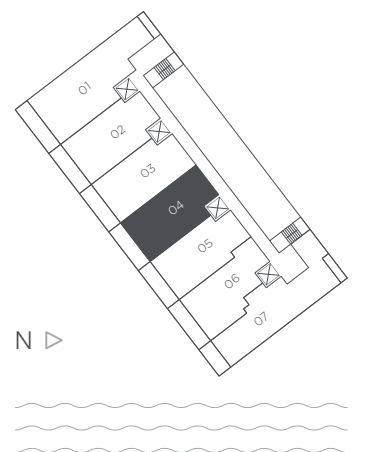
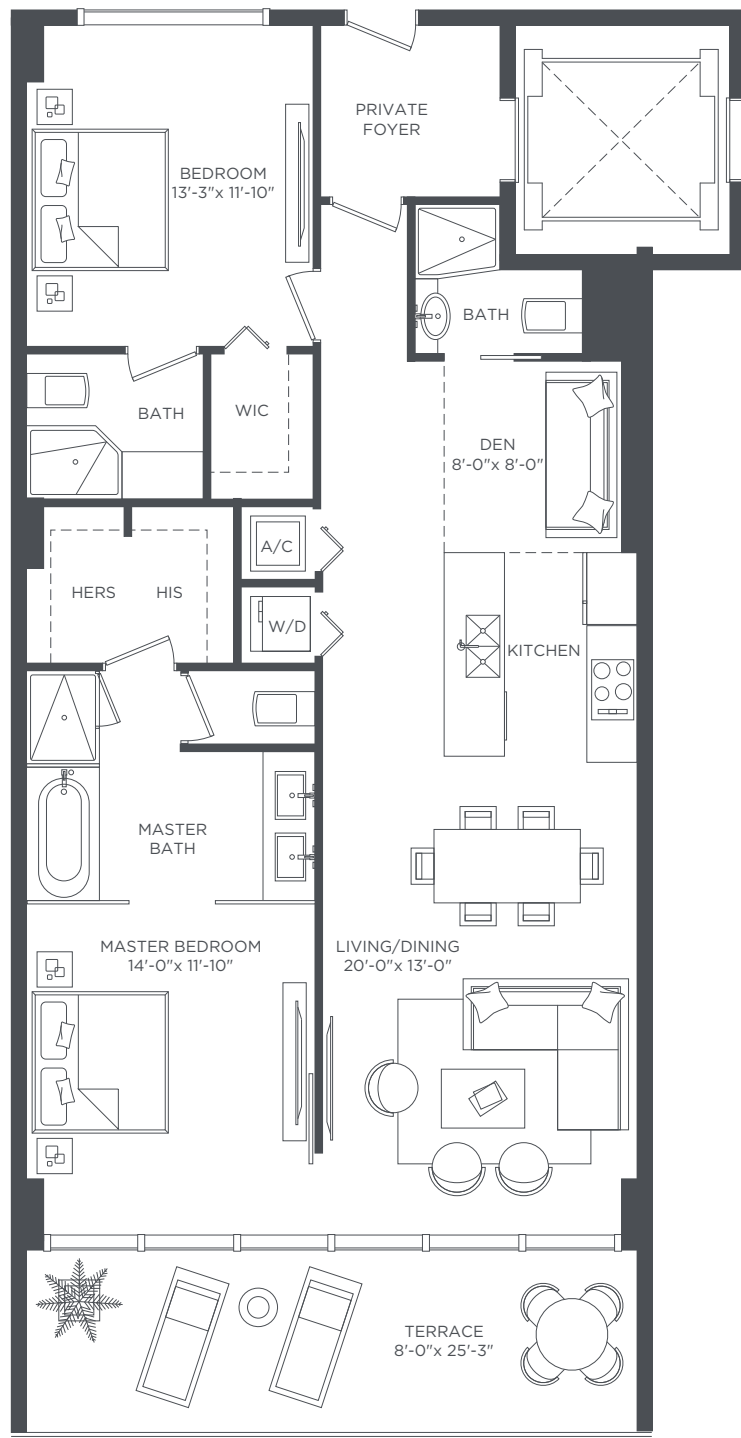
RESIDENCE 03

2 BEDROOMS 3 BATHS + DEN

A/C INTERIOR AREA	1,286 SQ.FT.	119.47 SQ.M.
TERRACE AREA	209 SQ.FT.	19.41 SQ.M.
TOTAL RESIDENCE	1,495 SQ.FT.	138.88 SQ.M.



Stated dimensions are measured to the exterior boundaries of the exterior walls and the centerline of interior demising walls and in fact vary from the dimensions that would be determined by using the description and definition of the "Unit" set forth in the Declaration (which generally only includes the interior airspace between the perimeter walls and excludes interior structural components). For your reference, the area of the Unit, determined in accordance with those defined unit boundaries, is + or - 1,210 sq. ft. for units 03 Note that measurements of rooms set forth on this floor plan are generally taken at the greatest points of each given room (as if the room were a perfect rectangle), without regard for any cutouts. Accordingly, the area of the actual room will typically be smaller than the product obtained by multiplying the stated length times width. All dimensions are approximate and may vary with actual construction, and all floor plans and development plans are subject to change.



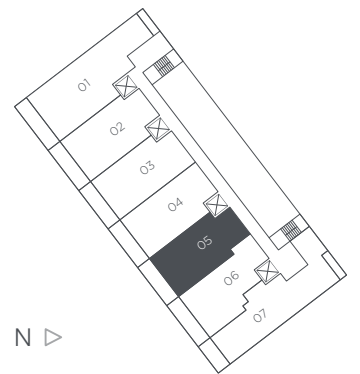
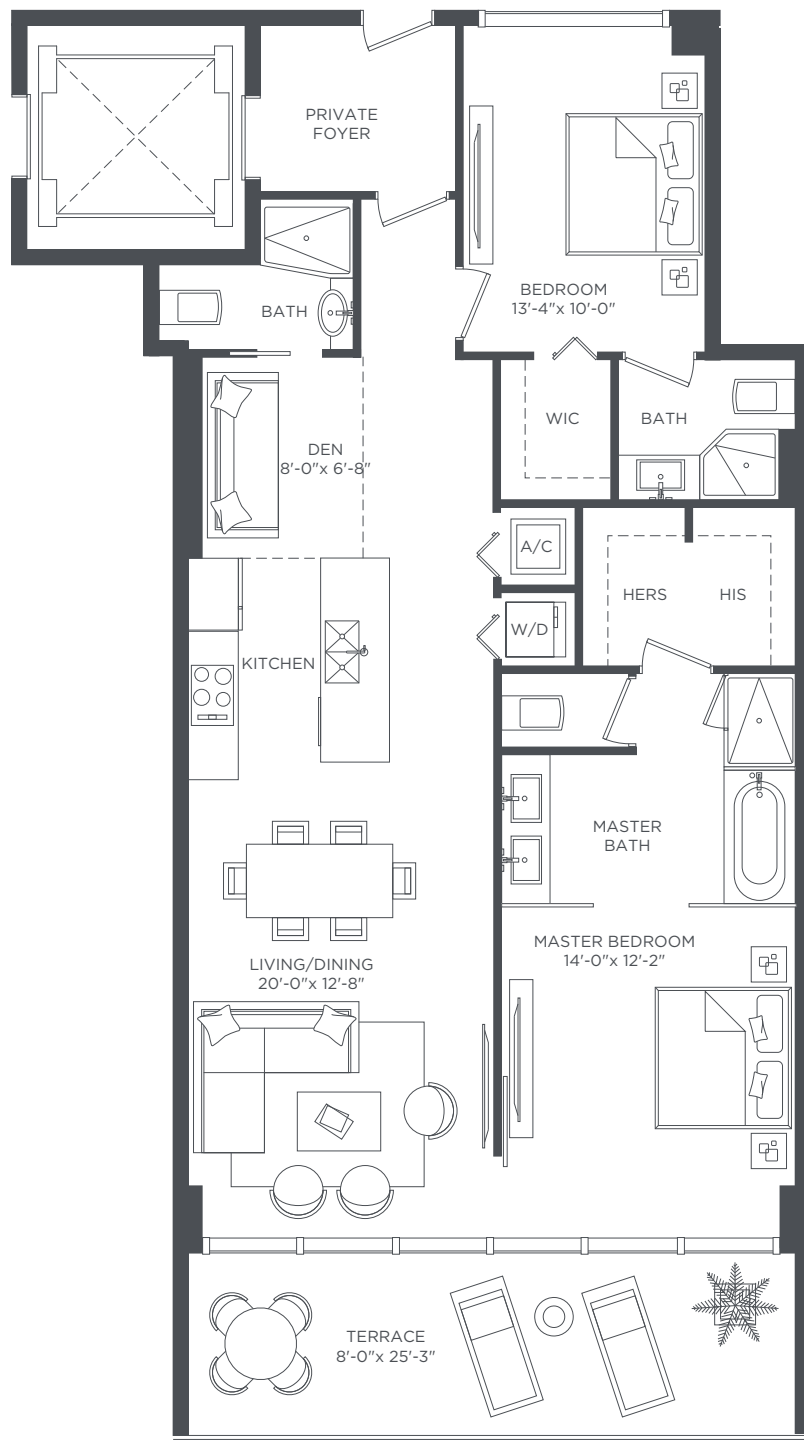
RESIDENCE 04

2 BEDROOMS 3 BATHS + DEN

A/C INTERIOR AREA	1,272 SQ.FT.	118.17 SQ.M.
TERRACE AREA	209 SQ.FT.	19.41 SQ.M.
TOTAL RESIDENCE	1,495 SQ.FT.	137.58 SQ.M.



Stated dimensions are measured to the exterior boundaries of the exterior walls and the centerline of interior demising walls and in fact vary from the dimensions that would be determined by using the description and definition of the "Unit" set forth in the Declaration (which generally only includes the interior airspace between the perimeter walls and excludes interior structural components). For your reference, the area of the Unit, determined in accordance with those defined unit boundaries, is + or - 1,197 sq. ft. for units 04. Note that measurements of rooms set forth on this floor plan are generally taken at the greatest points of each given room (as if the room were a perfect rectangle), without regard for any cutouts. Accordingly, the area of the actual room will typically be smaller than the product obtained by multiplying the stated length times width. All dimensions are approximate and may vary with actual construction, and all floor plans and development plans are subject to change.



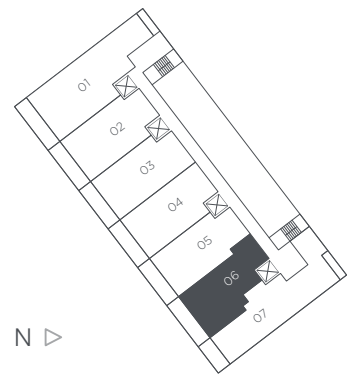
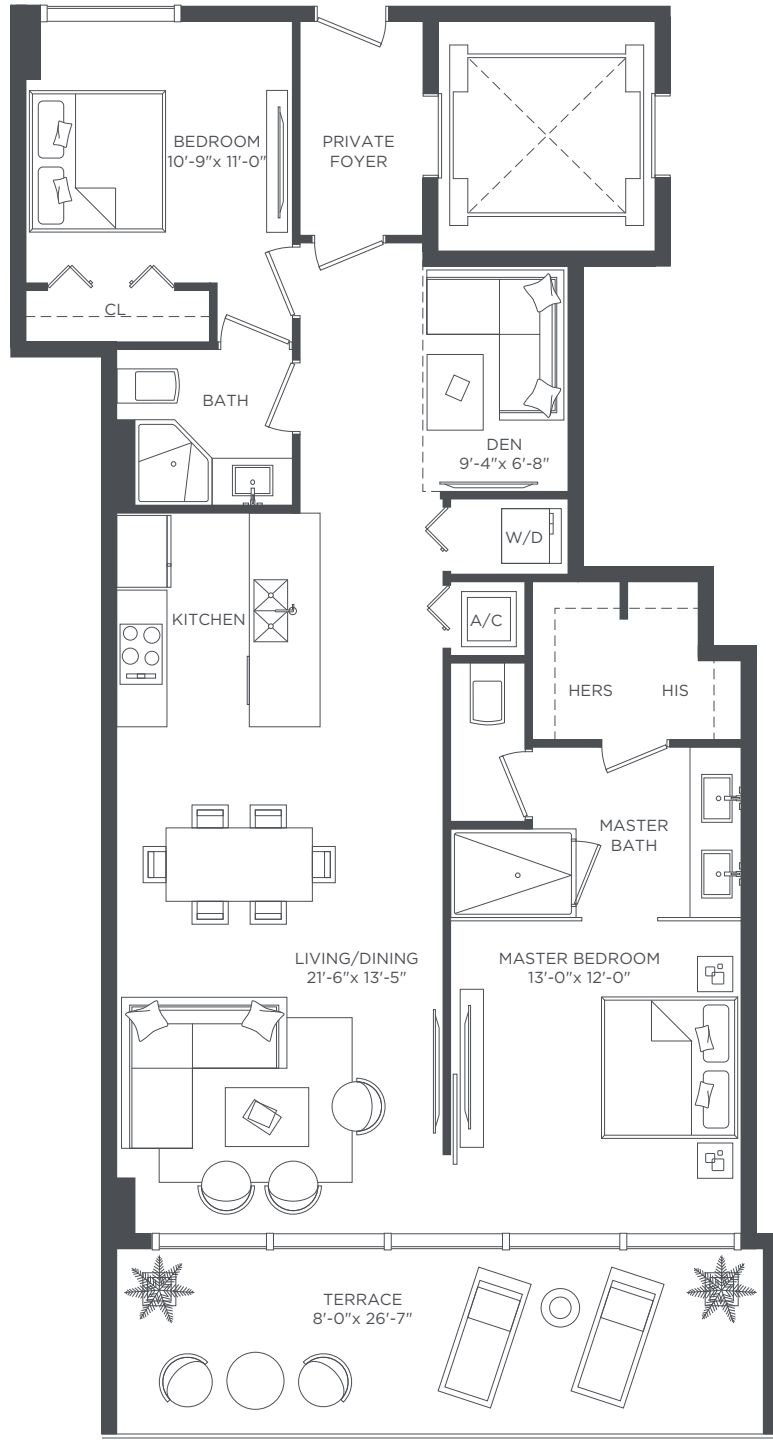
RESIDENCE 05

2 BEDROOMS 3 BATHS + DEN

A/C INTERIOR AREA	1,256 SQ.FT.	116.68 SQ.M.
TERRACE AREA	209 SQ.FT.	19.41 SQ.M.
TOTAL RESIDENCE	1,465 SQ.FT.	136.09 SQ.M.



Stated dimensions are measured to the exterior boundaries of the exterior walls and the centerline of interior demising walls and in fact vary from the dimensions that would be determined by using the description and definition of the "Unit" set forth in the Declaration (which generally only includes the interior airspace between the perimeter walls and excludes interior structural components). For your reference, the area of the Unit, determined in accordance with those defined unit boundaries, is + or - 1,180 sq. ft. for units 05. Note that measurements of rooms set forth on this floor plan are generally taken at the greatest points of each given room (as if the room were a perfect rectangle), without regard for any cutouts. Accordingly, the area of the actual room will typically be smaller than the product obtained by multiplying the stated length times width. All dimensions are approximate and may vary with actual construction, and all floor plans and development plans are subject to change.



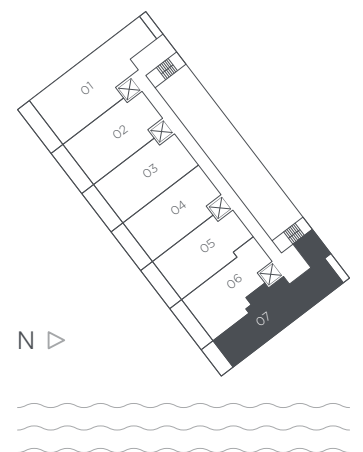
RESIDENCE 06

2 BEDROOMS 2 BATHS + DEN

A/C INTERIOR AREA	1,206 SQ.FT.	112.04 SQ.M.
TERRACE AREA	212 SQ.FT.	19.69 SQ.M.
TOTAL RESIDENCE	1,418 SQ.FT.	131.73 SQ.M.



Stated dimensions are measured to the exterior boundaries of the exterior walls and the centerline of interior demising walls and in fact vary from the dimensions that would be determined by using the description and definition of the "Unit" set forth in the Declaration (which generally only includes the interior airspace between the perimeter walls and excludes interior structural components). For your reference, the area of the Unit, determined in accordance with those defined unit boundaries, is + or - 1,110 sq. ft. for units 06. Note that measurements of rooms set forth on this floor plan are generally taken at the greatest points of each given room (as if the room were a perfect rectangle), without regard for any cutouts. Accordingly, the area of the actual room will typically be smaller than the product obtained by multiplying the stated length times width. All dimensions are approximate and may vary with actual construction, and all floor plans and development plans are subject to change.



RESIDENCE 07

3 BEDROOMS 3 BATHS + DEN

A/C INTERIOR AREA
TERRACE AREA
TOTAL RESIDENCE

1,702 SQ.FT.
207 SQ.FT.
1,909 SQ.FT.

158.12 SQ.M.
19.23 SQ.M.
177.35 SQ.M.



Stated dimensions are measured to the exterior boundaries of the exterior walls and the centerline of interior demising walls and in fact vary from the dimensions that would be determined by using the description and definition of the "Unit" set forth in the Declaration (which generally only includes the interior airspace between the perimeter walls and excludes interior structural components). For your reference, the area of the Unit, determined in accordance with those defined unit boundaries, is + or - 1,687 sq. ft. for units 07. Note that measurements of rooms set forth on this floor plan are generally taken at the greatest points of each given room (as if the room were a perfect rectangle), without regard for any cutouts. Accordingly, the area of the actual room will typically be smaller than the product obtained by multiplying the stated length times width. All dimensions are approximate and may vary with actual construction, and all floor plans and development plans are subject to change.